



PRIMEGRIP

SIDING

PRODUCT GUIDE 2026



PRIMEGRIP | SIDING TOOLS

WHY PROFESSIONALS ARM THEMSELVES WITH PRIMEGRIP:

We know the job site is a proving ground. That's why we've engineered this lineup with one single mission in mind: to eliminate the daily frustrations of exterior work and give you the tactical advantage. From innovative, one-man adjustable facing gauges that guarantee perfect reveals, to rock-solid staging and ladder safety hardware, every product in this brochure is designed to boost your daily square footage while reducing physical strain.

UNMATCHED PRECISION: Achieve flawless, uniform installations course after course, eliminating the constant guesswork and rework.

SOLO-EFFICIENCY: We design tools that act as your second set of hands, transforming cumbersome two-man tasks into fast, profitable one-man operations.

JOBSITE DURABILITY: Fabricated from rugged, contractor-grade materials built to survive drops, extreme weather, and the daily abuse of the modern job site. Because when you're in the trenches, your tools shouldn't be the weak link.

Don't just cover the exterior. Command it.

BUILT BATTLE STRONG.™

DOUBLE-LAYERED HAND SEAMERS

Professional series hand seamers with comfortable double-layered non-slip handles and long lasting heat-treated steel jaws.



03-536



03-540



03-547

- Useful for thicker gauge material.
- No springs so seamer jaw does not lose strength.
- High quality drop-forged steel.
- Fully heat-treated and tempered.
- Double layered and non-slip handles.



PART #	PRODUCT NAME	INNER QTY	MASTER QTY
03-536	1"x3" DOUBLE-LAYERED HAND SEAMER	2	36
03-539	1"x6" DOUBLE-LAYERED HAND SEAMER	2	24
03-540	1"x9" DOUBLE-LAYERED HAND SEAMER	2	16
03-541	1"x12" DOUBLE-LAYERED HAND SEAMER	2	12
03-546	2"x6" DOUBLE-LAYERED HAND SEAMER	2	12
03-547	3"x6" DOUBLE-LAYERED HAND SEAMER	2	12
03-549	2"x3" DOUBLE-LAYERED HAND SEAMER	2	24
03-511	4"x6" DOUBLE-LAYERED HAND SEAMER	2	12
03-512	4"x9" DOUBLE-LAYERED HAND SEAMER	2	8

**03-535
3" HAND SEAMER**



- 1" bend depth.
- Useful for thicker gauge material.
- High quality drop-forged steel.

**INNER QTY: 2
MASTER QTY: 36**

03-537

3" CHROME HAND SEAMER



- 1" bend depth.
- Useful for thicker gauge material.
- High quality drop-forged steel.
- Double layered and non-slip handles.
- ¼" graduation markings for easy reference.

INNER QTY: 2
MASTER QTY: 36

DOUBLE-LAYERED ANGLED SEAMERS

Professional series hand seamers with comfortable double-layered non-slip handles and long lasting heat-treated steel jaws.



03-528



03-529

- Useful for thicker gauge material.
- No springs so seamer jaw does not lose strength.
- High quality drop-forged steel.
- Fully heat-treated and tempered.
- Double layered and non-slip handles.

PART #	PRODUCT NAME	INNER QTY	MASTER QTY
03-528	1"x3" DOUBLE-LAYERED HAND SEAMER—45°	2	36
03-529	1"x3" DOUBLE-LAYERED HAND SEAMER—90°	2	36
03-530	1"x6" DOUBLE-LAYERED HAND SEAMER—45°	2	24
03-531	1"x6" DOUBLE-LAYERED HAND SEAMER—90°	2	24

03-542
180° CLINCHER



- High quality, heavy duty forged construction.
- Precoated handles.
- Manufactured to precise standards.

MASTER QTY: 24

03-543
45° CLINCHER



- High quality, heavy duty forged construction.
- Precoated handles.
- Manufactured to precise standards.
- Provides more leverage than a straight pair of tongs.

MASTER QTY: 24

03-544
90° CLINCHER



- High quality, heavy duty forged construction.
- Precoated handles.
- Manufactured to precise standards.
- Useful for hard to reach bends.

MASTER QTY: 24

03-513**3/4" STRAIGHT SEAMER**

Engineered for the demands of the modern job site, the Primegrip 3/4" seamers are your ultimate detail tools.

- Ultra-compact 18 mm (3/4") jaw width.
- Specialized 65 mm (2.5") insertion depth.
- Constructed from premium drop-forged steel.
- Signature Primegrip comfort-grip handles.
- Ideal for custom drip edges, step flashing, valley details, bending aluminum or steel fascia and window capping, finishing on ductwork and tight-corner metal fabrication.

MASTER QTY: 24

03-514**3/4" BENT SEAMER**

Engineered for the demands of the modern job site, the Primegrip 3/4" seamers are your ultimate detail tools.

- Ultra-compact 20 mm (3/4") jaw width.
- Specialized 55 mm (2") insertion depth.
- Constructed from premium drop-forged steel.
- Signature Primegrip comfort-grip handles.
- Ideal for custom drip edges, step flashing, valley details, bending aluminum or steel fascia and window capping, finishing on ductwork and tight-corner metal fabrication.

MASTER QTY: 24

03-515**3" TRU45 STRAIGHT SEAMER**

Primegrip TRU45 seamers are designed for for precise bending at 45-degree angles.

- 3" (80 mm) jaw for even pressure distribution.
- 62 mm insertion depth.
- Constructed from premium drop-forged steel.
- Signature Primegrip comfort-grip handles.
- Ideal for custom flashing, drip edges, complex valley details, metal fabrication, consistent edge bending, and flawless forming for aluminum or steel fascia, siding, and window capping.

MASTER QTY: 24



03-516**3" TRU45 90-DEGREE SEAMER**

Primegrip TRU45 seamers are designed for for precise bending at 45-degree angles.

- 3" (80 mm) jaw for even pressure distribution.
- 65 mm insertion depth.
- 90-degree offset jaw for improved leverage.
- Constructed from premium drop-forged steel.
- Signature Primegrip comfort-grip handles.
- Ideal for custom flashing, drip edges, complex valley details, metal fabrication, consistent edge bending, and flawless forming for aluminum or steel fascia, siding, and window capping.

MASTER QTY: 24

03-517**3" TRU45 45-DEGREE SEAMER**

Primegrip TRU45 seamers are designed for for precise bending at 45-degree angles.

- 3" (80 mm) jaw for even pressure distribution.
- 65 mm insertion depth.
- 45-degree offset jaw for improved leverage.
- Constructed from premium drop-forged steel.
- Signature Primegrip comfort-grip handles.
- Ideal for custom flashing, drip edges, complex valley details, metal fabrication, consistent edge bending, and flawless forming for aluminum or steel fascia, siding, and window capping.

MASTER QTY: 24

03-518**TRU45 ONE-SIDED SEAMER**

This specialized one-sided model is perfect for bending in tight or restricted areas

- 2.36" (60 mm) one-sided jaw.
- 62 mm insertion depth.
- 45-degree one-sided offset jaw for improved leverage.
- Constructed from premium drop-forged steel.
- Signature Primegrip comfort-grip handles.
- Ideal for roofing, flashing, and sheet metal applications where access is limited.

MASTER QTY: 24

03-519
CORNER FOLDER

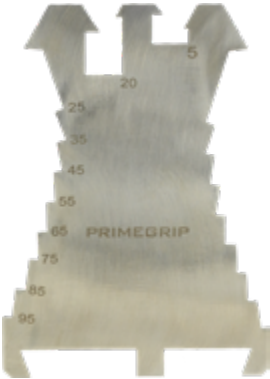


Seamlessly transition standing seam or corrugated panels from steep to low pitches. Fabricate clean, weather-tight corner joints and complex drip edges directly on the roof.

- Designed to execute razor-sharp pitch transitions with unparalleled speed and precision.
- Dedicated 45° and 90° transition sides.
- Compact, low-profile design.
- Durable, professional-grade materials.

INNER QTY: 6
MASTER QTY: 48

03-556
1/4"-4¼" MARKING TEMPLATE



Used for rapid marking consistent bend lines for custom ductwork and metal pans. Scoring exact measurements for custom drip edges, step flashing, and valley details. Ensure perfectly uniform folds on aluminum or steel fascia and window capping.

- Versatile marking range from 1/4" up to 4¼".
- Features sharp, rigid edges for scoring directly into sheet metal.
- Low-profile, lightweight design.
- Premium rust-resistant, durable stainless steel construction.

INNER QTY: 12
MASTER QTY: 72

FOLDING BARS



03-532



03-533



03-534

- Easy-to-use folding mechanism for metal sheets.
- Handy sight holes assure proper depth alignment.
- $\frac{3}{8}$ " and 1" bend depths.

PART #	PRODUCT NAME	INNER QTY	MASTER QTY
03-532	12" FOLDING BAR	3	24
03-533	18" FOLDING BAR	3	18
03-534	24" FOLDING BAR	3	12



HEMMING TOOLS



03-560



03-563

- Makes 1" bends in metal panels.
- $\frac{1}{8}$ " throat gap allows use with up to 15 gauge material.
- 12" handle with double layer cushion grip for smooth and effortless work.
- 10 gauge mild steel construction with heat-treated powder-coated finish for strength and durability.

PART #	PRODUCT NAME	INNER QTY	MASTER QTY
03-560	1"×14½" HEMMING TOOL	2	12
03-561	1½"×17¼" HEMMING TOOL	2	12
03-562	1½"×19" HEMMING TOOL	2	12
03-563	1½"×20" HEMMING TOOL	2	12



DRIP EDGE BENDERS



03-564



03-565



03-566

- Ideal for bending panel edges to create drip edges, can be used overhead or on a workbench for pre-bending.
- Make 1" or 1½" bends.
- 2 mm throat gap allows use with up to 18 gauge material.
- Bar-shaped handle allows two-handed use for extra leverage.
- 14 gauge mild steel construction, heat-treated powder coating.

PART #	PRODUCT NAME	INNER QTY	MASTER QTY
03-564	18" DRIP EDGE BENDER	2	12
03-565	24" DRIP EDGE BENDER	2	12
03-566	36" DRIP EDGE BENDER	-	2



AVIATION SNIPS



36-317



36-318



36-319

- Cuts 18 gauge cold-rolled steel and 22 gauge stainless steel.
- Chrome-molybdenum alloy steel forged blades with serrated edges for strength and durability.
- Comfortable handle with non-slip design.
- Spring-free automatic latch design.
- Meets ANSI standards.

PART #	PRODUCT NAME	INNER QTY	MASTER QTY
36-317	STRAIGHT CUT AVIATION SNIPS	6	48
36-318	LEFT CUT AVIATION SNIPS	6	48
36-319	RIGHT CUT AVIATION SNIPS	6	48

OFFSET AVIATION SNIPS



36-328



36-327



36-329

- Cuts 18 gauge cold-rolled steel and 22 gauge stainless steel.
- Chrome-molybdenum alloy steel forged blades with serrated edges for strength and durability.
- Offset blades provide increased reach in tight situations.
- Comfortable non-slip handles.
- Spring-free automatic latch design.

PART #	PRODUCT NAME	INNER QTY	MASTER QTY
36-328	OFFSET STRAIGHT AVIATION SNIPS	6	48
36-327	OFFSET LEFT AVIATION SNIPS	6	48
36-329	OFFSET RIGHT AVIATION SNIPS	6	48

OFFSET LONG CUT AVIATION SNIPS



36-323



36-324

- Cuts 20 gauge cold-rolled steel and 24 gauge stainless steel.
- Chrome-molybdenum alloy steel forged blades with serrated edges for strength and durability.
- Offset blades provide increased reach in tight situations.
- Comfortable non-slip handles.
- Spring-free automatic latch design.

PART #	PRODUCT NAME	INNER QTY	MASTER QTY
36-323	OFFSET STRAIGHT AVIATION SNIPS	6	36
36-324	OFFSET LEFT AVIATION SNIPS	6	36

VERTICAL OFFSET AVIATION SNIPS



36-325



36-326

- Cuts 24 gauge cold-rolled steel and 28 gauge stainless steel.
- Chrome-molybdenum alloy steel forged blades with serrated edges for strength and durability.
- Offset blades provide increased reach in tight situations.
- Comfortable non-slip handles.
- Spring-free automatic latch design.

PART #	PRODUCT NAME	INNER QTY	MASTER QTY
36-325	VERTICAL OFFSET LEFT AVIATION SNIPS	6	36
36-326	VERTICAL OFFSET RIGHT AVIATION SNIPS	6	36

TINSNIPS



36-353



36-354

- Flat inside edge face guides tool along a straight line.
- Cushion grip for comfort.
- Hand-edged hot drop-forged steel blades.
- Long lasting and rust-resistant.

PART #	PRODUCT NAME	INNER QTY	MASTER QTY
36-353	10" TINSNIPS	5	30
36-354	12" TINSNIPS	6	24

36-373
12" ALUMINIUM COMPOUND SCISSORS



Ideal for vinyl siding and can be used to cut sheet metal, roofing materials, carpet, plastic and canvas.

- Cuts straight, right and left curves in up to 22 gauge cold-rolled steel.
- 3" cutting length for fast shear.
- Protruding blade allows tight and precise cuts.
- Multiple handle openings to accommodate different hand sizes.

INNER QTY: 4
MASTER QTY: 24

36-374**12" ALUMINIUM SCISSORS**

Ideal for vinyl siding and can be used to cut sheet metal, roofing materials, carpet, plastic and canvas.

- Cuts straight, right and left curves in up to 22 gauge cold-rolled steel.
- 3" cutting length for fast shear.
- Multiple handle openings to accommodate different hand sizes.
- Rugged and lightweight aluminum design.

INNER QTY: 3
MASTER QTY: 30

36-375**14" ALUMINIUM SCISSORS**

Ideal for vinyl siding and can be used to cut sheet metal, roofing materials, carpet, plastic and canvas.

- Cuts straight, right and left curves in up to 22 gauge cold-rolled steel.
- 3" cutting length for fast shear.
- Multiple handle openings to accommodate different hand sizes.
- Rugged and lightweight aluminum design.

INNER QTY: 4
MASTER QTY: 24

36-480**8" MULTI-PURPOSE SHEARS**

Ideal for cutting sheet metal, plastic, leather, waterproofing material, etc.

- Stainless steel serrated blade.
- Spring loaded feed action.
- Safety latch to keep shears closed when not in use.
- Lightweight and durable anti-slip handles for a comfortable grip.

INNER QTY: 6
MASTER QTY: 36



36-481

8" MULTI-FUNCTION SCISSORS



Ideal for cutting sheet metal, plastic, leather, waterproofing material, etc.

- Stainless steel serrated blade.
- Extra wide grips for comfort.
- Includes box cutter, wire cutter, nut cracker and jar opener, and a plastic holster.
- Includes a plastic blade sheathe.

INNER QTY: 6
MASTER QTY: 36



36-482

10" MULTI-PURPOSE OFFSET SHEARS



Ideal for cutting sheet metal, plastic, leather, waterproofing material, etc.

- Stainless steel serrated blade.
- Spring loaded feed action.
- Ergonomic offset handle to keep hands safe while cutting.
- Adjustable range blade with additional safety lock functionality.

INNER QTY: 6
MASTER QTY: 36



33-500**SAMI SIDER ADJUSTABLE SIDING GAUGE****SAMI
SIDER**

The **SAMI SIDER** Adjustable Siding Gauge acts as your most reliable "second set of hands" on the job site. By clamping securely to the previous siding course, these gauges support the entire length of the next board, guaranteeing perfectly consistent reveals and freeing you up to nail it off solo. Works with fiber cement and LP Smart Siding.



- **One-Man Installation**—acts as a rigid support bracket for the next siding board. Eliminates the need for a person to hold the other end and cuts labour costs.
- **Flawless, Uniform Reveals**—adjustable set-screws lock into precision-measured holes for your desired reveal height. Ensures perfectly straight courses all the way up the wall without constantly measuring or checking your level.
- **Quick-Clamp Cam Lever**—locking lever engages with a simple push, speeding up your overall square-footage per hour. Adjustable to allow for varying board thickness.
- **Non-Marring Grip**—smooth clamping faces and a polymer body hold tight without digging into the material. The SAMI SIDER will not scratch, dent, or scuff pre-painted or primed fiber cement and lap siding.

MASTER QTY: 12

04-880**18 OZ TINNER'S HAMMER**

The perfect hammer for light to medium duty jobs and works well for striking common and finishing nails.

- Forged single piece steel head and handle for unsurpassed strength and durability.
- Finely polished head creates a smooth surface.
- Bonded shock reduction grip reduces shock significantly and lowers hand and arm fatigue.

INNER QTY: 6

MASTER QTY: 18

33-640
SNAP LOCK PUNCH



Makes tabs in the cut edge of a siding panel used as a finishing course at the top of a wall or below a window.

- All steel construction. Forged cutting jaw holds edge longer and assures a burr free cut.
- Punch impression spaced $\frac{3}{8}$ " from edge of metal.
- Non-slip vinyl cushion handle for a comfortable grip.

INNER QTY: 6
MASTER QTY: 48

33-643
SNAP LOCK PUNCH—EASY HANDLE



Makes tabs in the cut edge of a siding panel used as a finishing course at the top of a wall or below a window.

- All steel construction. Forged cutting jaw holds edge longer and assures a burr free cut.
- Punch impression spaced $\frac{3}{8}$ " from edge of metal.
- Non-slip vinyl cushion handle for a comfortable grip.

MASTER QTY: 36

33-700
SHEET METAL CRIMPER



Perfect crimps for tighter fitting, leakproof connections.

- Non-slip vinyl cushion grip.
- All steel construction.

INNER QTY: 6
MASTER QTY: 36

33-703

5-BLADE OFFSET CRIMPER



Crimping tool for gutters, ducts, metal pipes, etc.

- Offset blade keeps hand safely away from material.
- Optimized handle span for maximum power and comfortable operating range.
- Non-slip cushion grips for superior comfort and control.
- Safety latch for keeping blades closed.

INNER QTY: 6

MASTER QTY: 36

36-101

SIDING REMOVER—CURVED HANDLE



This compact siding removal tool combines the comfort and leverage of an easy-to-hold handle with the smooth unlocking motion of a burr free hook.

- Angled blade for wrist and knuckle protection.
- Blade finish prevents sharp hook from producing shavings or cutting vinyl material.
- Non-slip textured ergonomic handle.
- Durable spring steel construction.

INNER QTY: 12

MASTER QTY: 240

36-102

SIDING REMOVER—STRAIGHT HANDLE



This compact siding removal tool combines the comfort and leverage of an easy-to-hold handle with the smooth unlocking motion of a burr free hook.

- Angled blade for wrist and knuckle protection.
- Blade finish prevents sharp hook from producing shavings or cutting vinyl material.
- Non-slip textured ergonomic handle.
- Durable spring steel construction.

INNER QTY: 12

MASTER QTY: 144

26-124**16'5m×3/4" MEASURING TAPE**

Max strength professional measuring tape.

- Features Imperial and Metric units
- Blade lock mechanism
- Ergonomically designed rubber grip for extra comfort and durability
- Rubber lanyard for easy carrying

INNER QTY: 12
MASTER QTY: 72

26-138**25'×1" MEASURING TAPE**

Professional grade measuring tape with a blade lock and magnetic hook.

- Durable rubber grip.
- Thumb lock and 2 temporary blade stop buttons.
- Magnetic blade hook.
- Imperial units with 1/32 inch increment markings.
- Steel belt clip and rubber strap for easy carrying.
- Rubber lanyard for easy carrying.

INNER QTY: 12
MASTER QTY: 72

26-139**25'7.5m×1" MEASURING TAPE**

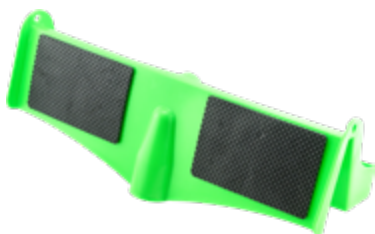
Magnetic marking measuring tape with blade lock mechanism and push release button.

- Imperial and metric units.
- Blade locking mechanism with release button.
- Rubber lanyard for easy carrying.

INNER QTY: 6
MASTER QTY: 48

73-503 GUTTER GUARD

GUTTER GUARD



- Installs quickly using a pole or broom handle.
- Supports the weight of the ladder and transfers it to the fascia.
- Features rubber pads to stabilize ladder.
- Bungee cord holes.
- Built-in tray for fasteners and small tools.
- For 5" and 6" gutters, ladders up to 18.25" wide.
- Lightweight, durable and UV resistant.

MASTER QTY: 12



73-400 SHORT BODY LADDER JACK



The Ladder Jack is an industrial-strength solution for creating a secure, comfortable staging area anywhere your ladder can reach.

- **Dual-rung design** hooks securely on two ladder rungs, reduces ladder stress and provides a stiffer, safer platform.
- **Rapid pitch adjustment**—features an 8-notch adjustment arm with a heavy-duty wing-nut lock. Easily adjust the angle of your platform to stay perfectly level, regardless of your ladder's pitch.
- **Deep rung channels** ensure ladder rungs fit securely. Prevents the ladder jack shifting or sliding. Compatible with most aluminum and fiberglass extension ladders.
- **All-steel construction** fabricated from high-grade, reinforced steel with heavy-duty MIG welds.
- Should be fully decked using an 18" wide platform that complies with OSHA requirements.
- Ideal for siding/eaves installation, exterior painting, window and masonry work.

MASTER QTY: 2

36-200**18 mm ULTRA SHARP SNAP-OFF KNIFE**

- Anti slip ABS body with rubber grip handle.
- Smooth ratchet wheel lock.
- Come with Primegrip ultra sharp carbon steel blade.

INNER QTY: 10
MASTER QTY: 120

36-201**18 mm ULTRA SHARP SNAP-OFF KNIFE WITH GRIP**

- Designed for heavy duty usage.
- Anti slip ABS body with rubber grip handle.
- Smooth ratchet wheel lock.
- Comes with Primegrip ultra sharp carbon steel blade.

INNER QTY: 10
MASTER QTY: 120

36-202**25 mm ULTRA SHARP SNAP-OFF KNIFE WITH GRIP**

- Designed for heavy duty usage.
- Anti slip ABS body with rubber grip handle.
- Smooth ratchet wheel lock.
- Comes with Primegrip ultra sharp carbon steel blade.

INNER QTY: 10
MASTER QTY: 120

36-224

25 mm ULTRA SHARP STRAIGHT GRIP SNAP-OFF KNIFE



- Designed for heavy duty usage.
- Anti slip ABS body with rubber grip handle.
- Smooth ratchet wheel lock.
- Comes with Primegrip ultra sharp carbon steel blade.

INNER QTY: 10
MASTER QTY: 120

18 mm SNAP-OFF KNIFE REPLACEMENT BLADES



Replacement blades for 18 mm snap-off knives.

- Ultra Sharp edge.
- Black carbon steel.
- Carrying case included

PART #	PRODUCT NAME	INNER QTY	MASTER QTY
36-218	18 MM REPLACEMENT BLADES—10 PACK	10	120
36-219	18 MM REPLACEMENT BLADES—50 PACK	4	24

36-220

25 mm SNAP-OFF KNIFE REPLACEMENT BLADES—10 PACK



Replacement blades for 25 mm snap-off knives.

- Ultra Sharp edge.
- Black carbon steel.
- Carrying case included

INNER QTY: 10
MASTER QTY: 120

45-120**9" HEAVY DUTY CAULKING GUN**

Contractor-grade gun designed for 300 ml (10 oz) tubes.

- Powder-coated revolving Q235 steel barrel.
- Ergonomically designed A00 aluminum handle and trigger.
- 1500 N pushing force, 12:1 thrust ratio.
- Built-in spout cutter and seal punch.

INNER QTY: 6

MASTER QTY: 12

45-121**SKELETON-TYPE CAULKING GUN**

9" half-barrel caulking gun. Suitable for light-to-medium applications of glazing, sealing or caulking.

- Quick-twist pressure release. Hex rod.
- Ladder hook at rear end of push rod.
- Aluminum handle. Built-in seal punch under rail.
- Orange steel frame and black handle.

MASTER QTY: 24

45-127**13" ROTATABLE SKELETON-TYPE CAULKING GUN**

Economical skeleton-type caulking gun designed for easy loading and a professional finish.

- Powder-coated iron construction with aluminum handle.
- 1200 N pushing force.
- 12:1 thrust ratio.
- Built-in seal punch.
- Built-in lanyard loop for work at heights.

MASTER QTY: 12

45-146
PREMIUM CAULKING GUN



9" high-performance caulking gun for use with 300ml tubes.

- Smooth rod. Quick-twist pressure release.
- High quality corrosion-resistant steel.
- Rotative cartridge frame. Spout cutter and pin.

MASTER QTY: 12

45-152
SAUSAGE-TYPE CAULKING GUN



15" high-performance caulking gun suitable for use with sausage packs and cartridges.

- Die-cast body with aluminum tube.
- Plastic plunger and application nozzles included.
- Replacement nozzles available.

INNER QTY: 1
MASTER QTY: 6

45-153
HEAVY DUTY CAULKING GUN NOZZLE—YELLOW



Plastic nozzle for 45-152 15" Sausage-Type Caulking Gun

INNER QTY: 1
MASTER QTY: 12

45-155
ECONOMY CAULKING GUN NOZZLE



Plastic nozzle for 45-152 15" Sausage-Type Caulking Gun

INNER QTY: 10
MASTER QTY: 500

CONTRACTOR GRADE CAULKING GUN



These heavy duty professional caulking guns are ideal for quick and efficient high quality finishes.

- 18:1 thrust ratio for use with acrylic, adhesives, asphalt, butyl and cement.
- 9 mm metallurgy driving dog. Zinc alloy handle.
- Quick-twist pressure release. Revolving barrel.
- Includes ladder hook.

PART #	PRODUCT NAME	INNER QTY	MASTER QTY
45-162	9" CONTRACTOR GRADE CAULKING GUN	-	12
45-163	13" CONTRACTOR GRADE CAULKING GUN	-	6

EXTENSION BIT HOLDERS

Extra-long extended driver for hard to reach areas.



18-601

18-602

18-603

- Outer sleeve allows for holding and directing the tool without any discomfort.
- Magnetic, low profile quick release bit holder.
- Auto locking drive.

PART #	PRODUCT NAME	INNER QTY	MASTER QTY
18-600	2 1/4" QUICK CONNECT EXTENSION BIT HOLDER	24	240
18-601	3" QUICK CONNECT EXTENSION BIT HOLDER	12	192
18-602	6" QUICK CONNECT EXTENSION BIT HOLDER	12	96
18-603	12" QUICK CONNECT EXTENSION BIT HOLDER	12	48
18-604	18" QUICK CONNECT EXTENSION BIT HOLDER	12	48
18-605	24" QUICK CONNECT EXTENSION BIT HOLDER	12	48

18-916**6-IN-1 STUBBY SCREWDRIVER**

Ideal screwdriver for the kitchen drawer and superb for close-quarters jobs.

- Slimmer handle than standard drivers.
- High-strength magnet holds bit and screw securely.
- Bits are ideal for use in drills and power drivers (power-rated ¼" hex, 1.3" long).
- Stores 5 bits in handle plus 1 in shaft.

INNER QTY: 12
MASTER QTY: 48

18-917**7-IN-1 SCREWDRIVER**

Full size multi-bit screwdriver for professional or at home use.

- Slim handle for maximum comfort and torque.
- Anodized aluminum alloy shank.
- Bits are ideal for use in drills and power drivers (power-rated 3/16" hex, 2" long).
- Instant bit change system.
- Stores 6 bits in handle plus 1 in shaft.

INNER QTY: 12
MASTER QTY: 48

BEAR CLAW

Primegrip professional series work gloves utilize a special blend of polyester and cotton to make the gloves comfortable and durable, allowing you to keep them on for hours at a time. Our selection of textures and coatings ranging from latex to nitrile, to polyurethane can cover a wide range of industries and working environments.

Our sizing options guarantee that no hand will go exposed.

Gloves that are designed to handle anything nature can throw at you. So, next time you are looking for paw protection, keep an eye out for the Bear Claw.

EASY COLOUR COORDINATED SIZE IDENTIFICATION

Glove sizes can be quickly identified by the colour of the cuff.



CHOOSE THE APPROPRIATE COATING FOR THE JOB

	POLYURETHANE	LATEX	NITRILE
ABRASION RESISTANCE	●	●	●
ELASTICITY / DEXTERITY	●	●	
EXTREME HEAT RESISTANCE			●
NON-ALLERGENIC	●		
EXTREME COLD RESISTANCE			●
OIL / GREASE RESISTANCE	●		●

23-970

WILDCAT POLY CRINKLE GLOVES



- 10G polyester/cotton shell, crinkled latex coating.
- High elasticity for dexterity and comfort.
- Superior grip in dry applications.
- Crinkle finish provides added abrasion resistance.

AVAILABLE IN:



INNER QTY: 12
MASTER QTY: 144

23-971

PANTHER LATEX FOAM COATING GLOVES



- 13G polyester/cotton shell, latex foam coating.
- High elasticity for dexterity and comfort.
- Superior grip in dry applications.

AVAILABLE IN:



INNER QTY: 12
MASTER QTY: 144

23-972

CHEETAH DOUBLE LATEX COATING GLOVES



- 13G polyester shell, double-dipped sandy latex coating.
- High elasticity for dexterity and comfort.
- Superior grip in dry applications.
- Double-dipped latex provides better durability and abrasion resistance.

AVAILABLE IN:



INNER QTY: 12
MASTER QTY: 144



- Hi-vis cotton/polyester gloves.
- High elasticity & abrasion resistance.
- Latex coated palm.
- Nylon knit liner.

AVAILABLE IN:



INNER QTY: 12
MASTER QTY: 144

23-975

CONDOR CUT-RESISTANT GLOVES



- 13G high performance polyethylene shell, sandy nitrile coating.
- ANSI Level 4 cut resistance.
- Offers better grip on wet and oily surfaces.
- Withstands wider range of chemicals.
- Extreme temperature resistance.

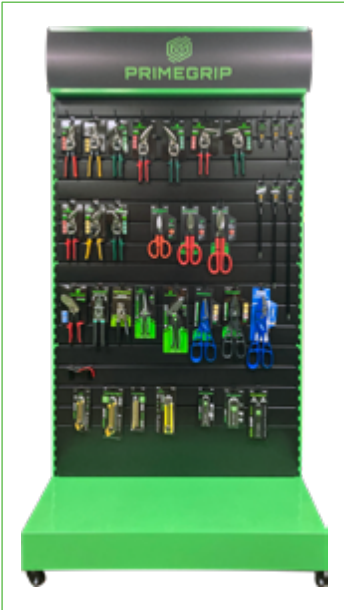
AVAILABLE IN:



INNER QTY: 12
MASTER QTY: 144

ASSORTMENT PLANOGRAMS

Customizable assortments available with display racks and fixtures. Contact your local rep.



BUILT BATTLE STRONG.™



3170 Orlando Dr. Unit 1,
Mississauga, ON L4V 1R5, Canada

T: (905) 671-4788

F: (905) 672-5499

INFO@PRIMELINETOOLS.COM
PRIMEGRIP.CA



312 W 2nd St. Unit A1311,
Casper, WY 82601, USA

T: 1 (833) 770-4747

F: (905) 672-5499

INFO@PRIMEGRIP.COM
PRIMEGRIP.COM