

# TOTAL GRIP

PROFESSIONAL SOLUTIONS FOR FALL ARREST AND FALL RESTRAINT

## HORIZONTAL LIFELINE SYSTEM



PRIMEGRIP



**PRIMEGRIP**

# TABLE OF CONTENTS

INTRODUCTION . . . . .	4
BASE PLATES . . . . .	8
INSTALLATION COMPONENTS . . . . .	14
KINETIC ABSORBER AND ANCHOR POINTS . . . . .	16
CABLE SUPPORT AND GUIDE COMPONENTS . . . . .	18
START/END COMPONENTS . . . . .	20
SLIDER . . . . .	22

# WHO WE ARE

Since 1985, Primeline Tools Inc. has been providing skilled professionals with the best equipment for their projects. As a family owned and operated business in Greater Toronto, Canada, we take great pride in providing the highest quality products to our customers across the globe.

Through our **Primegrip** division, we design and manufacture professional fall protection systems, including but not limited to anchor points, guard rail systems and horizontal lifelines, offering the most comprehensive and versatile solutions to help professionals working at heights. We pride ourselves on our emphasis and dedication to continually innovating and improving our products to ensure the highest quality and maximum function at a competitive price in the market.

We have identified three major strengths in our product lines that we utilize and build on to ensure our continued growth.

**1** The first is innovation and product diversity; we have vast knowledge and expertise in the industries we are involved in, from the operations of large-scale organizations right down to the needs of the smallest work crews. This expertise enables us to continuously innovate our product lines to maximize functionality and minimize price points, as well as expand our lines to supply additional tools needed by tradespeople. This strategy makes the sourcing and supply chain process easier to manage for our distributors and retailers as well by consolidating a range of products to a single vendor, Primeline Tools Inc.

**2** The second strength of product lines is retail merchandising. The quality of any product would go unnoticed without the kind of presentation that invites the customer to buy it. As part of our Retail Wall Program, we develop customized planogram solutions for our distributors. We select the product mix, design, implement, service and maintain the wall sections, contributing to unparalleled sales performance with minimal management required from our customer staff.

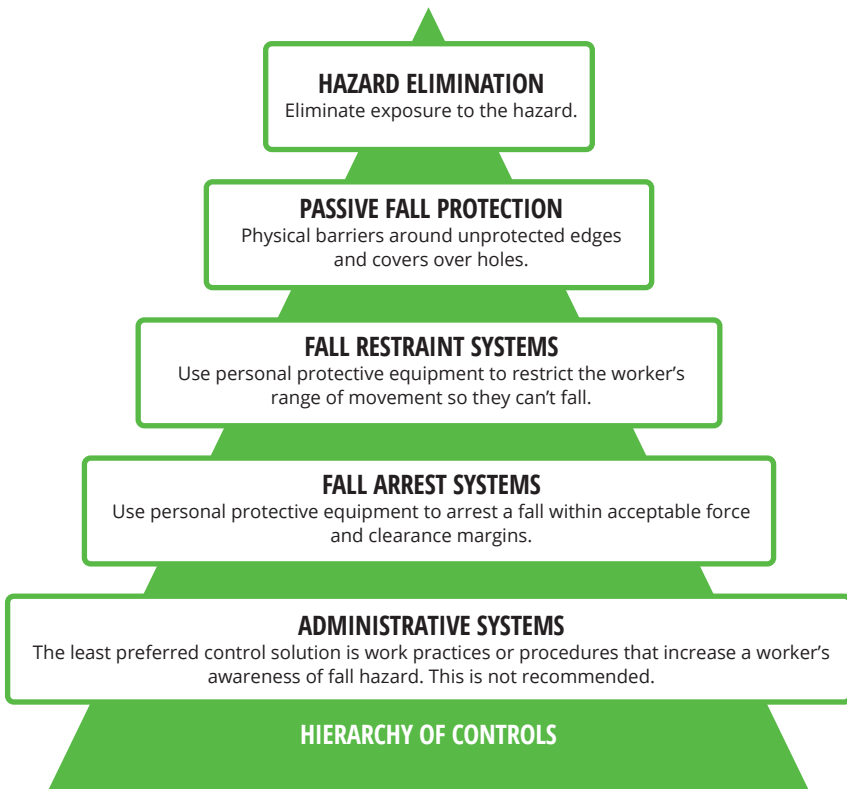
**3** Last, but definitely not least, is our brand identity. Bold colours that stand out in crowded retail spaces. Attractive merchandising with a focus on allowing our customers to feel the product and become comfortable with it before making a purchasing decision. Competitive price points so that our end users can focus on what they do best without worrying about taking care of expensive tools.

These are the reasons why professionals choose to go with the black & green.

# FALL PROTECTION

Fall protection is the use of controls designed to protect personnel from falling or in the event that they do fall, to stop them without causing severe injury. Typically, fall protection is implemented when working at heights, but may be relevant when working near any edge, such as near a pit or hole, or performing work on a steep surface.

There are five generally accepted categories of fall protection: hazard elimination, passive fall protection, fall restraint systems, fall arrest systems and administrative systems.



# **HORIZONTAL LIFELINE**

Horizontal Lifeline Systems, also known as HLL systems, are utilized in many fall protection applications and lie on the Fall Restraint Systems and Fall Arrest Systems rungs of the Hierarchy of Controls. They are common solutions in work areas that lack existing anchor points for personnel tie-off. In its simplest form, a horizontal lifeline consists of a cable attached to two or more anchor points on a rooftop, crane runway, bridge, outdoor construction site or any other elevated work area that poses a fall risk to personnel.

A horizontal lifeline can be positioned at the base of a structure (e.g., a roof), overhead (e.g., railcar and truck loading/unloading applications) or somewhere in between these points (e.g., crane rail applications).

## **TOTAL GRIP HLL SYSTEM**

The Total Grip HLL System from Primegrip is a complete solution that can be adapted to any work area. Our system can be installed directly to the roof or to the structure if necessary, depending on the calculation obtained through our HLL Assistant calculation tool.

Our selection of bases allows the Total Grip system to be used on any type of structure; concrete, metal, roof with insulation, trapezoidal roof, standing seam roof, round or double-folded and many others.

### **NON-INVASIVE INSTALLATION**

Our HLL System has been designed with the integrity of the roof structure in mind. Our installation components are considered non-invasive with a limited number of components. It employs bulb tite rivets on trapezoidal roofs and S-5-U clamps on standing seam roof, round or double fold. Only the installation of our Aluminum Base Plate requires a small hole of 4.5 cm to install the required toggle anchor.

### **UNINTERRUPTED CONNECTION**

Another key distinction of the Total Grip system is our simply designed yet convenient and safe Roof/Wall slider, which allows users to move smoothly and without interruptions throughout the entire installed horizontal lifeline, passing through the cable guides without needing to disconnect from the line.

### **MODULAR DESIGN**

Due to our sophisticated design and modular configuration, our system can be installed using posts with integrated kinetic absorber between a tensioner end and a swage end, or with rigid posts between a line dampener and tensioner end.

# WHY PRIMEGRIP

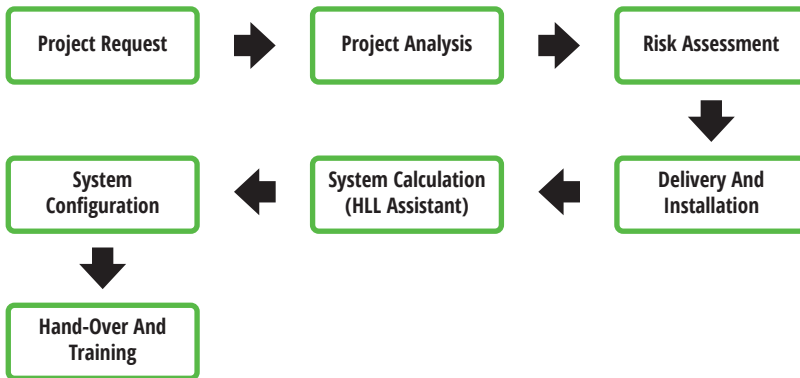
## DISTRIBUTOR SUPPORT

As a well-established company with years of experience supplying safety equipment to the trades, we are well-versed in the technical and operational responsibilities of a safety equipment manufacturer. We offer a complete suite of complimentary services in conjunction with our HLL systems to ensure success for our distributors and proper use for the end users.

A typical project cycle for the Total Grip HLL system is shown below and our training program for approved distributors includes:

- How to analyze fall protection hierarchy of controls.
- How to prepare a quote for our system.
- How to use our HLL Assistant calculation tool.
- How to install the proposed system.
- How to make periodic inspections.

## PROJECT CYCLE



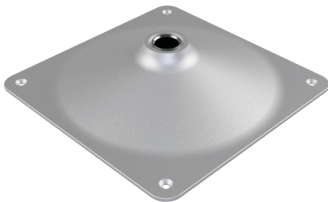
## THE PRIMEGRIP DIFFERENCE

- Products designed and tested under the strictest quality standards
- Easy to install with minimum impact on the structure
- Low cost of maintenance and ownership
- In-house engineering, design and testing with ability to develop custom solutions for every building and industry
- Applied engineering for special applications and tailor-made solutions

# BASE PLATES

- Aluminum Base Plate
- Steel MD Plate
- Extruded 550/700 Base Plate

## 23-20200 | ALUMINUM BASE PLATE



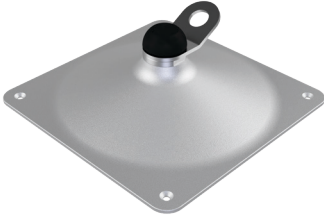
If you need to install over concrete, metal roof with insulation or steel structure, you should select our Aluminum Base Plate.

The Aluminum Base Plate is designed to be used as a single anchor point or as part of our permanent lifeline system Total Grip.

The Aluminum Base Plate is the connection between the roofing structure and the worker through the anchor point installed on it.



## 23-20201 | ALUMINUM BASE PLATE + 360 ANCHOR POINT M30



The Aluminum Base Plate in combination with the 360 Anchor Point can be used as a single anchor point for fall arrest, positioning or fall restraint.

This combination consists of a 360 Anchor Point M30 installed directly onto the Aluminum Base Plate, allowing 360° rotation, and offering the worker freedom of movement.

---

## 23-20202 | ALUMINUM BASE PLATE + RIGID POST



The Aluminum Base Plate in combination with the Rigid Post can be used as part of our permanent horizontal lifeline system Total Grip.

This configuration does not include integrated energy absorption like the Kinetic Absorber, so it should always be installed in combination with our Line Dampener System to absorb the energy generated when a fall occurs, in order to reduce the loads exerted on the roof structure.

This combination consists of a Rigid Post installed directly onto the Aluminum Base Plate. The components of our horizontal lifeline system Total Grip are mounted on top of the Rigid Post to provide support to the steel wire rope.

---

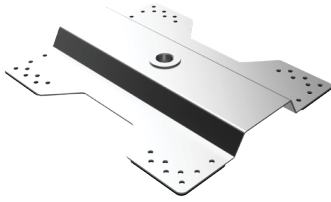
## 23-20203 | ALUMINUM BASE PLATE + KINETIC ABSORBER



The Aluminum Base Plate in combination with the Kinetic Absorber can be used as a single anchor point or as part of our permanent horizontal lifeline system Total Grip. It is designed to absorb the energy generated when a fall occurs in order to reduce the loads exerted on the roof structure.

This combination consists of a Kinetic Absorber installed directly onto the Aluminum Base Plate. The components of our Horizontal Lifeline System Total Grip are mounted on top of the Kinetic Absorber to provide support to the steel wire rope.

## 23-20810 | STEEL BENT PLATE 400



If you need to install over a trapezoidal roof, you should select our steel bent plate.

The Steel Bent Plate is a stamped manufactured plate that is designed to be used as a single anchor point or as part of our permanent lifeline system Total Grip.

Our Steel Bent Plate is the connection between the roofing structure and the worker through the anchor point installed on it.

---

## 23-20811 | STEEL BENT PLATE 400 + 360 ANCHOR POINT M30

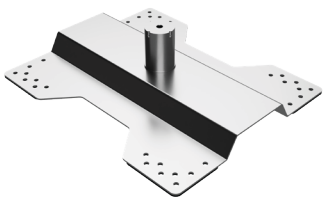


The Steel Bent Plate in combination with the 360 Anchor Point can be used as a single anchor point for fall arrest, positioning or fall restraint.

This combination consists of a 360 Anchor Point M30 installed directly onto the Steel Bent Plate, allowing 360° rotation, and offering the worker freedom of movement.

---

## 23-20812 | STEEL BENT PLATE 400 + RIGID POST

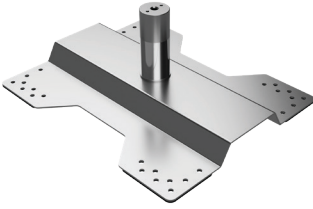


The Steel Bent Plate in combination with the Rigid Post can be used as part of our permanent horizontal lifeline system Total Grip.

This configuration does not include integrated energy absorption like the Kinetic Absorber, so it should always be installed in combination with our Line Dampener System to absorb the energy generated when a fall occurs, and reduce the loads exerted on the roof structure.

This combination consists of a Rigid Post installed directly onto the Steel Bent Plate. The components of our Horizontal Lifeline System Total Grip are mounted on top of the Rigid Post to provide support to the steel wire rope.

## 23-20813 | STEEL BENT PLATE 400 + KINETIC ABSORBER



The Steel Bent Plate in combination with the Kinetic Absorber can be used as a single anchor point or as part of our permanent horizontal lifeline system Total Grip. It is designed to absorb the energy generated when a fall occurs and reduce the loads exerted on the roof structure.

This combination consists of a Kinetic Absorber installed directly onto the Steel Bent Plate. The components of our Horizontal Lifeline System Total Grip are mounted on top of the Kinetic Absorber to provide support to the steel wire rope.

---

## 23-30550 | EXTRUDED BASE PLATE 550



If you need to install over standing seam roof, round or double fold ribs, even trapezoidal roof, you should select our Extruded Base Plate 550 or 700 depending on the rib distance.

The Extruded Base Plate 550 is an extruded aluminum plate designed to be used as a single anchor point or as part of our permanent lifeline system Total Grip. Extruded Base Plate is the connection between the steel standing seam roof or trapezoidal roof and the worker.

---

## 23-30551 | EXTRUDED BASE PLATE 550 + 360 ANCHOR POINT M30



The Extruded Base Plate in combination with the 360 Anchor Point can be used as a single anchor point for fall arrest, positioning or fall restraint.

This combination consists of a 360 Anchor Point M30 installed directly onto the Extruded Base Plate, allowing 360° rotation, and offering the worker freedom of movement.

## 23-30552 | EXTRUDED BASE PLATE 550 + RIGID POST



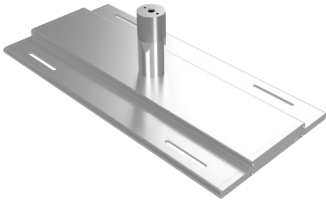
The Extruded Base Plate in combination with the Rigid Post can be used as part of our permanent horizontal lifeline system Total Grip.

This configuration does not include integrated energy absorption like the Kinetic Absorber, so it should always be installed in combination with our Line Dampener System to absorb the energy generated when a fall occurs.

This combination consists of a Rigid Post installed directly onto the Extruded Base Plate. The components of our Horizontal Lifeline System Total Grip are mounted on top of the Rigid Post to provide support to the steel wire rope.

---

## 23-30553 | EXTRUDED BASE PLATE 550 + KINETIC ABSORBER



The Extruded Base Plate in combination with the Kinetic Absorber can be used as a single anchor point or as part of our permanent horizontal lifeline system Total Grip. It is designed to absorb the energy generated when a fall occurs in order to reduce the loads exerted on the roof structure.

This combination consists of a Kinetic Absorber installed directly onto the Extruded Base Plate. The components of our horizontal lifeline system Total Grip are mounted on top of the Kinetic Absorber to provide support to the steel wire rope.

---

## 23-30700 | EXTRUDED BASE PLATE 700

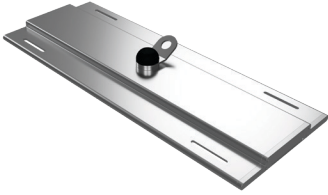


If you need to install over a standing seam roof, round or double fold ribs, or even a trapezoidal roof, you should select our Extruded Base Plate 550 or 700 depending on the rib distance.

The Extruded Base Plate is an extruded aluminum plate designed to be used as a single anchor point or as part of our permanent horizontal lifeline system Total Grip.

Our Extruded Base Plate is the connection between the steel standing seam roof or trapezoidal roof and the worker.

## 23-30701 | EXTRUDED BASE PLATE 700 + 360 ANCHOR POINT M30



The Extruded Base Plate in combination with the 360 Anchor Point can be used as a single anchor point for fall arrest, positioning or fall restraint.

This combination consists of a 360 Anchor Point M30 installed directly onto the Extruded Base Plate, allowing 360° rotation, and offering the worker freedom of movement.

---

## 23-30702 | EXTRUDED BASE PLATE 700 + RIGID POST



The Extruded Base Plate in combination with the Rigid Post can be used as part of our permanent horizontal lifeline system Total Grip.

This configuration does not include integrated energy absorption like the Kinetic Absorber, so it should always be installed in combination with our Line Dampener System to absorb the energy generated when a fall occurs.

This combination consists of a Rigid Post installed directly onto the Extruded Base Plate. The components of our horizontal lifeline system Total Grip are mounted on top of the Rigid Post to provide support to the steel wire rope.

---

## 23-30703 | EXTRUDED BASE PLATE 700 + KINETIC ABSORBER



The Extruded Base Plate in combination with the Kinetic Absorber can be used as a single anchor point or as part of our permanent horizontal lifeline system Total Grip. It is designed to absorb the energy generated when a fall occurs in order to reduce the loads exerted on the roof structure.

This combination consists of a Kinetic Absorber installed directly onto the Extruded Base Plate. The components of our horizontal lifeline system Total Grip are mounted on top of the Kinetic Absorber to provide support to the steel wire rope.

# INSTALLATION COMPONENTS

- Toggle Anchor
- 8mm Aluminum Rivets
- S-5-U Clamps

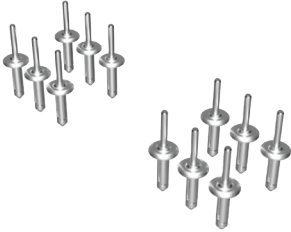
## 23-20100 | TOGGLE ANCHOR



The Toggle Anchor is used for the installation of our Aluminum Base Plate on different types of roof materials, like trapezoidal steel roof with insulation, plywood and steel deck with minimum 0.6 mm gauge (cal. 24).

It is shaped to provide maximum contact surface when the installation is made.

## 23-20101 | BULB TITE RIVETS

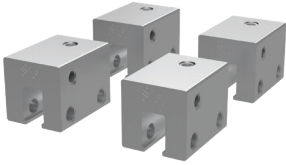


The 8 mm Aluminum Rivets are used for the installation of our Steel Bent Base Plate on roof materials like trapezoidal steel roof, trapezoidal steel roof with insulation and steel deck with minimum 0.6 mm gauge (cal 24).

We recommend using 12 8mm Aluminum Rivets to provide maximum contact surface when the installation is made.

---

## 23-20102 | S-5-U CLAMPS



The S-5-U Aluminum Clamps are used for the installation of our Extruded Base Plate on roof materials like standing seam roof, double fold or round fold with minimum 0.6 mm gauge (cal 24).

Due to its shape and connection with the roof ribs, it provides maximum contact surface when the installation is made.

# KINETIC ABSORBER AND ANCHOR POINTS

- Kinetic Absorber
- Rigid Post
- 360 Anchor Point M30
- 360 Anchor Point M12

## 23-20300 | KINETIC ABSORBER



The Kinetic Absorber is designed to absorb the energy generated when a fall occurs. It can be used as a single anchor point or as part of our permanent horizontal lifeline system Total Grip.

The components of our Horizontal Lifeline System Total Grip are mounted on top of the Kinetic Absorber to provide support to the steel wire rope. Kinetic Absorber is the interface between a base plate and the top components like an Intermediate Guide or 360° Rotator.



## 23-20301 | RIGID POST



The Rigid Post is the simplest post (support) of our horizontal lifeline system. It can be used as a single anchor point or as part of our permanent horizontal lifeline system Total Grip. The components of our Horizontal Lifeline System are mounted on top of the Rigid Post to provide support to the steel wire rope. The Rigid Post is the interface between a base plate and the top components like an Intermediate Guide or 360° Anchor Point. It does not include integrated energy absorption like the Kinetic Absorber, so it should always be installed in combination with our Line Dampener System in a horizontal lifeline setup to absorb the energy generated when a fall occurs.

---

## 23-20400 | 360 ANCHOR POINT M30



The 360 Anchor Point M30 is installed as a single anchor point for fall restraint, positioning and as an anti-pendulum when installed directly onto Aluminum Base Plate, Extrusion Base Plate or Steel MD Plate.

This anchor point can also be used for fall arrest when installed onto Kinetic Absorber (M12 Version).

This anchor point can rotate 360°, which provides maximum freedom of movement for the worker.

---

## 23-20405 | 360 ANCHOR POINT M12



The 360 Anchor Point M12 is installed as a single anchor point for fall restraint, positioning, and as an anti-pendulum when installed onto our Rigid Post.

This anchor point also can be used for fall arrest when installed onto Kinetic Absorber.

This Anchor Point can rotate 360°, which provides maximum freedom of movement for the worker.

# CABLE SUPPORT AND GUIDE COMPONENTS

- Intermediate Guide
- Corner 45
- Corner 90

## 23-20500 | INTERMEDIATE GUIDE



The Intermediate Guide is used as the guide and cable support of our permanent horizontal lifeline system Total Grip. It is designed in such a way that users can pass through it without disconnection of the system. The Intermediate Guide is installed on top of our Kinetic Absorber.

The installation of Intermediate Guides at regular intervals is recommended to ensure optimal distribution of forces when a fall occurs.

## 23-20600 | CORNER 45



The Corner 45 is used as the corner guide and cable support of our permanent horizontal lifeline system Total Grip. It is designed in such a way that users can pass through it without disconnection of the system.

The Corner 45 is installed on top of our Kinetic Absorber or our Rigid Post.

---

## 23-20700 | CORNER 90



The Corner 90 is used as the corner guide and cable support of our permanent horizontal lifeline system Total Grip. It is designed in such a way that users can pass through it without disconnection of the system.

The Corner 90 is installed on top of our Kinetic Absorber.

---

# START/END COMPONENTS

- Tensioner End
- Swage End
- Line Dampener System
- Line Dampener System / Tensioner Kit

## 23-21050 | TENSIONER END



One end of our Tensioner Device is installed onto our Kinetic Absorber or our Rigid Post, and the other end is attached to the cable which provides support to our permanent horizontal lifeline system Total Grip.

This device is used to apply tension to the lifeline. The right tension applied to the line ensures that the entire system works properly if a fall occurs.

## 23-21060 | SWAGE END

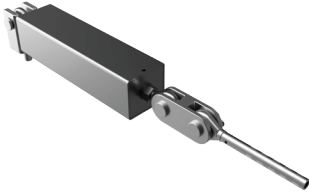


Our Swage End is the cable connector hold, it is the most simple start/end point of our permanent horizontal lifeline, this device is installed onto our Kinetic Absorber or our Rigid Post and the other end is attached to the cable which provides support to our permanent horizontal lifeline system Total Grip.

The cable can be crimped through the terminal tube at the end of the connector to give the lifeline a firm connection.

---

## 23-41000 | LINE DAMPENER SYSTEM



One end of our Line Dampener System is installed onto our Kinetic Absorber or our Rigid Post and the other end is attached to the cable which provides support to our permanent horizontal lifeline system Total Grip.

This device is designed to absorb the energy released when a fall occurs.

---

## 23-41050 | LINE DAMPENER SYSTEM + TENSIONER



One end of our Line Dampener Tensioner Kit is installed onto our Kinetic Absorber or our Rigid Post and the other end is attached to the cable which provides support to our permanent horizontal lifeline system Total Grip.

This device is used to apply tension to the lifeline and at the same time to absorb the energy released during a fall. The right tension applied to the line ensures that all components and the entire system works properly, and the line dampener will be able to absorb the energy when a fall occurs.

# SLIDER

- Roof/Wall Slider

## 23-20900 | ROOF/WALL SLIDER



The Roof/Wall Slider is our runner. It is designed to allow a smooth passage through cable supports like intermediate guides and corners without the need to disconnect from the cable.



# PRIMEGRIP

PRIMEGRIP, A DIVISION OF PRIMELINE TOOLS INC.  
3170 Orlando Dr. Unit 1, Mississauga, ON L4V 1R5, Canada

**T:** (905) 671-4788 **F:** (905) 672-5499

INFO@PRIMELINETOOLS.COM  
PRIMELINETOOLS.COM