

ROOFING CATALOGUE



PRIMEGRIP

Since 1985, Primeline Tools has been providing skilled professionals in the roofing, siding, HVAC, electrical, automotive and construction trades with the best equipment for their projects. As a family owned and operated business, we take great pride in our continuous innovation, competitive pricing and uncompromising quality.

Our Primegrip division is a pioneering manufacturer of a wide range of tools for the roofing and siding industry. We have aimed to set the standards of excellence in the market for more than 30 years and continue to do so. Our dedication to maintaining our core values has elevated the Primegrip brand of products from humble beginnings to the forefront of the industry.



TABLE OF CONTENTS

BRACKETS & LADDER ACCESSORIES	4	ANCHORS	56
CHIMNEY CAPS	7	CONNECTORS	65
CUTTING	8	GLOVES	67
HAMMER TACKERS & STAPLES	15	GUARD RAILS	70
HAMMERS & HATCHETS	16	HARNESSES	71
MAGNET BROOMS	18	LANYARDS	77
POUCHES & TOOL HOLDERS	19	LIFELINES	79
TEAR-OFF & REPAIR	23	PERSONAL PROTECTION	83
DRAIN ACCESSORIES	28	SAFETY KITS	88
HEAT GUNS & ACCESSORIES	30	SUPPORT BELTS	91
ROLLERS	32	TIE DOWNS	93
MOPS & SQUEEGEES	35	AIR HOSES & FITTINGS	94
TORCHES & MOD BIT	37	CAULKING GUNS	97
EQUIPMENT & ACCESSORIES	43	EXTENSION CORDS	98
BENDING TOOLS	44	MEASURING & MARKING	99
SCREWDRIVERS & BIT HOLDERS	48	PAINTING TOOLS	101
SOLDERING	49	TAPES	102
SIDING	50	TARPS	104
SLATE ROOFING	55	PRODUCT INDEX	105



ROOFING BRACKETS

The best and most economical solution for applications where consistent roof pitches and roof elevations are frequently encountered.



2" x 6" ROOFING BRACKET – 45°
UPC: 626939733217

FEATURES

- Centrally mounted and welded steel ribbing plate with extra heavy duty welds which make them over 30% stronger than regular fixed roof brackets.
- Provides a built-in cord and hose management system that helps prevent accidental tripping or falling caused by entanglement in air hoses and electrical cords on roof decks.
- Made from $\frac{1}{8}$ " steel and features a double-welded base plate fulcrum, reinforced ribbing that eliminates roof bracket flexing under excessive loads.
- Has a unique steel plate welded in to the load bearing fulcrum of each bracket that dramatically improves the strength and durability of the bracket compared to conventional roof brackets.
- Bench tested to support 2,000 lb of load.

PART #	PRODUCT NAME
73-321	2" x 6" ROOFING BRACKET – 45°
73-322	2" x 6" ROOFING BRACKET – 60°
73-325	2" x 10" ROOFING BRACKET – 45°
73-326	2" x 10" ROOFING BRACKET – 60°
73-334	2" x 6" ROOFING BRACKET – 90°

**PROVIDES A BUILT-IN CORD
 AND HOSE MANAGEMENT
 SYSTEM**

73-335

ADJUSTABLE ROOF BRACKET

User-friendly roof bracket that is adjustable to fit multiple roof pitches and planks of varying sizes.



ADJUSTABLE ROOF BRACKET
UPC: 626939733354

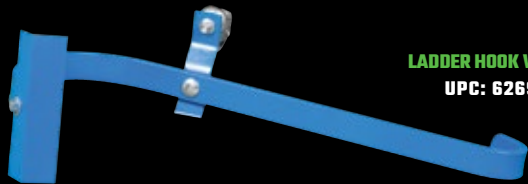
FEATURES

- Adjusts to 33°, 45°, 60° and 90° angles to fit multiple pitches.
- Can be used with 2"×6", 2"×8" or 2"×10" planks and can also be used with 2"×2" planks at 33° and 45°.
- Features a nail hole in step to secure the plank, four long slots for added safety and convenience, a rib in the stem to eliminate flexing, and a flat heel.
- Can be used as a standard roof bracket or for commercial applications as a slide guide.

73-338

LADDER HOOK WITH WHEEL

Durable and convenient ladder hook with wheel.



LADDER HOOK WITH WHEEL
UPC: 626939733385

FEATURES

- Adjusts to fit between the top two ladder rungs.
- Compatible with wood, fiberglass, or aluminum ladders.
- Compatible with round or d-rung styles.
- Two hooks must be used per ladder.

73-343

LADDER STABILIZER STRAPS

Secure your ladder against movement. Simply wrap the straps around each ladder leg, nail the plate into the roof deck and tighten until secure.



LADDER STABILIZER STRAPS
UPC: 626939733439

FEATURES

- Easy installation.
- Minimizes lateral movement or rocking.
- Solid zinc cam buckles.
- Can be used with most roofing materials.
- Helps protect gutters and roof edges.

73-400**SHORT BODY LADDER JACK**

The 2-Rung ladder jack is MIG welded and possesses a riveted construction for superior strength and durability. It is set up over 2 consecutive ladder rungs, can be used on either side of a ladder, and is ideal for painting, siding, and repair applications.



SHORT BODY LADDER JACK
UPC: 626939734009

FEATURES

- Tough riveted and welded ladder jacks will work on the inside or outside ladder face.
- Many uses, such as, painting, siding, window repair, and/or general repair.
- Super quick set-up and tear down.
- Should be fully decked using an 18" wide platform that complies with OSHA requirements.
- Adjustable to fit round or "D" rung ladders.

23-SA1034**LADDER LOCK**

The ladder lock is a safety device that keeps ladders from sliding side to side. Safely secures your ladder in seconds and can be adjusted to support and keep gutters from caving in. It can hang from a tool belt and attach quickly to plywood, metal overhangs, drip edge, wall cap flashings, gutters and tubing.



LADDER LOCK
UPC: 786158103403

FEATURES

- Prevents ladder from sliding side to side.
- Connects to all standard size extension ladders in seconds.
- Attaches to plywood, gutters, drip edge, tubing and more.
- Solid steel construction.
- Complies with OSHA 1926.1053(B)(1).

73-405**LADDER RUNG STEP**

The ladder rung step is specially designed to reduce worker fatigue by expanding the foot support of the ladder rung.



LADDER RUNG STEP
UPC: 626939734054

FEATURES

- Provides more stability to the extension ladder.
- Compatible with nearly any ladder.
- Made from durable and lightweight aluminum.
- Installs quickly and easily without any tools.

73-403

SAFE-T LADDER EXTENSION SYSTEM

The ladder extension system is designed to attach to the top of a ladder to provide a safe and easy transition from the ladder to a raised surface.



SAFE-T LADDER EXTENSION SYSTEM

UPC: 012643008008

FEATURES

- Requires no tools, drilling, or bolting to install.
- Provides 2 offsetting handrails for a point of walk-through to step on or off the ladder.
- Assists workers in complying with OSHA standard 1926.1053(b).
- Doesn't scratch or damage the ladder.
- Safety latch to prevent it from slipping off the ladder.
- Cushioned bumper pads to protect the roof.
- Hand grips help ensure maximum safety.

CHIMNEY CAPS

Helps keep debris and rodents out of the chimney.



8" x 8" CHIMNEY CAP

UPC: 626939455225

FEATURES

- Cold-rolled steel.
- Powder coating.
- Black finish.

PART #	PRODUCT NAME
45-522	8" x 8" CHIMNEY CAP
45-523	8" x 12" CHIMNEY CAP
45-526	12" x 12" CHIMNEY CAP

ROOFING AIR KNIFE

Cut shingles effortlessly and efficiently with the Primegrip pneumatic air knife. Drastically reduces costs of jobs by reducing the amount of time spent on cutting shingles and the instances of waste material due to inaccurate cuts. Ideal for cutting tougher material like fiberglass shingles or frozen shingles in harsh winter conditions.



ROOFING AIR KNIFE
UPC: 626939362103

FEATURES

- Sturdy and lightweight aluminum construction.
- Swiveling quick connect attachment for air hoses.
- Use with primegrip 36-212 and 36-213 high carbon blades.
- Can also be used to cut EPDM membranes, insulation, single ply roofing systems, etc.

PART #	PRODUCT NAME
36-210	ROOFING AIR KNIFE
36-212	ROOFING AIR KNIFE BLADES—3 PACK
36-213	ROOFING AIR KNIFE BLADE—1 PACK

36-250 RETRACTABLE UTILITY KNIFE

Super heavy duty utility knife.



RETRACTABLE UTILITY KNIFE
UPC: 626939362509

FEATURES

- Patented rapid blade change system.
- Spring-loaded safety toggle.
- Rear blade storage.
- Durable metal body.
- Slip-resistant cushion grip.

36-274 FIXED BLADE ROOFER'S KNIFE

Super heavy duty knife with double notched blade for added security.



FIXED BLADE ROOFER'S KNIFE
UPC: 626939362745

FEATURES

- Easy blade change using a solid brass notched wheel.
- Includes durable plastic holster.

36-279

BARRACUDA PROFESSIONAL KNIFE

Professional roofing knife compatible with straight or hook blades.



BARRACUDA PROFESSIONAL KNIFE
UPC: 626939362790

FEATURES

- Durable and lightweight aluminum body.
- Ergonomic ABS grip prevents knife from slipping out of sweaty hands.
- Quick operation release button allows blade change without opening knife.
- Spare blade storage compartment opens up at the push of a button.

36-280

ROOFER'S SHARK KNIFE

The #1 fixed blade utility knife designed for professionals!



ROOFER'S SHARK KNIFE
UPC: 626939362806

FEATURES

- Ergonomic handle is designed to prevent hand and wrist fatigue.
- Durable and strong aluminum body.
- Easy to change blade using quick rotating wheel.
- Fits most standard utility, concave and hook blades.
- Bonus compact holster included.

36-290

FIXED BLADE SWING TYPE KNIFE

General purpose knife with a swivel handle for quick blade changes.



FIXED BLADE SWING TYPE KNIFE
UPC: 626939362905

FEATURES

- Handle swivels open for quick, easy blade change.
- Comfortable, contoured 6" handle.
- Interlocking nose design for safety.
- Works with all Primegrip replacement utility straight and hook blades.
- 3 blades included!

36-291

DUAL BLADE ROOFING KNIFE

This uniquely designed dual-ended knife allows the user to equip two different styles of blades without having to carry two different knives.



DUAL BLADE ROOFING KNIFE
UPC: 626939362912

FEATURES

- Does the job of 2 knives.
- Fast front end blade changes.
- Mix or match any 2 blades.
- Features safety interlock preventing both blades from simultaneous extension.
- Includes 1 hooked blade for shingles and 1 utility blade for roofing paper.

36-292

KNUCKLE SAVER ROOFING KNIFE

The Knuckle Saver Roofing Knife is specially designed with an extra long handle to keep knuckles clear and safe while cutting roofing shingles. The bulging grip design keeps the knife from slipping out of the hand and comes with a wide lanyard hole for easy carrying.

**KNUCKLE SAVER ROOFING KNIFE****UPC: 626939362929****FEATURES**

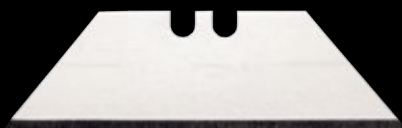
- Long handle keeps knuckles from grazing against shingles.
- Angled grip for easy cutting around caps, dormers and tight corners.
- Bulging grip prevents slipping.
- Lanyard hole for easy hands-free carry.
- Long lasting zinc-reinforced bottom edge and shallow screw for opening quickly.
- High visibility fluorescent green colour.
- Clip holder keeps blades from rattling inside; comes with three SK5 hook blades.



Roofing knife specially designed with an extra long handle to keep knuckles clear and safe while cutting shingles.

KNIFE BLADES

Primegrip knife blades can be used with most utility and roofing knives to cut roofing shingles, felt paper, foam board, insulation, shingles and other building materials. Manufactured from high-grade carbon steel and induction hardened for longevity, our blades last up to 75% longer.



2-NOTCH STRAIGHT BLADES
UPC: 626939362530



2-NOTCH DEEP HOOK BLADES
UPC: 626939362561



2-NOTCH TITANIUM SUPER HOOK BLADES
UPC: 626939362578



2-NOTCH BLUNT HOOK BLADES
UPC: 626939362585

FEATURES

- Can be used with all Primegrip knives.
- Induction-hardened edge offers 75% longer-lasting blade life.
- Heat treated for strength and induction hardened for longevity.
- Titanium improves wear resistance and extends blade life even more than steel—ideal for cutting through more abrasive materials.
- Available in 5 Pack or 100 Pack.

PART #	PRODUCT NAME	PART #	PRODUCT NAME
36-251	3-NOTCH STRAIGHT BLADES—5 PACK	36-257	2-NOTCH TITANIUM SUPER HOOK BLADES—5 PACK
36-261	3-NOTCH STRAIGHT BLADES—100 PACK	36-267	2-NOTCH TITANIUM SUPER HOOK BLADES—100 PACK
36-253	2-NOTCH STRAIGHT BLADES—5 PACK	36-258	2-NOTCH BLUNT HOOK BLADES—5 PACK
36-263	2-NOTCH STRAIGHT BLADES—100 PACK	36-268	2-NOTCH BLUNT HOOK BLADES—100 PACK
36-254	2-NOTCH TITANIUM STRAIGHT BLADES—5 PACK	36-259	2-NOTCH SUPER HOOK BLADES—5 PACK
36-260	2-NOTCH TITANIUM STRAIGHT BLADES—100 PACK	36-269	2-NOTCH SUPER HOOK BLADES—100 PACK
36-256	2-NOTCH DEEP HOOK BLADES—5 PACK	36-288	18 MM SNAP-OFF HOOK BLADES
36-266	2-NOTCH DEEP HOOK BLADES—100 PACK		

ULTRA SHARP

General purpose professional grade snap-off utility knives.



25 MM KNIFE WITH RUBBER GRIP
UPC: 626939362028

FEATURES

- Anti slip ABS body with rubber grip handle.
- Smooth ratchet wheel lock.
- Come with Primegrip ultra sharp carbon steel blade.

PART #	PRODUCT NAME
36-199	18 MM KNIFE IN BULK DISPLAY
36-200	18 MM KNIFE
36-201	18 MM KNIFE WITH RUBBER GRIP
36-202	25 MM KNIFE WITH RUBBER GRIP
36-218	18 MM BLADES—10 PACK
36-219	18 MM BLADES—50 PACK
36-220	25 MM BLADES—10 PACK

73-340 SHINGLE CUTTER

Designed for accurate and repeatable cuts at any angle, as well as lengthwise cuts for the starter course used along the lower edge of the roof.



SHINGLE CUTTER
UPC: 626939733408

FEATURES

- Standard and offset guide fences to cut any angle.
- Cuts any asphalt or fiberglass shingle.
- Cuts material face up or down, and from top or bottom edge as needed.
- Cuts starter row (Imperial or Metric) and ridge cap.

73-341 ALUMINUM SHINGLE CUTTER

Efficient, lightweight and easy to use shingle cutter designed to save you time, money and effort on the job.



ALUMINUM SHINGLE CUTTER
UPC: 626939733415

FEATURES

- Makes cutting all types of fiberglass and asphalt shingles fast, easy, and accurate.
- Quick reference cutting enables cuts at any length or any angle without any set up or adjustment.
- Durable aluminum construction makes it very lightweight and easy to handle.
- Blades are easily sharpened and low-cost replacement blades available.

FELT KNIVES—WOOD

A complete line of felt knives ranging in size from 3"–8". All our felt knives are manufactured from the highest quality materials and are ideal for cutting felt paper, sheeting and insulating boards.



4" FELT KNIFE WITH WOODEN HANDLE
UPC: 626939362738

FEATURES

- 3", 4", 6" and 8" blade lengths.
- Ideal for roofers.
- High quality spring steel.
- High quality wooden handle.

PART #	PRODUCT NAME
36-271	3" FELT KNIFE WITH WOODEN HANDLE
36-273	4" FELT KNIFE WITH WOODEN HANDLE
36-305	6" FELT KNIFE WITH WOODEN HANDLE
36-306	8" FELT KNIFE WITH WOODEN HANDLE

FELT KNIVES—DURAGRIP

A complete line of felt knives ranging in size from 3"–8". All our felt knives are manufactured from the highest quality materials and are ideal for cutting felt paper, sheeting and insulating boards.



4" FELT KNIFE WITH DURAGRIP HANDLE
UPC: 626939363025

FEATURES

- 3", 4", 6" and 8" blade lengths.
- Ideal for roofers.
- High quality spring steel.
- Soft rubber "Duragrip" handle.

PART #	PRODUCT NAME
36-301	3" FELT KNIFE WITH DURAGRIP HANDLE
36-302	4" FELT KNIFE WITH DURAGRIP HANDLE
36-303	6" FELT KNIFE WITH DURAGRIP HANDLE
36-304	8" FELT KNIFE WITH DURAGRIP HANDLE

STAINLESS STEEL SCISSORS

Stainless steel scissors ideal for cutting various fabrics and upholstery.



8" STAINLESS STEEL SCISSORS
UPC: 626939364640

FEATURES

- Precision ground blades for sharper cutting edges and longer blade life.
- Handle designed to comfortably fit user's hands.
- Hot drop-forged nickel plated blades.
- Available in 3 sizes: 8", 10" and 12".

PART #	PRODUCT NAME
36-464	8" STAINLESS STEEL SCISSORS
36-466	10" STAINLESS STEEL SCISSORS
36-468	12" STAINLESS STEEL SCISSORS

36-470

TEFLON-COATED SCISSORS

11" Teflon-coated stainless steel scissors ideal for cutting glued papers, fabrics or adhesive tapes.



TEFLON-COATED SCISSORS
UPC: 626939364701

FEATURES

- Serrated edge holds fabrics for a precise cut.
- Ergonomic handle is easy on tired and arthritic hands.
- Perfect for cutting sticky material like tape, building wraps and roof membranes.

36-275

2-STAR ANGULAR BLADE

Carbide blade for use with powered tear-off tools and roof saws.



2-STAR ANGULAR BLADE
UPC: 626939362752

FEATURES

- 12" carbide-tipped blades for economical cut.
- Carbide tips offers a less resistant cut.
- Laser cut A235 high carbon steel blades and induction welded carbide inserts for strength and impact resistance.

CORE CUTTERS

Specialty tool designed to take roof test cuts easily and efficiently.



2" CORE CUTTER
UPC: 626939224029

FEATURES

- Manufactured from special aircraft specification metal.
- Precision machined, sharpened and heat treated for long life.
- The specially hardened teeth can be resharpened.
- Removable handles for easy transport and storage.
- Available in 2" and 3" diameters.

36-276

4-STAR ANGULAR BLADE

Carbide blade for use with powered tear-off tools and roof saws.



4-STAR ANGULAR BLADE
UPC: 626939362769

FEATURES

- These unique angled roof cutting blades provide superior performance and long life.
- The precision cutting angle ensures maximum surface contact to slice through materials, even stubborn resaturants, while minimizing the force of the blade impact to make blades last longer.
- The tip angle provides the best wear and power efficiency.

PART #	PRODUCT NAME
22-402	2" CORE CUTTER
22-403	3" CORE CUTTER

04-951
6 MM – 10 MM HAMMER TACKER

Heavy duty hammer tacker with contractor grade quality steel construction and a shock-absorbing rubber grip.



6 MM – 10 MM HAMMER TACKER
UPC: 626939049516

FEATURES

- Ideal for fast installation of carpeting, roofing materials or insulation.
- Heavy-duty steel construction for added durability.
- Full rubber grip absorbs shocks and protects hands.
- Uses ¼" – ⅜" (6 mm – 10 mm) staples.

AR-HT50P
ARROW HAMMER TACKER

Made with a chromed steel housing, all-steel working parts hardened in a 1,500° furnace, and a high impact sure-grip handle. Holds two full strips of T50 staples.



6 MM – 10 MM HAMMER TACKER
UPC: 079055000532

FEATURES

- Durable chrome finish.
- All-steel construction.
- Specially designed power grip handle.
- Jam-proof mechanism.

ARROW T50 STAPLES

Arrow T50 staples deliver exceptional holding power for heavy duty stapling applications.



3/8" – 1250 PACK
UPC: 079055500384

FEATURES

- For use with all T50 system tools.
- Ideal for installing insulation, housewraps, roofing underlayments, upholstery, etc.
- Available in a range of staple sizes and pack quantities.

PART #	PRODUCT NAME
AR-504	¼" – 1250 PACK
AR-505	⅝" – 1250 PACK
AR-506	⅜" – 1250 PACK
AR-508	½" – 1250 PACK
AR-509	⅝" – 1250 PACK
AR-50CT	CEILTILE STAPLES – 1250 PACK
AR-504IP	¼" – 5000 PACK
AR-505IP	⅝" – 5000 PACK
AR-506IP	⅜" – 5000 PACK
AR-508IP	½" – 5000 PACK

04-175

16 OZ CLAW HAMMER

Standard multi-purpose claw hammer with a forged steel head and fiberglass handle.



16 OZ CLAW HAMMER
UPC: 626939041756

FEATURES

- Extra durable forged steel head.
- Super strong, ultra-light and anti-vibration fiberglass ergonomic handle.
- Sharp claw for precision and efficiency.
- Ideal for masonry, walls, bricks and concrete.

04-456

16 OZ STEEL SHINGLING HATCHET

Shingling hatchet drop-forged from a single piece of high carbon steel with shock absorbing cushion grip.



16 OZ STEEL SHINGLING HATCHET
UPC: 626939044566

FEATURES

- Single piece drop-forged high grade carbon steel.
- Heat treated and tempered for maximum strength.
- 16 oz head with depth gauge, nail notch and a milled face.
- Shock absorbing ergonomic cushion grip.

ESTWING RIPPING HAMMERS

Estwing's Ripping Hammers feature a single-piece forged head and handle. The Shock Reduction Grip® offers the utmost in comfort and durability, reducing vibrations caused by impact.



16 OZ RIPPING HAMMER
UPC: 034139623816

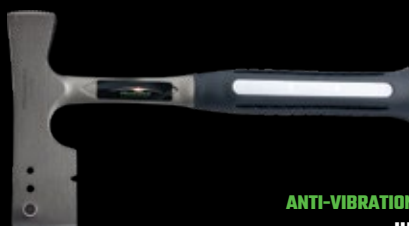
FEATURES

- Solid steel construction.
- Smooth face.
- Two sizes: 16 and 20 oz head weight.
- Blue Shock Reduction Grip®.
- Made in the USA.

04-458

ANTI-VIBRATION SHINGLING HATCHET

Solid steel shingling hatchet drop-forged from a single piece of high carbon steel for ultimate durability. The anti-vibration handle results in a smooth and comfortable experience.



ANTI-VIBRATION SHINGLING HATCHET
UPC: 626939044580

FEATURES

- Single piece construction drop-forged from high grade carbon steel.
- Precisely heat treated and tempered for maximum strength.
- Finely polished and balanced.
- 14 oz head with depth gauge, nail notch and a milled face.
- Shock absorbing anti-vibration handle, ergonomically shaped for comfortable handling.

PART #	PRODUCT NAME
E3-16S	16 OZ RIPPING HAMMER
E3-20S	20 OZ RIPPING HAMMER

HICKORY SHINGLING HATCHETS

The Primegrip line of hickory shingling hatchets is famed for its solid and durable construction, lightweight and ergonomic handle design with a range of available sizes. Professional quality high carbon steel heads with hardened faces strike hard and true, and the premium hickory handles with their lacquered finishes are a beauty to behold.



14 OZ SHINGLING HATCHET
UPC: 626939044436

FEATURES

- Fixed blade and replaceable gauge.
- Triple wedge construction and milled face.
- Premium hickory handle, flame and lacquer finish.
- 4 head sizes: 14 oz, 16 oz, 20 oz and 24 oz.

PART #	PRODUCT NAME
04-442	16 OZ SHINGLING HATCHET
04-443	14 OZ SHINGLING HATCHET
04-444	20 OZ SHINGLING HATCHET
04-445	24 OZ SHINGLING HATCHET

ESTWING SHINGLING HATCHETS

Estwing's Solid Steel Shingling Hatchet has a fully polished head and handle neck, molded on nylon vinyl Shock Reduction Grip®.



MILLED FACE SHINGLING HATCHET
UPC: 034139621416

FEATURES

- Solid steel construction and milled face.
- 1.8125" edge & 1.625" edge.
- Blue Shock Reduction Grip®.
- Made in the USA.

PART #	PRODUCT NAME
E3-S	MILLED FACE SHINGLING HATCHET
E3-LS	MILLED FACE LIGHTWEIGHT SHINGLING HATCHET

E3-CA REPLACEABLE BLADE HATCHET

Solid steel milled face shingling hatchet with polished head and neck, nylon vinyl grip and a retractable cutting blade. Adjustable for 4", 5", 5½" exposure.



REPLACEABLE BLADE HATCHET
UPC: 034139620815

FEATURES

- Solid steel construction.
- Replaceable blade and gauge.
- Milled face.
- 1.8125" cutting edge.
- Blue Shock Reduction Grip®.
- Made in the USA.

SURE-PICK MAGNET BROOMS

Primegrip magnet brooms help clean metal debris from hard to reach areas, come with a removable magnet for easy cleaning and a range of sizes.

FEATURES

- Removable magnet for easy cleaning.
- Easy to use on most surfaces.
- Available in 20" and 24" magnet widths.

PART #	PRODUCT NAME
73-222	20" SURE-PICK MAGNET BROOM
73-223	24" SURE-PICK MAGNET BROOM



20" SURE-PICK MAGNET BROOM
UPC: 626939732227

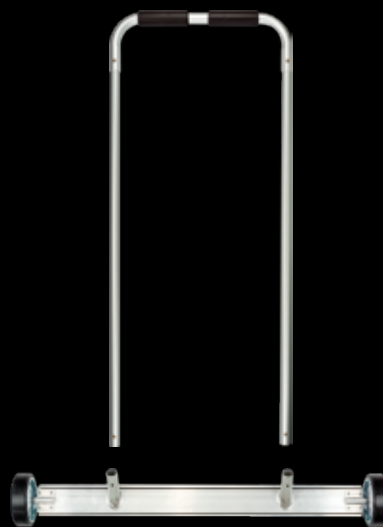
73-255 MAGNET BROOM WITH U-HANDLE

Primegrip magnet brooms help clean metal debris from hard to reach areas, come with a removable magnet for easy cleaning and a range of sizes.

FEATURES

- Extra wide 36" magnet broom to cover wide areas quickly and efficiently.
- Removable magnet for easy cleaning.
- Easy to use on most surfaces.
- Ergonomically designed U-handle for minimal pushing effort.

**EXTRA WIDE 36" MAGNET
BROOM TO COVER WIDE
AREAS QUICKLY**



36" MAGNET BROOM WITH U-HANDLE
UPC: 626939732555

73-244

16" MAGNET SWEEPER

Handheld magnet sweeper that cleans metal debris over small areas. Removable magnet for easy cleaning.



16" MAGNET SWEEPER
UPC: 626939732449

FEATURES

- Small magnet sweeper, easy to store.
- Ideal for close quarters clearing.
- Carrying strap for portability.
- Removable magnet for easy cleaning.

73-218

18" MAGNET BROOM

Economical and compact magnet broom, ideal for small areas.



18" MAGNET BROOM
UPC: 626939732180

FEATURES

- Removable handle for storage and transportation.
- Easy to use on most surfaces.

FABRIC POUCHES

Primegrip tool pouches made for comfort and longevity with carefully designed compartments for optimized storage and a lightweight feel.



2-POCKET TOOL POUCH
UPC: 626939231416

FEATURES

- Commercial grade utility belt grommets.
- 9" deep pockets on tool bags.
- Made from 600d polyester PVC-coated fabric.
- Velcro back for added security anti-movement.

43-204

10-POCKET LEATHER POUCH

Premium leather tool organizers for professional tradespeople.



10-POCKET LEATHER POUCH
UPC: 626939432042

FEATURES

- 4 tier design for easy separation of tools and fasteners.
- 1 large main pocket, 1 medium-sized nail pocket, 2 belt level inner pockets, 6 small tool pockets.
- 2 metal hammer holders.
- Top-grain oil-tanned leather for heavy duty work loads and extended product life.

PART #	PRODUCT NAME
23-141	2-POCKET TOOL POUCH
23-142	3-POCKET TOOL POUCH

13-POCKET POUCHES

2 premium quality tool organizers with 2" leather belt for professional tradespeople.



13-POCKET LEATHER POUCH
UPC: 626939432066

FEATURES

- 1 large main pocket, 1 medium-sized nail pocket, 2 belt level inner pockets, 6 small tool pockets.
- 2 metal hammer holders.
- High quality leather for heavy duty work loads and extended product life.

PART #	PRODUCT NAME
43-206	13-POCKET LEATHER POUCH WITH 2" LEATHER BELT
43-226	13-POCKET SUEDE POUCH WITH 2" LEATHER BELT

WAIST BELTS

Top grain leather waist belts.



2" WAIST BELT
UPC: 626939433933

FEATURES

- Manufactured from top-grain leather.
- Heavy roller buckle.
- Available in 1½" or 2" widths.

PART #	PRODUCT NAME
43-392	1½" WAIST BELT
43-393	2" WAIST BELT

23-143 HAMMER HOLDER

Polyester fabric hammer holder.



HAMMER HOLDER
UPC: 626939231430

FEATURES

- Commercial grade utility belt grommets.
- Made from 600d polyester PVC-coated fabric.
- Velcro back for added security anti-movement.

43-216 HAMMER & KNIFE HOLDER

Top grain leather holder for hammer and knife.



HAMMER & KNIFE HOLDER
UPC: 626939432165

FEATURES

- Rugged top grain leather.
- Lock stitching reinforced with rivets.
- Roll over type belt loop.
- Steel cradle hammer holder.

43-300

LEATHER HAMMER HOLDER

Oil-tanned fixed leather hammer holder.



LEATHER HAMMER HOLDER
UPC: 626939433001

FEATURES

- Manufactured from top-grain, heavy duty leather.
- Fixed steel loop.
- Suitable for belts up to 2" wide.

43-314

LEATHER SCISSOR HOLDER

Top grain leather scissor holder.



LEATHER SCISSOR HOLDER
UPC: 626939433148

FEATURES

- 10½" leather sheath.
- Hangs from belt.
- Includes pocket for roofing shears.
- Includes roller loop for seam roller.

43-313

KNIFE SHEATHE

Top grain leather knife sheathe.



KNIFE SHEATHE
UPC: 626939433131

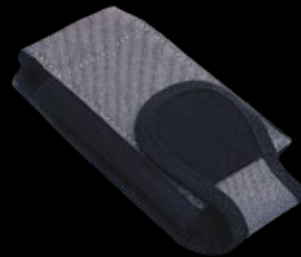
FEATURES

- Constructed of saddle leather designed to fit most knives and pliers.
- Reinforced stress points.
- Stainless rust-resistant tape clip.
- Fits up to 2" wide belts.

23-SA6415

SAFETY GLASSES HOLDER

Safety glasses holder. Made from heavy duty nylon.



SAFETY GLASSES HOLDER
UPC: 786158641509

FEATURES

- Heavy duty nylon construction.
- Velcro attachment for attaching to shoulder strap.
- Elastic sides for secure fit.
- Fits most common size safety glasses.
- Black & silver colour.

23-SA6416

VERTICAL MOBILE PHONE HOLDER

Mobile phone holder. Made from heavy duty nylon.



VERTICAL MOBILE PHONE HOLDER
UPC: 786158641608

FEATURES

- Heavy duty nylon construction.
- Velcro attachment for attaching to shoulder strap.
- Elastic sides for secure fit.
- Fits most common size phones/iPods.
- Black & silver colour.

23-SA6418

PERSONAL EFFECTS HOLDER

Personal effects holder. Made from heavy duty nylon.



PERSONAL EFFECTS HOLDER
UPC: 786158641806

FEATURES

- Heavy duty nylon construction.
- Velcro attachment for attaching to shoulder strap.
- Elastic sides for secure fit.
- Black & silver colour.

23-SA6421

ALL-PAKKA JUMBO CARGO BAG

This jumbo cargo bag is large enough to store all of your personal fall arrest items as well as your hard hat, glasses, 3-ring binder, gloves, etc. It is PVC coated 600d exterior and 300d interior fabric that resists water absorption and abrasion. The bag opening has wire reinforcement and provides easy access.



ALL-PAKKA JUMBO CARGO BAG
UPC: 786158642100

FEATURES

- 5300 cubic inches of storage space.
- Heavy duty base plate for long life.
- Holds 3-ring binders with ease.
- Wire reinforced opening for easy access.
- 6 interior pouches, 5 exterior pouches.



09-276

CLAWVERINE

This patented flashing removal tool is the ultimate tool for cleaning nails from step flashing. Use the prying end to feel out those pesky nails hidden under step flashing and lift them up slightly. Then simply hook the nail into one of the slits in the extractor head and pivot horizontally against the wall to pull the nail out. Reduces effort required and saves money by avoiding damaged step flashing!

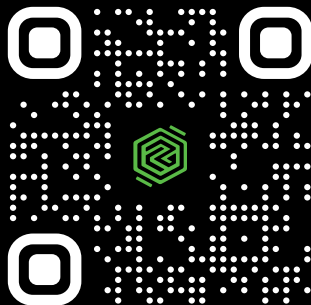


CLAWVERINE

UPC: 626939092765

FEATURES

- Sleek, strong and rugged design.
- Rounded extractor head has notches that enable easy removal of nails from tight spots with a single turning motion.
- Bent pry bar end provides increased leverage to lift flashing or pry nails.
- Simple construction allows the Clawverine to fit into any standard tool holder.



**SCAN THE
CODE TO
SEE THE
CLAWVERINE
IN ACTION**

09-201

15" UTILITY BAR

Portable lightweight prying bar. Ideal for pulling nails, prying, lifting and scraping.



15" UTILITY BAR
UPC: 626939092017

FEATURES

- Contoured shape makes pulling nails, prying, lifting and scraping easier.
- Nail slots at both ends for easy nail removal.
- Forged high-carbon steel for increased strength and durability.

09-277

ROOF SNAKE

The Roof Snake makes replacing composition shingles safer, easier and more accurate than traditional methods.



ROOF SNAKE
UPC: 626939092772

FEATURES

- Enables easy installation of 3-tab shingles without striking surrounding shingles or fingers with the hammer.
- Offset nail-slot aligns new nails with proper 1" offset from the bottom edge of existing course.
- Nail pulling claw for removing nails.

SHINGLE POPPER

Roofer's shingle removal shovel.



SHINGLE POPPER
UPC: 626939833306

FEATURES

- Steel head with teeth on the front and back.
- Plate welded to the front for strength and shingle lifting.
- Has gliders underneath head for lifting leverage.
- Handle made of high quality Canadian hickory.

83-326

ROOF RUNNER

Roofer's shingle removal shovel.



ROOF RUNNER
UPC: 626939833269

FEATURES

- Serrated blade.
- Tilt back construction of the blades provides added leverage for roof removal.
- 46" handle made of high quality Canadian hickory with D-handle grip.

PART #	PRODUCT NAME
83-330	36" SHINGLE POPPER WITH D-HANDLE
83-329	48" SHINGLE POPPER
83-321	24" MINI SHINGLE POPPER

PRIME RIPPER



The Prime Ripper roofing shovel is a rugged shingle and nail removal tool designed to drastically reduce time and effort involved in residential roof repairs.



FEATURES

- Lightweight and durable.
- Pries forwards and backwards for increased productivity.
- Centre wing at the base of the handle allows shingles to slide off effortlessly.
- Patented EZ-Gliders under the blade allow seamless gliding and increased leverage for prying nails, resulting in up to 75% less effort and more efficiency.



PART #	PRODUCT NAME
83-300	PRIME RIPPER ROOFING SHOVEL
83-301	PRIME RIPPER WITH 48" HANDLE
83-302	PRIME RIPPER WITH 24" HANDLE

IF IT AIN'T BROKE, IMPROVE IT.



83-333

HEAVY DUTY ROOFER'S SHOVEL

Roofers shingle removal shovel.



HEAVY DUTY ROOFER'S SHOVEL
UPC: 626939833337

FEATURES

- Single piece forged steel head.
- Welded rear plate for lifting leverage.
- 42" ash handle with metal and wood D-handle grip.

83-337

HEAVY DUTY PITCH FORK

Spading fork, ideal for lifting shingles and sheeting.



HEAVY DUTY PITCH FORK
UPC: 626939833375

FEATURES

- Single piece forged and tempered steel head.
- Four 10" tines with golden finish.
- Ash handle with D-handle grip.

ADJUSTABLE WRENCHES

Our adjustable wrenches are made from drop-forged steel with a corrosion resistant coating. They also feature a wide cushion grip for maximum comfort.



12" ADJUSTABLE WRENCH
UPC: 626939023356

FEATURES

- Drop-forged steel.
- Chrome Vanadium coating for rust and corrosion resistance.
- Non-slip grip.

PIPE WRENCHES

Primegrip heavy duty aluminum wrenches provide contractor grade strength in lightweight aluminum.



14" ALUMINUM PIPE WRENCH
UPC: 626939022342

FEATURES

- 50% lighter than identical cast iron models.
- Tapered handle, better grip and weight distribution.
- Drop-forged heat treated steel jaws, adjustment nut.
- SAE width markings for quick reference.

PART #	PRODUCT NAME
02-332	6" ADJUSTABLE WRENCH
02-333	8" ADJUSTABLE WRENCH
02-334	10" ADJUSTABLE WRENCH
02-335	12" ADJUSTABLE WRENCH

PART #	PRODUCT NAME
02-234	14" ALUMINUM PIPE WRENCH
02-235	18" ALUMINUM PIPE WRENCH
02-236	24" ALUMINUM PIPE WRENCH

06-403
6 LB RAILROAD PICK HEAD

6 lb head for railroad picks.



6 LB RAILROAD PICK HEAD
UPC: 626939064038

FEATURES

- 6 lb head only.
- No. 6 eye.
- Pick handle sold separately.

69-461
ASH PICK HANDLE

For use with 06-403—6 lb Railroad Pick Head.



ASH PICK HANDLE
UPC: 626939694617

FEATURES

- 36" pick handle.
- Ash wood construction.
- Proudly made in Canada.

SPUD BARS

Spud bar with 57" D-Handle. Ideal for removal of gravel, slag, old roofing, etc. Blades sold separately.



3 1/2" SPUD BAR
UPC: 626939068654

FEATURES

- Welded steel for maximum strength.
- Ideal for removal of gravel, slag, old roofing, etc.
- Replaceable pre-hardened carbon steel blades.
- Heat-treated flexible blades resist breaking.



3 1/2" SPUD BAR BLADE
UPC: 626939068678

PART #	PRODUCT NAME
06-865	3 1/2" SPUD BAR
06-866	7" SPUD BAR
06-867	3 1/2" SPUD BAR BLADE
06-868	7" SPUD BAR BLADE



DRAIN SEALS

Specifically designed to shorten the Super Dome and PC/PET RetroDrain, SuperDome and TPO RetroWeld drains when the existing pipe turns immediately below the roof deck. Made with highest quality, can be used as an add-on to create a leakage proof insert type roof drain.



4" DRAIN SEAL
UPC: 626939460045

FEATURES

- Mechanical compression seal used to shorten the retrofit drain.
- Tough nylon flanges and stainless steel screws provide the necessary strength torque to compress the EPDM rubber gasket.
- The seal is activated by tightening the internal screws with the drain seal screwdriver.

TECHNICAL SPECIFICATIONS	3" DRAIN SEAL	4" DRAIN SEAL	5" DRAIN SEAL	6" DRAIN SEAL
Part #	46-003	46-004	46-005	46-006
Material	Polyprene and EPDM rubber	Polyprene and EPDM rubber	Polyprene and EPDM rubber	Polyprene and EPDM rubber
Low temperature impact	-40°C (ASTM D-2136)	-40°C (ASTM D-2136)	-40°C (ASTM D-2136)	-40°C (ASTM D-2136)
Brittle point	-57.8°C (ASTM D-746)	-57.8°C (ASTM D-746)	-57.8°C (ASTM D-746)	-57.8°C (ASTM D-746)
Accelerated weathering	Min. 5,000 hours (ASTM D-2565 xenon)	Min. 5,000 hours (ASTM D-2565 xenon)	Min. 5,000 hours (ASTM D-2565 xenon)	Min. 5,000 hours (ASTM D-2565 xenon)
Linear dimension change	0.0% (ASTM D-1204)	0.0% (ASTM D-1204)	0.0% (ASTM D-1204)	0.0% (ASTM D-1204)
24h immersion weight change	0.0% (ASTM D-570)	0.0% (ASTM D-570)	0.0% (ASTM D-570)	0.0% (ASTM D-570)
Back-up pressure resistance	>35 KPA	>35 KPA	>35 KPA	>35 KPA
Standard overall thickness	0.20"	0.20"	0.20"	0.20"
Standard inside diameter	2.01"	2.62"	3.93"	4.86"
Min. Height (uncompressed)	2.76"	2.76"	2.76"	2.76"
Max. Height (uncompressed)	4.14"	4.14"	4.14"	4.14"

46-100 DRAIN SEAL SCREWDRIVER

24" #2 Robertson screwdriver for 3"-6" Drain Seals (46-003-46-006). It is used to tighten the special recess head screws on the drain seal.



DRAIN SEAL SCREWDRIVER
UPC: 626939461004

FEATURES

- 24" shaft ensures ease of reach when tightening the seal connection screws.
- Extra wide pistol grip handle prevents accidental drop into the drain.

MAXXFLO DRAIN SEALS

Retrofit roof drain seal used to seal a retrofit drain to an existing drainpipe rapidly and efficiently.



MAXXFLO 4" DRAIN SEAL
UPC: 626939460083

FEATURES

- Faster installation than conventional drain seals.
- Single unit ABS-EPDM construction assures equal total compression.
- No metal parts fatigue due to lack of screws.
- No obstruction from debris accumulation allows maximum water flow.
- Use the Maxxflo Universal Tool to tighten.

TECHNICAL SPECIFICATIONS	MAXXFLO 3" DRAIN SEAL	MAXXFLO 4" DRAIN SEAL	MAXXFLO 5" DRAIN SEAL	MAXXFLO 6" DRAIN SEAL
Part #	46-007	46-008	46-009	46-010
Material	ABS & EPDM rubber	ABS & EPDM rubber	ABS & EPDM rubber	ABS & EPDM rubber
Low temperature impact	-40°C (ASTM D-2136)	-40°C (ASTM D-2136)	-40°C (ASTM D-2136)	-40°C (ASTM D-2136)
Brittle point	-57.8°C (ASTM D-746)	-57.8°C (ASTM D-746)	-57.8°C (ASTM D-746)	-57.8°C (ASTM D-746)
Accelerated weathering	Min. 5,000 hours (ASTM D-2565 xenon)	Min. 5,000 hours (ASTM D-2565 xenon)	Min. 5,000 hours (ASTM D-2565 xenon)	Min. 5,000 hours (ASTM D-2565 xenon)
Linear dimension change	0.0% (ASTM D-1204)	0.0% (ASTM D-1204)	0.0% (ASTM D-1204)	0.0% (ASTM D-1204)
24h immersion weight change	0.0% (ASTM D-570)	0.0% (ASTM D-570)	0.0% (ASTM D-570)	0.0% (ASTM D-570)
Back-up pressure resistance	>35 KPA	>35 KPA	>35 KPA	>35 KPA
Standard inside diameter	2.00"	2.62"	3.93"	4.86"

MAXXFLO SEAL TOOLS

Compression tools for MAXXFLO line of drain seals.



MAXXFLO 3" TOOL
UPC: 626939461011

FEATURES

- Solid steel construction.
- Wide grip handle for comfort and minimal effort.

PART #	PRODUCT NAME
46-101	MAXXFLO 3" DRAIN SEAL TOOL
46-102	MAXXFLO 4" DRAIN SEAL TOOL
46-103	MAXXFLO 6" DRAIN SEAL TOOL
46-104	MAXXFLO 5" DRAIN SEAL TOOL
46-109	MAXXFLO UNIVERSAL TOOL

FLEXIBLE PIPE COUPLINGS

Flexible couplings for leakproof pipe seals.



4" FLEXIBLE COUPLING
UPC: 626939462049

FEATURES

- Connect cast iron, plastic, copper or steel pipe.
- For drain, waste and vent pipes only.
- Meet Uniform Plumbing Code, CSA B602 Type A and ASTM C1173 standards.
- Installation torque: 60 inch lb.

PART #	PRODUCT NAME
46-203	3" FLEXIBLE COUPLING
46-204	4" FLEXIBLE COUPLING
46-206	6" FLEXIBLE COUPLING
46-207	4"×3" FLEXIBLE COUPLING REDUCER

TEST PLUGS

Economy test plug with wing nut.



4" TEST PLUG
UPC: 626939469017

FEATURES

- Moulded rubber plug.
- Galvanized steel cap end and wing nut.
- Positive seal in soil, plastic or copper pipe.

PART #	PRODUCT NAME
46-900	3" TEST PLUG
46-901	4" TEST PLUG

19-401 HEAT GUN KIT

The Primegrip hot air welding gun can be used to weld all different types of thermoplastic materials for roofing and flooring applications, tarps, plastic fabrication, etc.



HEAT GUN KIT
UPC: 626939194018

FEATURES

- Air flow of 13.8 m³/hr and up to 700°C temperature.
- Includes heat gun, 20 mm standard flat welding nozzle, 40 mm standard flat welding nozzle, Primegrip 72-000 Silicone Roller (1"×1") and "T" Heating Element. Comes in a carrying case.

TECHNICAL SPECIFICATIONS

Rated Voltage	110V
Power	1600W
Air Volume	13.8 m ³ /hr
Air Pressure	3,000 Pa
Temperature Scope	40°C–700°C
Cylinder Diameter	32 mm
Noise	65 dB

HEAT GUN NOZZLES

Primegrip line of stainless steel hot air welding nozzles.



20 MM STANDARD NOZZLE
UPC: 626939194049



20 MM 90° NOZZLE
UPC: 626939194094



**5 MM NOZZLE WITH BRASS
ROLLER WELDING TIP**
UPC: 626939194131



40 MM 45° NOZZLE
UPC: 626939194186

PART #	PRODUCT NAME
19-404	20 MM STANDARD NOZZLE
19-405	5 MM STANDARD NOZZLE
19-406	40 MM STANDARD NOZZLE
19-407	5 MM SPEED WELDING NOZZLE
19-408	80 MM STANDARD NOZZLE
19-409	20 MM 90° NOZZLE
19-410	5 MM ROUND NOZZLE
19-411	5 MM×150 MM ROUND NOZZLE
19-412	20 MM×150 MM ROUND NOZZLE

PART #	PRODUCT NAME
19-413	5 MM NOZZLE WITH BRASS ROLLER WELDING TIP
19-414	3 MM / 4 MM / 5 MM ROUND SPEED WELDING NOZZLE
19-415	7×5×5 MM / 5.7×3.7×3.7 MM TRIANGLE SPEED WELDING NOZZLE
19-416	TACKING NOZZLE
19-417	20 MM 45° NOZZLE
19-418	40 MM 45° NOZZLE
19-500	RAPID NOZZLE FOR WALL COVERING
19-510	RAPID WELDING NOZZLE

19-512 HEAT GUN ELEMENT

110V replacement “T” heating element for heat gun.



HEAT GUN ELEMENT
UPC: 626939195121



HEAVY DUTY ROLLERS

Heavy duty steel roller for adhesive-backed membranes.



100 LB HEAVY DUTY ROLLER
UPC: 626939190157

FEATURES

- Rollers turn independently in opposite directions for sharp turns (90° or U-turns) easily without wrinkling or tearing membranes.
- Independently floating dual-rollers make rolling over irregular surface imperfections easier.
- Sturdy collapsible steel tubing handle.

PART #	PRODUCT NAME
19-012	16 LB HEAVY DUTY ROLLER
19-013	35 LB HEAVY DUTY ROLLER
19-014	75 LB HEAVY DUTY ROLLER
19-015	100 LB HEAVY DUTY ROLLER

19-020 EXTENDABLE ROLLER

Extends up to 27". The segmented rollers exert uniform pressure to smooth out uneven surfaces.



EXTENDABLE ROLLER
UPC: 626939190201

FEATURES

- Ideal for rolling TPO and roof membrane.
- 7½" wide segmented rollers.
- Handle adjusts 17"–27".
- Dual grip for easy maneuvering.

72-036 ERGONOMIC SILICONE ROLLER

Angled roller specially designed to minimize wrist fatigue.



ERGONOMIC SILICONE ROLLER
UPC: 626939720361

FEATURES

- Heat-resistant silicone seam roller.
- Used to compress roof membranes when effecting seal/joint.
- L-shaped offset fork reduces wrist fatigue.
- 1½" x 1¾" silicone roller, 4½" birch wood handle.

SILICONE ROLLERS

Primegrip offers an extensive line of silicone membrane seam rollers in a wide variety of sizes.



3½"×1¼" DOUBLE FORK SILICONE ROLLER
UPC: 626939720286

FEATURES

- Heat-resistant silicone seam roller.
- Used to compress roof membranes when effecting seal/joint.
- High quality bearings and birch wood handle.

PART #	PRODUCT NAME
72-000	1"×1" SINGLE FORK SILICONE ROLLER
72-001	1¼"×1¾" SINGLE FORK SILICONE ROLLER
72-002	2"×4" DOUBLE FORK SILICONE ROLLER
72-020	1"×1¼" SINGLE FORK SILICONE ROLLER
72-022	1¾"×1¼" SINGLE FORK SILICONE ROLLER
72-026	1"×1¼" DOUBLE HEAD SILICONE ROLLER
72-028	3½"×1¼" DOUBLE FORK SILICONE ROLLER

STEEL ROLLERS

Primegrip offers an extensive line of steel membrane seam rollers in a wide variety of sizes.



2"×4" DOUBLE FORK STEEL ROLLER
UPC: 626939720354

FEATURES

- Heavy duty steel seam roller.
- Used to compress roof membranes when effecting seal/joint.
- Solid double brass bearings, birch wood handle.

PART #	PRODUCT NAME
72-032	2"×2" SINGLE FORK STEEL ROLLER
72-033	2"×2" DOUBLE FORK STEEL ROLLER
72-034	2"×2" RADIUS EDGE STEEL ROLLER
72-035	2"×4" DOUBLE FORK STEEL ROLLER

72-030 2-IN-1 SILICONE/PENNY ROLLER

Double-end combination seam roller and penny roller.



2-IN-1 SILICONE/PENNY ROLLER
UPC: 626939720309

FEATURES

- Single fork with enclosed bearings.
- 1½"×1¾" silicone roller, 1⅛"×⅓" brass penny roller.
- 5" birch wood handle.

72-031 2-IN-1 SILICONE ROLLER/SEAM PROBE

Double-end combination seam roller and seam probe.



2-IN-1 SILICONE ROLLER/SEAM PROBE
UPC: 626939720316

FEATURES

- Single fork with enclosed bearings.
- 1½"×1¾" silicone roller, stainless seam probe.
- 5" birch wood handle.

72-049 STEEL CAMEL ROLLER

This innovative membrane roller features two sets of rollers on either end with a bridge-style steel handle.



STEEL CAMEL ROLLER
UPC: 626939720491

FEATURES

- Features front and rear guide aluminum wheels with 2 different widths.
- Work longer with less effort using the unique ergonomic handle.
- Ideal for PVC membranes and vinyl flooring.

72-010 SEAM PROBE

Small probing tool to check adhesion of membrane seams.



SEAM PROBE
UPC: 626939720101

FEATURES

- Heat-treated high carbon steel blade with rounded corners, minimizing chance for damage when inspecting welded seams.
- Angled blade for clearance for hands and knuckles.
- Lightweight and durable plastic handle.

THREADED ROLLERS

Threaded Rollers give you the option of attaching a pole to eliminate bending while welding membrane seams.



2"×4" THREADED SILICONE ROLLER
UPC: 626939720453

FEATURES

- Double bearing for smoothness when used with an extension pole.
- Extra strong carbon steel frame.
- Cushion-grip provides maximum comfort.
- Threaded end allows use with pole—less stress on the back and ability to apply more pressure.

72-013 FOLDABLE SEAM PROBE

Small folding probing tool to check adhesion of membrane seams.



FOLDABLE SEAM PROBE
UPC: 626939720132

FEATURES

- Zinc plated, hardened steel hook locks in place when open—folds securely into handle when closed.
- Strong plastic handle has finger grips and non-roll-away shape. Belt clip for carrying.
- Liner lock closure mechanism has oversized opening for easy fold-away.

PART #	PRODUCT NAME
72-045	2"×4" THREADED SILICONE ROLLER
72-046	2"×6" THREADED SILICONE ROLLER
72-047	2"×4" THREADED STEEL ROLLER
72-048	2"×6" THREADED STEEL ROLLER

NEOPRENE SQUEEGEES

Petroleum-resistant and flexible neoprene rubber blade with serrated edge.



30" NEOPRENE APPLICATOR SERRATED SQUEEGEE
UPC: 626939721214

FEATURES

- 16 Gauge plated steel frame.
- 2" high and 1/4" thick neoprene rubber blade.
- Equipped with a built-in scraper.
- Steel socket accepts a 1 1/8" tapered handle.
- Made in the USA.

PART #	PRODUCT NAME
72-120	24" NEOPRENE APPLICATOR SERRATED SQUEEGEE
72-121	30" NEOPRENE APPLICATOR SERRATED SQUEEGEE
72-122	36" NEOPRENE APPLICATOR SERRATED SQUEEGEE

SAHARA SQUEEGEES

The Sahara squeegee blade can be used for hot applications up to 478° F. Has a low reactivity with chemicals.



24" SAHARA FLAT SQUEEGEE
UPC: 626939721252

FEATURES

- 16 Gauge plated steel frame.
- 2" high and 1/4" thick neoprene rubber blade.
- Equipped with a built-in scraper.
- Steel socket accepts a 1 1/8" tapered handle.
- Made in the USA.

PART #	PRODUCT NAME
72-123	24" SAHARA SERRATED SQUEEGEE
72-124	18" SAHARA FLAT SQUEEGEE
72-125	24" SAHARA FLAT SQUEEGEE

MOP YARN

Cotton mop yarn bundles.



24" MOP YARN
UPC: 626939721054

FEATURES

- Economical and inexpensive.
- 100% cotton with good pick up.
- Each hank tied twice.
- Packed in 30 lb cartons.
- Uses 6' or 8' handles with bell adapter.

PART #	PRODUCT NAME
72-105	24" MOP YARN
72-106	30" MOP YARN

MOP ACCESSORIES

Accessories for mod bit mops. Heads and connectors to use with mop yarn as well as handles to create complete mops for spreading mod bit in commercial roofing applications.



PIN ADAPTER
UPC: 626939721009



MOP STEEL BELL ADAPTER
UPC: 626939721016



MOP COMPRESSION HEAD ADAPTER
UPC: 626939721023



MOP BELL HEAD
UPC: 626939721078



MOP HEAD WIRE CLIP
UPC: 626939721030

PART #	PRODUCT NAME	DESCRIPTION
72-100	Pin Adapter	Heavy gauge steel pin-head mop adapter. Attaches with 1/4"x2" bolts to 1 1/4" roller mop handle or pin mops, and to wood handle.
72-101	Mop Steel Bell Adapter	Staple-through mop bell holds yarn securely.
72-102	Mop Compression Head Adapter	Spring type compression head with thumb screw for easy adjustment.
72-103	Mop Head Wire Clip	4" staple holds yarn securely through mop bell.
72-107	Mop Bell Head	Bell head for mop.

ROUND TROWELS

Round-edged roofing trowels for mod bit applications.



2"×7" ROUND-EDGED TROWEL
UPC: 626939710034

FEATURES

- Wooden handle.
- Ideal flexibility and grip for mod bit applications.

PART #	PRODUCT NAME
71-002	2"×5½" ROUND-EDGED ROOFING TROWEL
71-003	2"×7" ROUND-EDGED ROOFING TROWEL

ROLL PULLERS

Roll Pullers allow roofers to pull a granular mod bit membrane roll while torching the application point.



EXTENDABLE ALUMINUM ROLL PULLER
UPC: 626939722075

FEATURES

- Durable lightweight construction.
- Comfortable cushion grip.

PART #	PRODUCT NAME
72-204	ROLL PULLER
72-206	ALUMINUM ROLL PULLER
72-207	EXTENDABLE ALUMINUM ROLL PULLER

71-005 2"×5" MARGIN TROWEL

Square blade roofing trowel for mod bit applications.



2"×5" MARGIN TROWEL
UPC: 626939710058

FEATURES

- Wooden handle.
- Ideal flexibility and grip for mod bit applications.
- Works as a 2" measuring tool for mod bit overlap margin.

71-006 ALUMINUM FLOAT

Aluminum float used to flatten mod bit layer.



ALUMINUM FLOAT
UPC: 626939710065

FEATURES

- Easy to clean aluminum construction.
- Balanced weight for even application.
- Wooden reinforced insert for heat resistance.

88-100
TORCH HANDLE

Brass trigger handle for propane torches.



TORCH HANDLE
UPC: 626939881000

FEATURES

- Ergonomic propane torch handle.
- Solid brass to withstand the workload.
- Gradually adjustable working flame.

88-105
ANTI-EXPLOSION REGULATOR

Pressure regulator for use with propane torches.



ANTI-EXPLOSION REGULATOR
UPC: 626939881055

FEATURES

- Anti-explosive system.
- Shut-off valve in case of gas leak.
- Aluminum cast body and 1/4" NPT brass fittings.
- CSA approved.

EXPRESS HANDLES

Handle with trigger and swivel attachment for propane torches.



BI-MATERIAL HANDLE
UPC: 818592010594

FEATURES

- Ergonomic propane torch handle.
- Gradually adjustable working flame.
- Swivel attachment for flexibility in movement.

88-106
ADJUSTABLE REGULATOR

Adjustable pressure regulator for use with propane torches.



ADJUSTABLE REGULATOR
UPC: 626939881062

FEATURES

- Adjustable valve up to 60 psi.
- Aluminum body and knob.
- 1/4" NPT brass fittings.

PART #	PRODUCT NAME
GE-620/US	BI-MATERIAL HANDLE
GE-640/US	METAL HANDLE

TORCH WANDS

Stainless steel torch wands compatible with all stainless steel torch heads.



24" TORCH WAND
UPC: 626939881093

FEATURES

- Stainless steel wand.
- Fits any Primegrip stainless steel head.

PART #	PRODUCT NAME
88-107	5" TORCH WAND
88-108	15" TORCH WAND
88-109	24" TORCH WAND

EXPRESS TYPE WANDS

Stainless steel and brass wands designed specially for Express torch heads.



600 MM EXPRESS TYPE WAND
UPC: 626939881321

FEATURES

- Stainless steel wand with brass fittings.
- Fits any Express burner.

PART #	PRODUCT NAME
88-130	130 MM E-TYPE TORCH WAND
88-131	400 MM E-TYPE TORCH WAND
88-132	600 MM E-TYPE TORCH WAND

HYBRID WANDS

Stainless steel torch wands compatible with all titanium torch heads.



24" HYBRID TORCH WAND
UPC: 626939881277

FEATURES

- Stainless steel wand.
- Fits any Primegrip titanium head.

PART #	PRODUCT NAME
88-125	5" HYBRID TORCH WAND
88-126	15" HYBRID TORCH WAND
88-127	24" HYBRID TORCH WAND
88-128	20" HYBRID TORCH WAND

SOPREMA TYPE WANDS

Stainless steel and brass wands designed specially for Soprema torch heads.



24" S-TYPE TORCH WAND
UPC: 626939881352

FEATURES

- Stainless steel wand with brass fittings.
- Fits any Soprema burner.

PART #	PRODUCT NAME
88-133	5" S-TYPE TORCH WAND
88-134	15" S-TYPE TORCH WAND
88-135	24" S-TYPE TORCH WAND

STAINLESS TORCH HEADS

Stainless steel torch head.



45 MM STAINLESS TORCH HEAD
UPC: 626939881215

FEATURES

- Stainless steel for long-lasting durability.
- Cost-effective alternative to titanium torch heads.

PART #	PRODUCT NAME
88-120	35 MM STAINLESS TORCH HEAD (150,000 BTU)
88-121	45 MM STAINLESS TORCH HEAD (250,000 BTU)
88-122	55 MM STAINLESS TORCH HEAD (400,000 BTU)
88-123	65 MM STAINLESS TORCH HEAD (500,000 BTU)

TITANIUM TORCH HEADS

Titanium torch heads made to last extra long.



60 MM TITANIUM TORCH HEAD
UPC: 626939883011

FEATURES

- Cool down rapidly.
- Extremely lightweight.

PART #	PRODUCT NAME
88-300	50 MM TITANIUM TORCH HEAD (400,000 BTU)
88-301	60 MM TITANIUM TORCH HEAD (500,000 BTU)
88-302	70 MM TITANIUM TORCH HEAD (550,000 BTU)

EXPRESS TORCH HEADS

Titanium torch head designed for professional roofing, pavement and road repairs.



70 MM EXPRESS TITANIUM TORCH HEAD
UPC: 818592011119

FEATURES

- Durable and ergonomic.
- Lightweight with high heat output.

PART #	PRODUCT NAME
GE-50T	50 MM EXPRESS TITANIUM TORCH HEAD (184,000 BTU)
GE-100T	60 MM EXPRESS TITANIUM TORCH HEAD (348,000 BTU)
GE-150T	70 MM EXPRESS TITANIUM TORCH HEAD (511,500 BTU)

88-413 SINGLE FLINT SPARK LIGHTER

The professional choice for lighting propane and acetylene torches.



SINGLE FLINT SPARK LIGHTER
UPC: 626939884131

FEATURES

- Durable spring steel handle with corrosion resistant finish.
- Carbon steel striker.

PROPANE HOSES

UL Listed and CSA approved propane hose.



25' PROPANE HOSE
UPC: 626939884155

FEATURES

- Durable and weather resistant.
- 1/4" NPT brass fittings on both ends.

PART #	PRODUCT NAME
88-415	25' PROPANE HOSE
88-416	50' PROPANE HOSE
88-417	100' PROPANE HOSE

88-500 QUICK CONNECT COUPLER SET

Quick connect coupler set for low-pressure propane systems.



QUICK CONNECT COUPLER SET
UPC: 626939885008

FEATURES

- Convenient connect/disconnect method.
- Easy to install.
- Rated to 60 psi.

88-402 STAINLESS STEEL TORCH HOLDER

Small bracket that attaches to propane torch to hold it up when it is not in use.



TORCH HOLDER
UPC: 626939884025

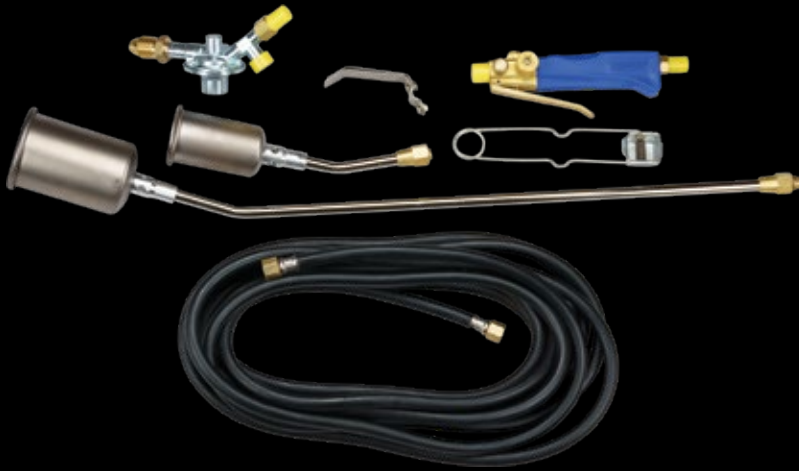
FEATURES

- Durable stainless steel construction.
- Small and lightweight.
- Easy installation.



TORCH KITS

Primegrip torch kits offer complete sets of tools needed for mod bit applications—handle, regulator, wand, torch head and hose. We even include torch holders and a spark lighter—all you need to start the job is propane.



ULTRA-LITE TITANIUM TORCH KIT
UPC: 626939889020

PART #	PRODUCT NAME	88-220 TITANIUM DETAIL TORCH KIT	88-221 TITANIUM FIELD TORCH KIT	88-900 FIRE DRAGON TORCH KIT	88-902 ULTRA-LITE TITANIUM TORCH KIT
88-100	TORCH HANDLE	✓	✓	✓	✓
88-106	ADJUSTABLE TORCH REGULATOR	✓	✓	✓	✓
88-107	5" TORCH WAND			✓	
88-109	24" TORCH WAND			✓	
88-125	5" HYBRID TORCH WAND	✓			✓
88-127	24" HYBRID TORCH WAND		✓		✓
88-121	45 MM TORCH HEAD			✓	
88-123	65 MM TORCH HEAD			✓	
88-300	50 MM TITANIUM TORCH HEAD	✓			✓
88-302	70 MM TITANIUM TORCH HEAD		✓		✓
88-500	QUICK CONNECT COUPLER SET	✓	✓		
88-415	25' PROPANE HOSE	✓	✓	✓	✓
88-413	SINGLE FLINT SPARK LIGHTER				✓
88-402	2xSTAINLESS STEEL TORCH HOLDER	✓	✓	✓	✓

70-001 CAST ALUMINUM DIPPER

Aluminum dipper for flat roofing.



CAST ALUMINUM DIPPER
UPC: 626939700011

70-004 GRAVEL PUSHER

Aluminum gravel pusher to spread gravel evenly.



GRAVEL PUSHER
UPC: 626939700042

72-110 ASPHALT SKIMMER

Kettle skimmer used to skim asphalt.



ASPHALT SKIMMER
UPC: 626939721108

FEATURES

- 12"×2" expanded steel screen, reinforced edges.
- 60" handle to remove debris from asphalt kettles.
- Prevents kettle fires.

72-200 PIGTAIL HOOK

Durable pigtail hook for safe and convenient connections with any bucket.



PIGTAIL HOOK
UPC: 626939722006

FEATURES

- Helps reduce accidents.
- Bucket hook won't come off slack rope.
- Easily manipulated.

72-202 12" GINWHEEL WITH HOOK

All purpose gin wheel.

FEATURES

- Highest quality die-cast aluminum wheel.
- Maintenance-free bearings and all-steel framework.
- Heavy-duty forged swivel hook with safety clip.
- Use with ¾" rope only.



12" GINWHEEL WITH HOOK
UPC: 626939722020

70-105 RIP CART

A demolition tool that allows roofers to make cuts without hunching or crawling.



RIP CART
UPC: 626939701056

FEATURES

- Depth guide allows adjustment to 4 settings: 1, 2, 3 layer, or the entire roof deck and fine adjustment for more precise changes.
- Small wheels stabilize the Rip Cart for a wide variety of cuts.
- The primary front wheel acts as a perfect guide when cutting ridge vent openings.
- Accepts most contractor grade circular saws.
- Collapsible handle for easy storage.

03-520 FIRST STAGE HAND SEAMER

Used to make the first bend in locking the leg on the metal standing seam.



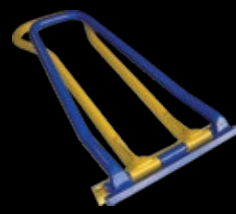
FIRST STAGE HAND SEAMER
UPC: 626939035205

FEATURES

- Bends up to 24 gauge metal.
- Size and lightweight design enables vertical and horizontal seam locking.
- For seams 1/2" across and 3/8" on the down leg.
- Works on 1" and 1 1/2" high standing seams.
- Painted powder-coated finish for durability.

03-521 FINISHING HAND SEAMER

Designed to be used in conjunction with First Stage Hand Seamer to close the second bend of a double standing seam.



FINISHING HAND SEAMER
UPC: 626939035212

FEATURES

- Finishes second bend of the double standing seam.
- For seams measuring 1/2" across on the top leg.
- Ergonomic design provides excellent comfort.

FOLDING TOOLS

Designed as two steel plates welded together with slits running along the length. Perfect for 3/8" and 1" bends.



18" FOLDING TOOL
UPC: 626939035335

FEATURES

- Easy-to-use folding mechanism for metal sheets.
- Handy sight holes assure proper depth alignment.
- 3/8" and 1" bend depths.

PART #	PRODUCT NAME
03-532	12" FOLDING TOOL
03-533	18" FOLDING TOOL

FORGED ALUMINUM SEAMERS

For making clean and accurate bends, seams and folds or for flattening and straightening metal sheets.



6" FORGED HAND SEAMER
UPC: 626939035267

FEATURES

- Bowed die-cast aluminum jaws provide firm and even hold.
- 1/4" jaw depth increments, maximum 2" bend depth.
- Rust-resistant nickel plating. Contoured grip.

PART #	PRODUCT NAME
03-525	3" FORGED HAND SEAMER
03-526	6" FORGED HAND SEAMER
03-527	9" FORGED HAND SEAMER

03-535 3" HAND SEAMER

Drop-forged steel seamer for sheet metal applications.



3" HAND SEAMER
UPC: 626939035359

FEATURES

- 1" bend depth.
- Useful for thicker gauge material.
- High quality drop-forged steel.

03-537 3" CHROME SEAMER

Steel seamer for sheet metal applications. Chrome coated jaws for rust protection.



3" CHROME SEAMER
UPC: 626939035373

FEATURES

- 1" bend depth.
- Useful for thicker gauge material.
- High quality drop-forged steel.
- Double layered and non-slip handles.

DOUBLE-LAYERED SEAMERS

Professional series hand seamers with comfortable double-layered non-slip handles and long lasting heat-treated steel jaws.



1"×3" HAND SEAMER
UPC: 626939035366



1"×6" HAND SEAMER
UPC: 626939035397



1"×9" HAND SEAMER
UPC: 626939035403



3"×6" HAND SEAMER
UPC: 626939035472

FEATURES

- Useful for thicker gauge material.
- Seamer jaw does not lose strength—no springs!
- High quality drop-forged steel.
- Fully heat-treated and tempered.
- Double layered and non-slip handles.

PART #	PRODUCT NAME
03-536	1"×3" HAND SEAMER
03-539	1"×6" HAND SEAMER
03-540	1"×9" HAND SEAMER
03-541	1"×12" HAND SEAMER
03-546	2"×6" HAND SEAMER
03-547	3"×6" HAND SEAMER

03-542 180° CLINCHER

Clinching pliers for all kinds of sheet metal applications.



180° CLINCHER
UPC: 626939035427

FEATURES

- High quality, heavy duty forged tools.
- Precoated handles.
- Manufactured to precise standards.

03-543 45° CLINCHER

Clinching pliers for all kinds of sheet metal applications.



180° CLINCHER
UPC: 626939035434

FEATURES

- High quality, heavy duty forged tools.
- Precoated handles.
- Manufactured to precise standards.
- Provides more leverage than a straight pair of tongs.

03-544 90° CLINCHER

Clinching pliers for all kinds of sheet metal applications.



90° CLINCHER
UPC: 626939035441

FEATURES

- High quality, heavy duty forged tools.
- Precoated handles.
- Manufactured to precise standards.
- Useful for hard to reach bends.

EXTENSION BIT HOLDERS

Extra-long extended driver for hard to reach areas.



12" BIT HOLDER
UPC: 626939186037

FEATURES

- Outer sleeve allows for holding and directing the tool without any discomfort.
- Magnetic, low profile quick release bit holder.
- Auto locking drive.

PART #	PRODUCT NAME
18-600	2¼" QUICK CONNECT EXTENSION BIT HOLDER
18-601	3" QUICK CONNECT EXTENSION BIT HOLDER
18-602	6" QUICK CONNECT EXTENSION BIT HOLDER
18-603	12" QUICK CONNECT EXTENSION BIT HOLDER
18-604	24" QUICK CONNECT EXTENSION BIT HOLDER

18-916 6-IN-1 STUBBY SCREWDRIVER

Ideal screwdriver for the kitchen drawer and superb for close-quarters jobs.



6-IN-1 STUBBY SCREWDRIVER
UPC: 626939189168

FEATURES

- Slimmer handle than standard drivers.
- High-strength magnet holds bit and screw securely.
- Bits are ideal for use in drills and power drivers (power-rated ¼" hex, 1.3" long).
- Stores 5 bits in handle plus 1 in shaft.

18-917 7-IN-1 SCREWDRIVER

Full size multi-bit screwdriver for professional or home use.



7-IN-1 SCREWDRIVER
UPC: 626939189175

FEATURES

- Slim handle for maximum comfort and torque; no moving parts to break (or lose).
- Anodized aluminum alloy shank.
- Bits are ideal for use in drills and power drivers (power-rated ⅜" hex, 2" long).
- Stores 6 bits in handle plus 1 in shaft.



AUTO IGNITION SOLDERING IRON

Soldering iron for roofers with piezo ignition, orientable iron tip and handle with swivel attachment.



AUTO IGNITION 235g TIP
UPC: 818592010136

FEATURES

- Automatic ignition and silent operation.
- Adjustable tip between 0 and 360°, fast temperature attainment $\pm 600^{\circ}\text{C}$ (1,112°F).
- Ergonomic handle with swivel attachment.
- Compact cast iron body with anticorrosive coating.
- Gas flow 94 g/hr at 2 bar.
- Spring-loaded 2 position foot.

PART #	PRODUCT NAME
GE-367/8US	AUTO IGNITION SOLDERING IRON—235g TIP
GE-367/9US	AUTO IGNITION SOLDERING IRON—315g TIP

GE-364 HOSELESS SOLDERING IRON

Hoseless soldering iron for roofers with piezo ignition and cartridge, supplied with iron turbo tip.



HOSELESS SOLDERING IRON
UPC: 818592010129

FEATURES

- Suitable for details.
- Automatic ignition and silent operation.
- Running time 45 to 70 minutes.
- Maximum gas flow 94 g/hr at 2 bar.
- Adjustable tip between 0° and 360°

GE-6364 HOSELESS SOLDERING IRON KIT

Hoseless soldering iron kit for roofers with piezo ignition and cartridge, supplied with iron turbo tip, flux and gas.



HOSELESS SOLDERING IRON KIT

FEATURES

- GE-364 Hoseless Soldering Iron.
- 2x60g gas cartridges (butane + propane + 15% propene).
- 100 ml bottle of flux.
- 1 nozzle.

SOLDERING TIPS

Iron-copper tips for use with soldering irons.



315g STANDARD TIP
UPC: 626939886791

FEATURES

- 220g Diamond Soldering Tip—90 mm×20 mm
- 315g Standard Soldering Tip—45 mm×5 mm
- 220g Turbo Soldering Tip—35 mm×3.5 mm

PART #	PRODUCT NAME
88-672	220g DIAMOND SOLDERING TIP
88-679	315g STANDARD SOLDERING TIP
88-778	220g TURBO SOLDERING TIP

33-641 HAND NOTCHER

This sheet metal hand tool makes a 30° V corner notch for hand fabricating rectangular metal duct work.



HAND NOTCHER
UPC: 626939336418

FEATURES

- All steel construction and forged cutting jaw.
- Non-slip cushion grips and spring loaded handles with locking jaw.

33-700 SHEET METAL CRIMPER

Perfect crimps for tighter fitting, leakproof connections.



SHEET METAL CRIMPER
UPC: 626939337002

FEATURES

- Non-slip vinyl cushion grip.
- All steel construction.

SNAP LOCK PUNCH

Makes tabs in the cut edge of a siding panel used as a finishing course at the top of a wall or below a window.



SNAP LOCK PUNCH
UPC: 626939336401

FEATURES

- All steel construction. Forged cutting jaw holds edge longer and assures burr free cut.
- Punch impression spaced $\frac{3}{8}$ " from edge of metal.
- Non-slip vinyl cushion grips for comfortable grip.

PART #	PRODUCT NAME
33-640	SNAP LOCK PUNCH
33-643	SNAP LOCK PUNCH—EASY HANDLE

SIDING REMOVER

This compact siding removal tool combines the comfort and added leverage of an easy-to-grasp handle with the smooth unlocking motion of a burr free hook.



SIDING REMOVER—STRAIGHT HANDLE
UPC: 626939361021

FEATURES

- Angled blade for wrist and knuckle protection.
- Blade finish prevents sharp hook from producing shavings or cutting vinyl material.
- Non-slip textured ergonomic handle.
- Durable spring steel construction.

PART #	PRODUCT NAME
36-101	SIDING REMOVER—CURVED HANDLE
36-102	SIDING REMOVER—STRAIGHT HANDLE

PT-SA903B SIDING GAUGE—PAIR

Gauges and supports cement-board siding for one-person installation with virtually no layout time. Adjustable at $\frac{1}{4}$ " increments for 4"–8" siding reveals.



SIDING GAUGE
UPC: 645646903010

FEATURES

- Won't scratch or mar pre-painted siding.
- Friction-Cam mechanism supports full 12' cement-board siding lengths.
- For use with $\frac{5}{16}$ " fiber-cement siding products, including James Hardie's updated HZ5 series with new "eased" drip-edge profile.

PT-SA904 GABLE SCRIBE

This 30" cutting guide easily captures gable angles (0° – 90°) and transfers to siding.



GABLE SCRIBE
UPC: 645646904000

FEATURES

- Guide slot for use with dust-free Snapper Shears.
- Can be used for left or right hand angles.
- Obtain professionally finished cuts that eliminate unsightly gaps—cut only once.
- Lightweight machined aluminum and steel.

PT-SS404 FIBER CEMENT SIDING SHEAR

Cuts fiber-cement siding up to $\frac{5}{16}$ " thick.



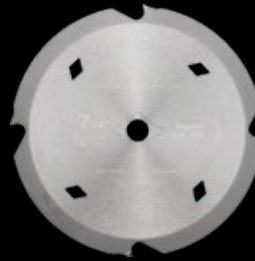
FIBER CEMENT SIDING SHEAR
UPC: 645646400007

FEATURES

- Smooth, fast, and dust-free operation.
- Replaceable, reversible tool steel blades.
- Built with a contractor grade 6.5 amp motor.

HARDIBOARD BLADES

Circular saw blade designed for use with miter saws.



7 $\frac{1}{4}$ "x4T HARDIBOARD BLADE
UPC: 626939228805

FEATURES

- Polycrystalline diamond technology blade that provides durability and longer cutting life.
- Ensures over 1,000 cuts per blade.
- Self-sharpening for precise, dust-reducing cuts.
- Ideal for multi-plank cutting, ripping, cross-cutting and mitering in fiber cement boards and siding.

PART #	PRODUCT NAME
22-880	7 $\frac{1}{4}$ "x4T HARDIBOARD BLADE
22-881	10"x6T HARDIBOARD BLADE

AVIATION SNIPS

Ideal snips for cutting light stock.



STRAIGHT CUT SNIPS
UPC: 626939363179



LEFT CUT SNIPS
UPC: 626939363186



RIGHT CUT SNIPS
UPC: 626939363193

FEATURES

- High-quality chrome-vanadium alloy steel.
- Rubber comfort grip handles and safety latch.
- Non-slip serrated jaws for efficient cutting.
- Spring action for fast, effortless feed.
- Standardized handle colours are easy to identify.

PART #	PRODUCT NAME
36-317	STRAIGHT CUT AVIATION SNIPS
36-318	LEFT CUT AVIATION SNIPS
36-319	RIGHT CUT AVIATION SNIPS

36-320

DRILL-OPERATED AVIATION SNIPS

Converts corded or cordless drill into aviation snips. Has applications in metal roofing, building panels, metal duct work and sheet metal. Comes as a complete kit.

**DRILL-OPERATED AVIATION SNIPS**

UPC: 626939363209

FEATURES

- Aviation snip attachment
- 1 nut, 3 screws, 2 drill clamps.
- 1 soft-grip handle.
- 5 mm hex key wrench, 10 mm combination wrench.

ALUMINUM SCISSORS

Ideal for cutting sheet metal, roofing materials, carpet, vinyl, plastic, canvas and other similar materials.

**12" ALUMINUM SCISSORS**

UPC: 626939363742

FEATURES

- Heavy-duty scissors.
- Replaceable blades.

36-373

12" ALUMINUM COMPOUND SCISSORS

Ideal for cutting sheet metal, roofing materials, carpet, vinyl, plastic, canvas and other similar materials.

**12" ALUMINUM COMPOUND SCISSORS**

UPC: 626939363735

FEATURES

- Standard-duty scissors.
- Ergonomic handle.

TINSNIPS

Ideal for cutting low carbon cold-rolled steel. Cuts straight and wide curves when trimming light gauge stock.

**12" TINSNIPS**

UPC: 626939363544

FEATURES

- Flat inside edge face guides tool along a straight line.
- Cushion grip for comfort.
- Hand-edged hot drop-forged steel blades.
- Long lasting and rust-resistant.

PART #	PRODUCT NAME
36-374	12" ALUMINUM SCISSORS
36-375	14" ALUMINUM SCISSORS
36-384	12" REPLACEMENT BLADE (PAIR)
36-385	14" REPLACEMENT BLADE (PAIR)

PART #	PRODUCT NAME
36-344	12½" TINSNIPS
36-352	8" TINSNIPS
36-353	10" TINSNIPS
36-354	12" TINSNIPS

36-480

8" MULTI-PURPOSE SHEARS

Ideal for cutting sheet metal and leather.



8" MULTI-PURPOSE SHEARS
UPC: 626939364800

FEATURES

- Stainless steel serrated blade.
- Lightweight and durable anti-slip handles for a comfortable grip.

36-481

8" MULTI-FUNCTION SCISSORS

Ideal for cutting sheet metal, plastic and leather.



8" MULTI-FUNCTION SCISSORS
UPC: 626939364817

FEATURES

- Stainless steel serrated blade.
- Includes box cutter, wire cutter, nut cracker and jar opener.

36-482

10" MULTI-PURPOSE OFFSET SHEARS

Ideal for cutting sheet metal, plastic and leather.



10" MULTI-PURPOSE OFFSET SHEARS
UPC: 626939364824

FEATURES

- Stainless steel serrated blade.
- Ergonomic handle.
- Adjustable range blade.

45-165

ALUMINUM FOAM GUN

Lightweight foam gun for insulation applications.



ALUMINUM FOAM GUN
UPC: 626939451654

FEATURES

- Excellent bead control.
- Professional results.
- Lightweight body.

04-820
SLATE HAMMER

All-in-1 slate hammer—a lightweight, multi-purpose tool that can trim slate, drive or pull nails and punch holes.



SLATE HAMMER
UPC: 626939048205

FEATURES

- Milled hammer face reduces chances of missing nails.
- Spike for punching holes and weakening slate. Nail puller for removing nails.
- Beveled shank for slate trimming.
- Forged medium carbon steel head with satin polish.
- Nylon and thermoplastic rubber handle.

09-272
SLATE RIPPER

Innovative tool specially designed for slate removal.



SLATE RIPPER
UPC: 626939092727

FEATURES

- Thin mid-section for sliding under slates without breaking.
- Reinforced handle allows harder hammer strikes for removing slate nails effortlessly.
- 24" blade length makes this the best ripper for longer nail removal.

09-273
SLATE RIPPER & TRIMMER

This slate cutter makes straight, as well as concave and convex cuts, leaving a professional chamfered edge.



SLATE RIPPER & TRIMMER
UPC: 626939092734

FEATURES

- Adept at cutting smaller pieces to be fitted around chimney or valley of roof.
- The tough, heat treated blade and the punch are removable and can be reordered.
- The variable pitch of the curved blade gives excellent "bite" on the toughest slate varieties up to 3/8" thick.

09-275
STRAIGHT SLATE STAKE

Used in conjunction with a slate hammer to trim slate.



STRAIGHT SLATE STAKE
UPC: 626939092758

FEATURES

- Flat bar stock, welded construction.
- Offers forged pointed end to be driven into a wooden surface, therefore providing stable edge for trimming slate with a slate hammer.
- 20" wide with 8" stake.

06-860

HAND SPUDDER

Ideal for removing slate roofing.



HAND SPUDDER
UPC: 626939068609

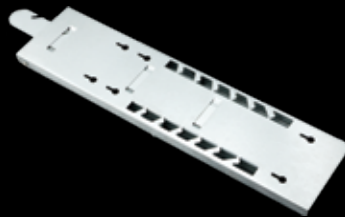
FEATURES

- Also removes gravel and slag, old roofing and fastenings.
- Pre-hardened blades for improved wear resistance.
- Quick change replacement blades.
- All steel construction.

73-320

SLATE ROOFING BRACKET

An all-around, full capacity roofing bracket for 2"×12" planks, made specifically for on and over slate work.



SLATE ROOFING BRACKET
UPC: 626939733200

FEATURES

- Adjusts and locks to six positions to fit 33°, 38°, 43°, 48°, 50°, 55° pitch.
- Galvanized steel for strength, safety and durability.
- Folds compactly for easy storage.
- Capacity: one person per 8' of staging plus 40 lb.
- Complies with OSHA regulations.

23-408

D-MINUS ANCHOR KIT

Economical fall arrest anchor. Ultra low profile, specified for asphalt shingle roofing. Used for new construction, reroof or retrofitting onto existing roofs.



D-MINUS ANCHOR KIT
UPC: 786158107521

FEATURES

- Installs with just 6 fasteners in 5 certified pre-engineered fastener options.
- Fall Indicator stem warns of in-service loading.
- Paintable to match any roofing color.
- Accepts all 3,600 lb gate strength connectors.
- OSHA 5,000 lb rated.

23-413

REUSABLE ANCHOR

Used to provide temporary, reusable roof anchorage for residential and construction applications. Approved for use on both wood and metal roofing.



REUSABLE ANCHOR
UPC: 626939234134

FEATURES

- 14 Gauge reusable steel anchor with clear chromate finish.
- Meets OSHA 1926.502(d)(16)(v) requirements.
- Must be used only with approved components that limit the fall arresting forces to 900 lb or less.
- Support structure at anchor site must be capable of supporting a 5,000 lb static load.

LITE-ANCHORS

Designed for use as anchorage connector for personal fall protection in a travel restraint system on sloped and flat wooden roofs or floor structures.



DUAL PLATE ANCHOR
UPC: 626939234127

FEATURES

- Easy installation. Adjustable to any roof pitch.
- CSA approved D-Ring (5000 lb test minimum).
- Meets or exceeds OSHA, ANSI and CSA standards.
- Constructed of high strength 3/16" thick aluminum.
- Lightweight anchor and heavy duty polyester web.

PART #	PRODUCT NAME
23-411	SINGLE PLATE LITE-ANCHOR
23-412	DUAL PLATE LITE-ANCHOR

HEAVY DUTY ANCHORS

Reusable, easy to install anchorage connector with dual plates.



DUAL PLATE ANCHOR
UPC: 626939234165

FEATURES

- Compatible with both wood and steel substrates.
- Special hole configuration for a safer and more convenient installation of fasteners.
- Can be installed with screws or duplex nails.
- Fits up to 12/12 roof pitch.
- Fasteners provided.

PART #	PRODUCT NAME
23-415	SINGLE PLATE HEAVY DUTY ANCHOR
23-416	DUAL PLATE HEAVY DUTY ANCHOR

23-SA3006 MAX HINGED ROOF ANCHOR

Temporary reusable anchor point for use on wood framed structures that can be mounted at the ridge or in the field.



MAX HINGED ROOF ANCHOR
UPC: 786158300604

FEATURES

- 11 gauge di-chromate steel.
- Industry standard design with hinged D-ring.
- Use up to a 20/12 pitch or flat on the deck.
- Rated for OSHA 5,000 lb fall arrest.
- 12 duplex nails included.

23-SA3013D HINGE-2 ANCHOR

Reusable anchor that can be installed with nails or screws for fall arrest or fall restraint. Use vertically on a wall system when fastened with WS series screws.



HINGE-2 ANCHOR
UPC: 786158301304

FEATURES

- Adjustable from flat to 24/12 pitch.
- Heavy-duty 11-gauge steel.
- Durable Dacromet finish.
- Dual size fastener holes for more options.
- 36 duplex nails included.

RETROFIT ANCHORS

Designed to be installed by removing only a portion of the ridge. Conventional flashing system not required.



DOUBLE RING ANCHOR
UPC: 626939234189

FEATURES

- Works with vented & non-vented ridge caps.
- Perfect for asphalt, wood & metal roofs.
- Includes a butyl strip for waterproof seal.
- Low profile design can be painted to match roof.
- Complies with all OSHA and ANSI standards.
- Includes stainless steel fasteners.

PART #	PRODUCT NAME
23-417	SINGLE RING RETROFIT ANCHOR
23-418	DOUBLE RING RETROFIT ANCHOR

23-SA2813 RS-10 ANCHOR

For permanent or temporary use on the roof, wall and floor. Great for composition roofing retrofitting on hip ridges, shed roofs and other non-standard areas.



RS-10 ANCHOR
UPC: 786158281309

FEATURES

- Perfect for asphalt shingle roofing and wall use.
- Use on hip corners and ridgelines.
- Permanent low profile design.
- 430 stainless steel construction. Fasteners included.
- Rated for 5,000 lb OSHA fall arrest.
- Maximum worker capacity 340 lb.

23-SA2816 RS-20 ANCHOR

Permanent roof anchor for tile, slate, wood and synthetic roofing materials. The 20" strap allows adjustment of D-ring reveal for the roofing material. D-ring portion can be physically bent up and over the tile or slate for flat fit.



RS-20 ANCHOR
UPC: 786158281606

FEATURES

- Permanent or temporary use on roof, floor or wall.
- Easy to install and includes all fasteners.
- Rated for 5,000 lb OSHA fall arrest.
- 430 stainless steel construction.
- Maximum worker capacity 340 lb.

23-426 CLAW TYPE 2×4 ANCHOR

Installed at the framing stage, the patented design is flashing into the roofing membrane as a permanent fixture that has the added benefit of providing anchorage for other trades.



CLAW TYPE 2×4 ANCHOR
UPC: 626939234264

FEATURES

- Fully engineered fall arrest anchor.
- 100% waterproof with dual flashing system.
- Factory supplied attachment hardware.
- Ideal for most types of roofing material.
- Permanent—stays for the life of the structure.

23-SA1006
ARS 2x8 ANCHOR

Installed at the framing stage, the design is flashing into the roofing membrane as a permanent fixture.



ARS 2x8 ANCHOR
 UPC: 786158100600

FEATURES

- Fully engineered fall arrest anchor.
- 100% waterproof with dual flashing system.
- Factory supplied attachment hardware.
- Ideal for most types of roofing material.

23-SA2801
ARS 2x8 ANCHOR KIT

Includes a 14 gauge stainless steel anchor, santoprene flashing, stem cover, tether strap and bolt kit.



ARS 2x8 ANCHOR KIT
 UPC: 786158280104

FEATURES

- Permanent roof anchor.
- Rated for fall arrest.
- For use on 2x4 – 2x12 trusses.
- Asphalt shingle flashing.

23-SA2810
EPDM, STEM COVER & TETHER KIT

The EPDM metal roof flashing base specifically designed to flash the ARS Series of anchors on standing seam and corrugated metal roofing. The flashing system consists of a medium grey EPDM base flashing with aluminum reinforced edge, a gray stem cover and a tether strap.



EPDM, STEM COVER & TETHER KIT
 UPC: 786158281002

FEATURES

- 8"x8" EPDM Flashing with 3" stem height.
- Grey stem cover. Tether strap.
- Flashing has ribs on bottom for butyl type sealant.
- Conforms to various roof profiles for weather tight fit.

24" O.C. x 48" SAFETY BARS

The only product on the market for open framing fall protection offering OSHA compliance during the most difficult time for fall protection. Provides sturdy tie-off point for two workers and spaces the trusses at 24" centers.



2x4/2x6 COMBINATION BAR
 UPC: 786158101201

FEATURES

- Can be used with SRL or vertical lifelines.
- Attached with quick release detent pins.
- Powder coated bright red.
- Bracing requirements supplied with anchor.
- Available for 2x4 or 2x6 trusses.

PART #	PRODUCT NAME
23-SA1010	2x4 SAFETY BAR
23-SA1011	2x6 SAFETY BAR
23-SA1012	2x4/2x6 COMBINATION BAR

TRUSS BAR ANCHOR

The Truss Bar is for builders who want to provide an anchor for their trades but do not want it to stay permanently due to liability concerns.



DETENT PIN TYPE ANCHOR
UPC: 786158283204

FEATURES

- 2 person open framing tie-off anchor.
- Includes truss bar, 2 tie-off straps and fasteners.
- Semi-permanent cut off straps when done.
- Detent pins for reusable application.

PART #	PRODUCT NAME
23-SA2831	BOLT-ON TYPE TRUSS BAR ANCHOR
23-SA2832	DETENT PIN TYPE TRUSS BAR ANCHOR

DETENT PINS

Stainless steel detent pins for temporary/reusable anchor points including the Safety Bar, Movable ARS, Floor Joist Safety Bar and Truss Bar.



2 7/8" DETENT PIN WITH 6" SHOCK TETHER
UPC: 786158201505

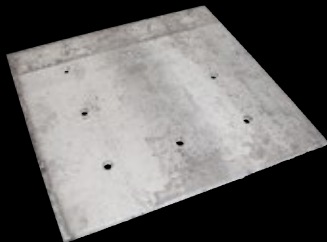
FEATURES

- Heavy duty elastic shock cord strap.
- Fall arrest rating.
- Temporary installation.
- Comes with a 6" shock tether.

PART #	PRODUCT NAME
23-SA2015	2 7/8" DETENT PIN WITH 6" SHOCK TETHER
23-SA2016	4 3/8" DETENT PIN WITH 6" SHOCK TETHER
23-SA2017	6 3/8" DETENT PIN WITH 6" SHOCK TETHER

23-SA1031 CRA BACKING PLATE

Backing plate for 23-1032 or 23-1033 commercial roof anchors. Used to sandwich anchors onto roof structure.



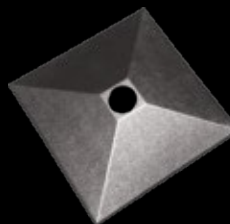
CRA BACKING PLATE
UPC: 786158103106

FEATURES

- Mild steel construction.
- Holes mirror those of commercial roof anchors.

23-SA2000 ABS FLASHING BASE

3" high ABS cover for commercial roof anchors and fasteners.



ABS FLASHING BASE
UPC: 786158200003

FEATURES

- Designed to cover commercial anchor fasteners.
- For use on commercial roof anchors with 16" baseplates and 3" diameter risers.

COMMERCIAL ROOF ANCHORS

Durable, practical and low-maintenance anchor point designed for commercial roof applications and flat roofs.



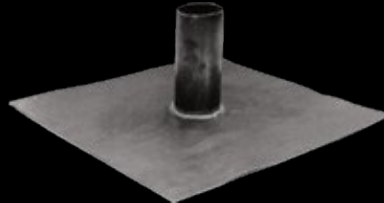
18" CRA WITH RISER & PASS THROUGH TOP
UPC: 786158103328

FEATURES

- Manufactured from high strength steel with a galvanized or powder-coated finish.
- Can be utilized as a horizontal lifeline anchor.
- Mounts to wood, steel or concrete decking.
- Includes all fasteners.

23-SA2004 LEAD FLASHING BASE

Lead flashing base for commercial roof anchors.



LEAD FLASHING BASE
UPC: 786158200409

FEATURES

- Installs on flat or low-pitched roofs.
- For use on all commercial roof anchors with 3" diameter risers.

PART #	PRODUCT NAME
23-1032	12" CRA WITH RISER
23-1033	18" CRA WITH RISER
23-1033P	18" CRA WITH RISER & PASS THROUGH TOP



23-SA2008F CRA CAP LEASH

18" bungee strap.



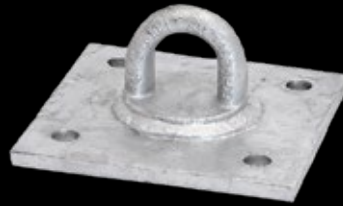
CRA CAP LEASH
UPC: 786158200867

FEATURES

- For use on all commercial roof anchors.
- Tethers stem cover to EPDM flashing base.

23-SA1038 D-PLATE CRA

Low-rise D-plate anchor rated for fall arrest.



D-PLATE CRA
UPC: 786158103809

FEATURES

- Powder-coated.
- Permanent anchor point for walls.
- Use with 23-SA1039 D-Plate Backer Plate.
- Fasteners not included.

23-SA2022 CRA INSTALLATION SCREW

#14 screw for commercial roof anchor installation.



CRA INSTALLATION SCREW
UPC: 786158202205

FEATURES

- Installs in wood or steel decking.
- Fall arrest rating.
- Permanent installation.
- 2½" length.

23-SA1039 D-PLATE BACKING

Backer plate for 23-SA1038 D-Plate Commercial Roof Anchor.



D-PLATE BACKING
UPC: 786158103908

FEATURES

- Powder-coated.
- Rated for fall arrest.
- Fasteners not included.

CONCRETE ANCHOR STRAP

Concrete anchor strap that can be installed as a permanent anchor during building construction, and can also be used in temporary applications, such as wood framing, rebar work, or pipe racking.



4' STRAP
UPC: 626939236084

FEATURES

- Easy to install. Lightweight and durable.
- Manufactured from polyester and galvanized steel.
- Sheathed in heavy duty nylon webbing to protect the inner core from abrasion and wear.
- Compatible with horizontal lifelines.

PART #	PRODUCT NAME
23-607	3' CONCRETE ANCHOR STRAP
23-608	4' CONCRETE ANCHOR STRAP
23-609	6' CONCRETE ANCHOR STRAP
23-610	6' CONCRETE ANCHOR STRAP SINGLE D-RING
23-614	6' CONCRETE ANCHOR STRAP DOUBLE D-RING

PREMIUM CROSS ARM STRAP

The premium cross arm strap is a reusable anchorage connector that can be used in a variety of fall protection applications.



3' STRAP
UPC: 626939236114

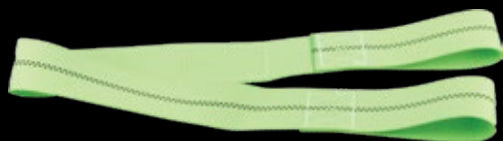
FEATURES

- Easy to install.
- Lightweight and durable.
- Manufactured from polyester and galvanized steel with reinforced webbing for superior durability and functionality compared to standard models.

PART #	PRODUCT NAME
23-611	3' PREMIUM CROSS ARM STRAP
23-612	4' PREMIUM CROSS ARM STRAP
23-613	6' PREMIUM CROSS ARM STRAP

23-602 3'x2" WEBSTRAP SLING

Excellent option for use on anchorages where other types of anchorage connectors can't be installed.



3'x2" WEBSTRAP SLING
UPC: 626939236022

FEATURES

- Strong and durable 2-ply high strength webbing.
- Lightweight, portable, highly resistant to abrasion.
- 5,000 lb fall arrest anchorage for one user.

23-SA6015
36" TIE-OFF STRAP

Simply wrap the strap around a supporting member and connect your personal protective equipment to the D-ring with a snaphook or carabiner. Perfect for open framing with minimal bracing requirements. Manufactured with webbing that is rated over 18,000 lb.



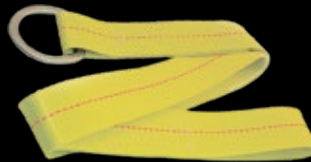
36" TIE-OFF STRAP
UPC: 786158601503

FEATURES

- Super heavy duty, designed to last.
- 18,000 lb webbing and proof loaded D-ring.
- Permanent warning label sewed on strap.
- Complies with all OSHA, ANSI, and CSA standards.
- Quick and easy fall protection.

23-SA6050D
3' VALUE TIE-OFF STRAP

Designed as a cost effective, reusable anchor point for residential framers on trusses, top plates, in hallways and foyers, balloon walls and stairways for fall protection safety. Wrap the strap around a supporting member and tie off to it with a lanyard, vertical lifeline or SRL.



3' VALUE TIE-OFF STRAP
UPC: 786158605044

FEATURES

- Installs in under 10 seconds. Reusable.
- Complies with all OSHA, ANSI and CSA standards.
- Manufactured from 5,000 pound domestic webbing.
- 10,000 lb minimum breaking strength.
- Comes with a permanent warning label.

23-SA2009
HEX HEAD SCREWS—10 PACK

Included with the temporary/reusable anchors.



HEX HEAD SCREWS
UPC: 786158200904

FEATURES

- Rated for fall arrest.
- Temporary installation only.
- #12 DPH hex head screw.
- 2 7/8" length.
- 1/4" hex head.

ANCHOR NAILS

Anchor nails that can be used on many of our temporary/reusable anchors.



BRIGHT DUPLEX NAIL
UPC: 786158201208

FEATURES

- Fall restraint only.
- Temporary installation only.
- 16d nail.
- 3 1/2" length.

PART #	PRODUCT NAME
23-SA2012	BRIGHT DUPLEX NAILS
23-SA3007	SINKER NAILS

ADP ROPE GRAB

The ADP class rope grab is designed to be installed onto a $\frac{5}{8}$ " lifeline. Can "open" to be removed or installed. It is equipped with an Automatic Dorsal Panic which prevents unintentional disengagement of the locking function of the lifeline if the device is grasped during a free fall.



PRIMEGRIP ADP ROPE GRAB
UPC: 626939232017

FEATURES

- ADP rope grab design Open-On/Open-Off.
- ADP—Automatic Dorsal Panic.
- Zinc-coated stainless steel construction throughout.
- Complies with all OSHA, ANSI and CSA standards.
- For use on $\frac{5}{8}$ " vertical lifelines.

PART #	PRODUCT NAME
23-201	PRIMEGRIP ADP ROPE GRAB
23-SA4015C	CLAMSHELL ROPE GRAB

ROPE GRAB WITH ABSORBER

This rope grab is integrated with a 2' lanyard certified for use in fall arrest. Designed with a double-locking closing mechanism and a large ring for direct web or snap hook attachment. Compatible with $\frac{5}{8}$ " diameter rope, it can be easily attached to any point on lifeline. Features "hands free" operation on weighted vertical safety lines.



ROPE GRAB WITH E-6 ABSORBER
UPC: 626939232062

FEATURES

- Double locking closing mechanism.
- Hinge design allows attachment anywhere on lifeline.
- Large ring for direct web or snap hook attachment.
- Moves freely along $\frac{5}{8}$ " rope on brass rollers.
- Features external shock pack.

PART #	PRODUCT NAME
23-202	ROPE GRAB WITH E-4 ABSORBER
23-206	ROPE GRAB WITH E-6 ABSORBER

23-SA4015 SUPER GRAB

$\frac{7}{16}$ " Prussic style soft rope grab device with protective cover. The Prussic knot, used primarily in mountaineering and tree climbing is the most reliable means of grabbing line and resisting slip. Always remains flexible and expands/contracts with lifeline, any subtle force exerted in the ascending or descending direction initiates the locking feature and resists snagging.



SUPER GRAB
UPC: 786158401509

FEATURES

- Lightweight, non-mechanical rope grab.
- Bi-directional locking.
- Will not scratch roofing surface (or roofer).
- Remains flexible in any weather.
- For use on $\frac{5}{8}$ " vertical lifelines.
- Maximum worker capacity 3,000 lb.
- Strength rating 7,370 lb.

23-SA6040C

E-4 ENERGY ABSORBING LANYARD

72" energy absorber with web lanyard.

**E-4 ENERGY ABSORBING LANYARD**

UPC: 786158604030

FEATURES

- CSA E-4 compliant energy absorber.
- High-strength nylon 1" webbing.
- Z-rated snaphook and rebar hook.

23-513

SELF-LOCKING CARABINER

Self-locking carabiner for use with fall protection systems.

**SELF-LOCKING CARABINER**

UPC: 626939235131

FEATURES

- Heat-treated alloy steel.
- 100% proof loaded to 3,600 lb.
- Meets ANSI Z359.12, CSA Z259.12, EN 362.
- Minimum breaking load 5,000 lb.
- Gate strength 3,600 lb.

23-SA5001

AUTO-LOCK CARABINER

Super heavy duty, one handed operated connecting device. Can be used to connect lifelines, rope grabs, lanyards, harnesses, etc.

**AUTO-LOCK CARABINER**

UPC: 786158500196

FEATURES

- Yoke N-252G alloy steel yellow zinc-plated.
- Self-closing & self-locking with 3/4" opening.
- Complies with OSHA 1926, ANSI Z359.12, CSA Z259.12.
- Carabiner strength 9,217 lb.
- Gate strength 3,600 lb.

23-SA5006Z

ALUMINUM AUTO-LOCK CARABINER

A lighter option to the traditional steel carabiner. It can be used to connect lifelines, rope grabs, lanyards, harnesses, etc.

**ALUMINUM AUTO-LOCK CARABINER**

UPC: 786158500622

FEATURES

- Yoke N-2853G aluminum alloy.
- Self-closing & self-locking with 7/8" opening.
- Weighs in at 4 oz.
- Complies with OSHA 1926, ANSI Z359.12 and CSA Z259.12.
- Carabiner strength 6,744 lb.
- Gate strength 3,600 lb.

23-SA5010 O-RING

Specified for use with horizontal lifeline systems and as an optional connector for a 1" lanyard.



O-RING
UPC: 786158501001

FEATURES

- Zinc-plated stamped steel.
- Minimum breaking strength 5,000 lb.

23-651 SPLIT LEATHER WORK GLOVES

Premium side split leather gloves. 12-pack.



SPLIT LEATHER WORK GLOVES
UPC: 626939236510

FEATURES

- Offer top-notch warmth, durability and dexterity.
- Soft lined palm to keep hands comfortable.

23-914 COTTON MASONRY GLOVES

General purpose gloves. 12-pack.



COTTON MASONRY GLOVES
UPC: 626939239146

FEATURES

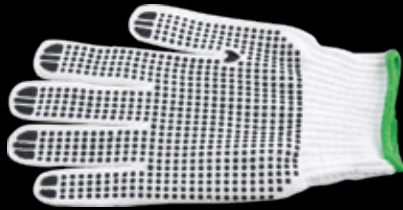
- 60% Cotton, 40% Polyester knit.
- Green cuff.



23-923

SPOTTED GRIP GLOVES

General purpose gloves with PVC grip. 12-pack.



SPOTTED GRIP GLOVES
UPC: 626939239238

FEATURES

- 60% Cotton, 40% Polyester knit.
- Green cuff.

23-927

FULLY SPOTTED GLOVES

General purpose gloves with PVC grip. 12-pack.



FULLY SPOTTED GLOVES
UPC: 626939239276

FEATURES

- 60% Cotton, 40% Polyester knit.
- Black cuff.

GRIP-PRO

Primegrip professional series gloves handle hot, cold, wet, dry, wind, oil, dirt, debris, abrasion, stress, fatigue.



GRIP-PRO MEDIUM
UPC: 626939239504

FEATURES

- 100% rubber coating.
- Unique texture finish grips oily, wet or dry objects.
- Protective coating on fingertips and thumb crotch.
- Uncoated back design for breathability.

FREEZEMATE

Primegrip professional series gloves handle hot, cold, wet, dry, wind, oil, dirt, debris, abrasion, stress, fatigue.



FREEZEMATE MEDIUM
UPC: 626939239535

FEATURES

- Acrylic knit shell for insulation and breathability.
- Foam latex dip-coated palm and back.
- Extended cuff protects wrists from low temperatures.
- Brushed liner provides wind and water resistance.

PART #	PRODUCT NAME
23-950	GRIP-PRO MEDIUM
23-951	GRIP-PRO LARGE
23-952	GRIP-PRO X-LARGE

PART #	PRODUCT NAME
23-953	FREEZEMATE MEDIUM
23-954	FREEZEMATE LARGE
23-955	FREEZEMATE X-LARGE

NIGHT HAWK

Primegrip professional series gloves handle hot, cold, wet, dry, wind, oil, dirt, debris, abrasion, stress, fatigue.



NIGHT HAWK MEDIUM
UPC: 626939239566

FEATURES

- Foam latex technology provides better grip performance than other nitrile foam gloves.
- Foam latex coating, seamless liners and ergonomic design.
- Uncoated back for air circulation.

PART #	PRODUCT NAME
23-956	NIGHT HAWK MEDIUM
23-957	NIGHT HAWK LARGE
23-958	NIGHT HAWK X-LARGE

XTREME GRIP

Primegrip professional series gloves handle hot, cold, wet, dry, wind, oil, dirt, debris, abrasion, stress, fatigue.



XTREME GRIP MEDIUM
UPC: 626939239610

FEATURES

- Xtreme Grip foam nitrile coating provides superior gripping power even in wet conditions.
- Trip-thread nylon seamless knit shell for comfort.
- Snug-fitting wrist protects your hand from dirt and debris.

PART #	PRODUCT NAME
23-961	XTREME GRIP MEDIUM
23-962	XTREME GRIP LARGE
23-963	XTREME GRIP X-LARGE

PHANTOM

Primegrip professional series gloves handle hot, cold, wet, dry, wind, oil, dirt, debris, abrasion, stress, fatigue.



PHANTOM MEDIUM
UPC: 626939239641

FEATURES

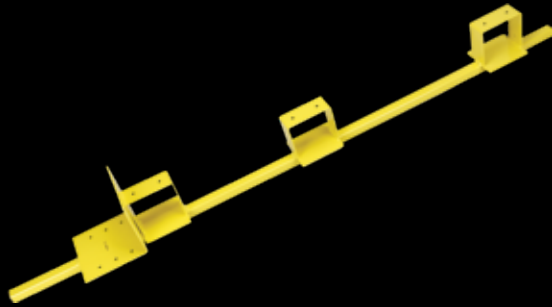
- Strong, lightweight and flexible nitrile coating.
- Ergonomically formed to reduce hand fatigue.
- Breathable seamless nylon shell.
- Knit wrist for a snug fit.

PART #	PRODUCT NAME
23-964	PHANTOM MEDIUM
23-965	PHANTOM LARGE
23-966	PHANTOM X-LARGE

23-471

VERTICAL GUARD RAIL POST

Easy to assemble vertical guard rail for securing flat roof perimeter.



VERTICAL GUARD RAIL POST
UPC: 626939234714

FEATURES

- Oven-baked paint for long-lasting surface protection.
- Complies with OSHA standards and guidelines.
- Steel rails installed at 8' intervals, saving time and reducing the number of posts required.
- Can be installed by screwing directly into roof facing.

23-473

PARAPET GUARD RAIL BASE

Parapet clamp for guard rail systems.



PARAPET GUARD RAIL BASE
UPC: 626939234738

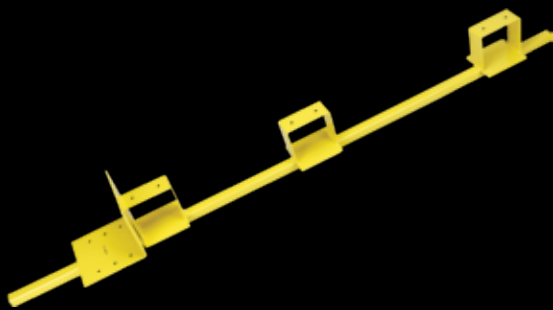
FEATURES

- Oven-baked paint for long-lasting surface protection.
- Complies with relevant OSHA standards and guidelines.

23-472

PARAPET GUARD RAIL SYSTEM

Easy to assemble guard rail system equipped with user-friendly clamps for fail-safe tightening of 2"x4" planks. Includes a 56" guard rail post and parapet clamp.



PARAPET GUARD RAIL SYSTEM
UPC: 626939234721

FEATURES

- Oven-baked paint for long-lasting surface protection.
- Complies with relevant OSHA standards and guidelines.
- Steel rails installed at 8' intervals, saving time and reducing the number of posts required.
- Combination of wood studs and steel rails allows more complex installations.
- Can be installed using clamps by screwing directly into parapets without clamps.

PRO SERIES HI-VIS HARNESS

High visibility harness with tri-lam padding, 5-point adjustment, quick connect buckles and rear D-ring.

FEATURES

- Durable and comfortable harness.
- Hi-Vis reflective coating. Heavy duty D-ring pad.
- Quick connect buckles. Elastic webbing keepers.
- E-coated black hardware. Fall indicator labels.
- Complies with OSHA, ANSI and CSA requirements.

PART #	PRODUCT NAME	USER WEIGHT
23-002	SMALL	UP TO 140 LB
23-003	MEDIUM	UP TO 140 LB
23-004	LARGE	140-220 LB
23-005	X-LARGE	220-300 LB



MEDIUM
UPC: 626939230037

5-POINT FULL BODY HARNESS

Class-A fall arrest harness.

FEATURES

- Extremely strong, durable 1¾" polyester webbing.
- 5 independent adjustment points.
- Back D-ring certified for fall arrest.
- CSA Z259.10-12 certified, OSHA & ANSI compliant.
- Universal small-large size.

PART #	PRODUCT NAME
23-101	STANDARD
23-103	WITH SIDE D-RINGS
23-105	WITH GROMMET LEG CONNECTIONS



5-POINT FULL BODY HARNESS
UPC: 626939231010

6-POINT CONSTRUCTION HARNESS

Ideal for standard construction worker, lightweight and incredibly durable.

FEATURES

- 6 independent points of adjustment.
- Dorsal and side D-rings. "Quick-adjust" buckles.
- Integrated impact indicator.
- Lanyard keepers with dual function.
- Improved flexibility for added comfort.
- Hammer Loops. Tongue buckle leg straps.
- Hi-Vis fluorescent coating.



PART #	PRODUCT NAME
23-115	MEDIUM-LARGE
23-116	LARGE-X-LARGE

6-POINT CONSTRUCTION HARNESS
UPC: 626939231157



DELUXE HI-VIS HARNESS

Provides a heavy duty yet comfortable and lightweight experience. Padded frame.

FEATURES

- SAS3 Tri-Lam fabric—transfers load, absorbs moisture.
- 1 rear and 2 side D-rings.
- Heavy duty 2" wide, 16 grommet utility belt.
- Quick connect buckles.
- Dual fall indicators.
- Heavy duty D-ring pad.



SMALL
UPC: 626939231201

PART #	PRODUCT NAME
23-120	SMALL
23-122	MEDIUM
23-124	LARGE
23-125	LARGE LONG
23-126	X-LARGE
23-127	X-LARGE LONG
23-130	SMALL WITH TOOL BAGS
23-132	MEDIUM WITH TOOL BAGS
23-134	LARGE WITH TOOL BAGS
23-135	LARGE LONG WITH TOOL BAGS
23-136	X-LARGE WITH TOOL BAGS
23-137	X-LARGE LONG WITH TOOL BAGS



SMALL WITH TOOL BAGS
UPC: 626939231300

SIZE	USER WEIGHT	USER HEIGHT	WAIST BELT
S	90–130 LB (40–60 KG)	5'5"–6' (1.5–1.7 M)	42" (106 CM)
M	120–170 LB (60–77 KG)	5'5"–6' (1.5–1.7 M)	48" (122 CM)
L	130–200 LB (60–90 KG)	5'5"–6' (1.5–1.7 M)	48" (122 CM)
L LONG	170–240 LB (77–108 KG)	5'10"–6'4" (1.7–2 M)	55" (140 CM)
XL	240–320 LB (77–108 KG)	6'–7' (1.8–2.1 M)	62" (157 CM)

DELUXE SILVER HARNESSES

Provides a heavy duty yet comfortable and lightweight experience. Padded frame.

FEATURES

- SAS3 Tri-Lam fabric—transfers load, absorbs moisture.
- 1 rear and 2 side D-rings.
- Heavy duty 2" wide, 16 grommet utility belt.
- Quick connect buckles.
- Dual fall indicators.
- Heavy duty D-ring pad.

PART #	PRODUCT NAME
23-129	LARGE
23-131	SMALL WITH TOOL BAGS
23-133	MEDIUM WITH TOOL BAGS
23-138	LARGE WITH TOOL BAGS
23-139	LARGE LONG WITH TOOL BAGS

SIZE	USER WEIGHT	USER HEIGHT	WAIST BELT
S	90–130 LB (40–60 KG)	5'5"–6' (1.5–1.7 M)	42" (106 CM)
M	120–170 LB (60–77 KG)	5'5"–6' (1.5–1.7 M)	48" (122 CM)
L	130–200 LB (60–90 KG)	5'5"–6' (1.5–1.7 M)	48" (122 CM)
L LONG	170–240 LB (77–108 KG)	5'10"–6'4" (1.7–2 M)	55" (140 CM)



LARGE
UPC: 626939231294



SMALL WITH TOOL BAGS
UPC: 626939231317



ULTRA-VIS DELUXE HARNESS

World's only ANSI Class 1 High Visibility Fall Protection Harness. It combines all of the features found in the Deluxe harness with special high visibility fabrics and 3M Heat laminated reflective strip.



LARGE

UPC: 626939231447

FEATURES

- Tri-Lam fully padded adjustable frame.
- Quick release leg straps and non-adjustable quick release chest strap.
- Fully padded heavy duty leg straps.
- Black coated hardware. Dual fall indicators.
- Resists moisture & UV.
- Complies with ANSI Z359.1, CSA Z259.11.05 for fall protection and ANSI/ISEA 107-2010 and CSA Z96-02 for Class 1 High Visibility.

PART #	PRODUCT NAME
23-144	LARGE
23-145	LARGE LONG

SIZE	USER WEIGHT	USER HEIGHT	WAIST BELT
L	130-200 LB (60-90 KG)	5'5"-6' (1.5-1.7 M)	48" (122 CM)
L LONG	170-240 LB (77-108 KG)	5'10"-6'4" (1.7-2 M)	55" (140 CM)

23-SA3002 MAX HARNESS

Built for compliance and cost effectiveness. Polyester webbing with a rear D-Ring, perfect entry-level harness for all those in the residential construction trade.



MAX HARNESS

UPC: 786158300208

FEATURES

- Extremely lightweight. Budget friendly cost.
- 3-Point design with parachute buckles.
- Rear D-ring for fall arrest. Built-in fall indicators.
- Meets all OSHA, ANSI and CSA standards for fall protection.

23-SA6060 TRAUMA SUSPENSION LADDER

Simple life-saving ladder that can be deployed after a free fall. Pull it out of the pouch, put a foot into one of the loops and stand up. This takes the pressure off of the femoral artery and prevents suspension trauma.



TRAUMA SUSPENSION LADDER

UPC: 786158606003

FEATURES

- Compact, lightweight and reusable.
- Attaches to any full body harness.
- No connectors required.
- 3½" x 7½" storage pouch included.

EVOLUTION DELUXE HARNESSES

Offers superior comfort, styling, and safety. This harness features ultra-flow padding that helps keep moisture away from the body, and the double-grommeted tool belt provides the ultimate support when combined with Velcro waist belt.



SMALL
UPC: 626939231478

FEATURES

- Ultra-flow padding.
- Double grommeted tool belt.
- Velcro waist belt for custom fit.
- Quick connect buckles on leg and chest straps.
- Finished ends for a clean and professional look.
- CSA Z259.10-12 Certified, OSHA & ANSI compliant.

PART #	PRODUCT NAME
23-147	SMALL
23-148	MEDIUM-LARGE
23-149	LARGE-X-LARGE
23-150	X-LARGE-XX-LARGE
23-153	SMALL WITH TOOL BAGS
23-154	MEDIUM-LARGE WITH TOOL BAGS
23-155	LARGE-X-LARGE WITH TOOL BAGS
23-156	X-LARGE-XX-LARGE WITH TOOL BAGS

SIZE	USER WEIGHT	USER HEIGHT
S	100-160 LB (45-72 KG)	4'10"-6' (1.5-1.8 M)
M-L	140-240 LB (63-108 KG)	5'-6'3" (1.5-1.9 M)
L-XL	180-310 LB (81-140 KG)	5'2"-6'6" (1.5-2 M)
XL-XXL	220-360 LB (100-163 KG)	5'4"-6'8" (1.6-2 M)

QUICK CONNECT LEG AND CHEST STRAPS



23-152 TUBULAR SHOCK-ABSORBING LANYARD

Single-leg shock absorbing lanyard.



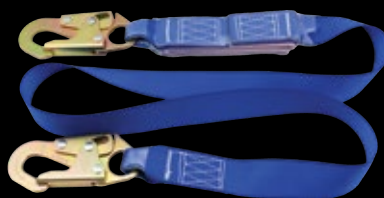
TUBULAR SAL
UPC: 626939231522

FEATURES

- Lightweight and durable tubular webbing.
- 6' length.
- Locking snap and rebar hooks.
- Meets ASTM, CSA, OSHA and ANSI Z359-2007 requirements.

SHOCK-ABSORBING LANYARD

Intended for use as a component of a fall arrest system where the user's weight is within 100–254 lb. Easy to inspect and highly durable.



6' SAL
UPC: 626939231720

FEATURES

- Easy to inspect.
- Highly durable.
- Snap hook ends.
- CSA Z259.11-05 Certified and OSHA/ANSI compliant.

PART #	PRODUCT NAME
23-171	3' SHOCK-ABSORBING LANYARD
23-172	6' SHOCK-ABSORBING LANYARD

23-162 DUAL HOOK SHOCK-ABSORBING LANYARD

This 6' single-legged shock absorbing lanyard includes a locking snap hook and a large locking rebar hook. This lanyard features a built-in woven inner core that expands in the event of a fall to reduce arrest forces.



DUAL HOOK SAL
UPC: 626939231621

FEATURES

- Built-in woven expanding core.
- Steel locking rebar hook and snap hook.
- Outer jacket that works as a back-up lanyard.
- Durable lightweight polyester materials.
- Warning flag that provides visual proof of a fall.
- Meets ANSI Z359.13-2009, CSA, and OSHA standards.
- User Capacity 100–254 lb.

23-176

TOOL SAFETY LANYARD

Tethers tools to help workers prevent injury as well as damage and lost productivity from dropped tools.



TOOL SAFETY LANYARD
UPC: 626939231768

FEATURES

- Stretch cord surrounded by tubular nylon webbing.
- Lock stitching at both ends for extra security.
- Aluminum carabiner & loop with adjustable barrel lock for attachments.
- Complies with work at heights laws.
- Maximum safe working capacity: 10 lb.
- Carabiner dimensions: 3" x 1.5".
- Maximum extended length: 30".

CLASS A ROPE LANYARD

Rope lanyard designed for use as a work positioning device for one person.



3' CLASS A ROPE LANYARD
UPC: 626939233007

FEATURES

- Tenex 12 strand 1/2" polyester lanyard.
- 11,800 lb minimum tensile strength.
- Complies with ANSI Z359.1-07, CSA Z259.11-05, OSHA 1926:502.

PART #	PRODUCT NAME
23-300	3' CLASS A ROPE LANYARD
23-301	6' CLASS A ROPE LANYARD

SPECIFICATION	RATING
MINIMUM TENSILE	11,800 LB
ELONGATION	2% @ 1,800 LB
MAX USER WEIGHT (E4)	310 LB
MAX USER WEIGHT (E6)	340 LB



23-SA6025

MAX FORCE E-4 ENERGY ABSORBER

OSHA, ANSI and CSA compliant and features Z359 hardware, UV resistant shrink tubing for easy inspection and comprehensive warning/inspection labels.



MAX FORCE E-4 ENERGY ABSORBER
UPC: 786158602500

FEATURES

- Domestic grade webbing for ultra reliability.
- E-4 CSA compliant.
- Inspection matrix on all absorbers.
- Reduces force load to 900 lb.
- Comes with an integral snap hook and large D-ring.
- User weight 100–310 lb.
- Maximum deployment length 46".

23-SAIV6061

MAX FORCE E-6 ENERGY ABSORBER

E-6 energy absorber with loop end and snap hook.



MAX FORCE E-6 ENERGY ABSORBER
UPC: 786158606140

FEATURES

- Domestic grade webbing for ultra reliability.
- E-6 CSA compliant.
- Inspection matrix on all absorbers.
- Z-rated snap hook.
- User weight: 200–340 lb.
- Maximum deployment length 69".

SINGLE HOOK LIFELINES

3-strand vertical lifeline with single hook.



50' SINGLE HOOK LIFELINE
UPC: 626939232635

FEATURES

- Aluminum swage eye splice (3,600 lb gate strength and double locking snaphook) with adhesive PVC cover.
- Resists UV exposure, abrasion and water absorption.
- Can be used with mechanical and Prussic rope grabs.
- Compliant with OSHA, ANSI and CSA standards.
- Rated for 10,582 lb.

PART #	PRODUCT NAME
23-254	25' SINGLE HOOK LIFELINE
23-255	30' SINGLE HOOK LIFELINE
23-257	35' SINGLE HOOK LIFELINE
23-263	50' SINGLE HOOK LIFELINE
23-264	100' SINGLE HOOK LIFELINE

SELF-RETRACTING LIFELINE

Built for residential and light commercial construction. In the event of a free fall, locks itself and arrests the fall, while limiting the arresting force. Capacity up to 300 lb.



50' SELF-RETRACTING LIFELINE
UPC: 786158290103

FEATURES

- Heavy duty ABS housing with galvanized steel cable.
- Fall indicator built into snaphook.
- Complies with OSHA, ANSI and CSA standards.
- Max arrest force: 900 lb. Max arrest distance: 42".

PART #	PRODUCT NAME
23-2901K	50' SELF-RETRACTING LIFELINE
23-2903K	30' SELF-RETRACTING LIFELINE
23-2904K	20' SELF-RETRACTING LIFELINE
23-2906K	10' SELF-RETRACTING LIFELINE

X-LINE PNEUMATIC LIFELINE

Combines a fall protection lifeline and an air-hose into one product. Instantly cuts down tripping hazards in half.



50' WITH PRUSSIC KNOT ROPE GRAB
UPC: 626939232673

FEATURES

- Lifeline and air hose combined in one unit.
- 12 strand lifeline.
- 1/4" air hose.
- Snaphook and integrated rope grab device.

PART #	PRODUCT NAME
23-259	30' X-LINE WITH CLAMSHELL ROPE GRAB
23-260	50' X-LINE WITH CLAMSHELL ROPE GRAB
23-266	30' X-LINE WITH PRUSSIC KNOT ROPE GRAB
23-267	50' X-LINE WITH PRUSSIC KNOT ROPE GRAB



SPECIFICATION	RATING
LIFELINE STRENGTH	11,800 LB
AIR HOSE DIAMETER	1/4"
MAX PRESSURE	250 PSI @ 70°C
SNAPHOOK STRENGTH	5,000 LB

VALUE LIFELINE

Made from a 10,000 lb three-strand polyolefin rope. It will last you a long time without costing you a fortune.



100' LIFELINE
UPC: 786158402308

FEATURES

- Very strong & durable 5/8" rope for vertical lifeline use.
- Z-rated double locking snaphook.
- Serial number and warning label permanently attached.
- Compatible with prussic or mechanical rope grab.
- Complies with OSHA, ANSI and CSA standards.

PART #	PRODUCT NAME
23-SA4020	25' VALUE LIFELINE
23-SA4021	50' VALUE LIFELINE
23-SA4023	100' VALUE LIFELINE

CRA HORIZONTAL LIFELINE KITS

Used to adjust horizontal lifeline lengths and wire rope terminations for commercial roof anchors.



SMALL—UP TO 60'
UPC: 786158105018

FEATURES

- Used for lifeline length up to 120'.
- Include everything needed for complete installation except for cable.
- Galvanized steel finish.

PART #	PRODUCT NAME	LIFELINE LENGTH
23-SA1050P	SMALL	UP TO 60'
23-SA1051P	LARGE	UP TO 120'

INCLUDED	SMALL—UP TO 60'	LARGE—UP TO 120'
TURNBUCKLE	1	2
CLAMPS	6	6
THIMBLES	2	2
SLIDER O RINGS	4	4



23-SA1053 COUPLER

Coupler device to connect turnbuckles, absorbers and anchors.



COUPLER
UPC: 786158105308

FEATURES

- 304 stainless steel (11 gauge).
- Does not include attachment bolts.
- 5,000 lb minimum tensile strength.

23-SA1058 HORIZONTAL LIFELINE TURNBUCKLE

Used for tension adjustment of horizontal lifeline systems.



HORIZONTAL LIFELINE TURNBUCKLE
UPC: 786158105803

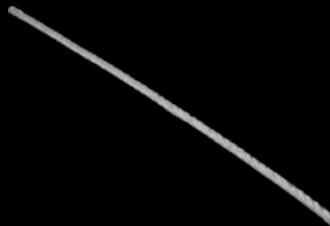
FEATURES

- Durable and strong galvanized ASTM 1045 steel.
- $\frac{9}{16}$ "x3" stainless steel attachment bolts/lock nuts.

SPECIFICATION	RATING
WORKING LOAD	5,200 LB
MINIMUM BREAKING STRENGTH	26,000 LB
MAXIMUM EXTENSION	34.5"
CLOSED LENGTH	23"

23-SA1055 GALVANIZED WIRE ROPE

Used for horizontal lifeline systems.



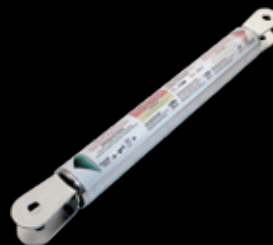
GALVANIZED WIRE ROPE
UPC: 786158105506

FEATURES

- Type 7x19.
- 14,400 lb breaking strength.
- Sold per foot, cut to length.

23-SA1059 METALLIC ENERGY ABSORBER

Used for horizontal lifeline systems.



METALLIC ENERGY ABSORBER
UPC: 786158105902

FEATURES

- Includes $\frac{7}{16}$ "x2.25" stainless steel attachment bolts.
- Fall and tension indicators.
- Compatible with all CRA loop to fixtures.
- 316 stainless steel construction.
- 771 lb maximum activation force.

SAFETY GLASSES

Economical and stylish standard safety glasses for construction applications.



CLEAR LENS
UPC: 626939235001

FEATURES

- Sport temples with soft temple tip pads for a secure and comfortable fit.
- Secure wrap-around design.
- Polycarbonate, distortion-free, hardcoat lenses.
- Ideal for protection against abrasion, airborne particles, biohazards and impact.
- Complies with all ANSI, OSHA and CSA standards.

PART #	PRODUCT NAME
23-500	CLEAR LENS SAFETY GLASSES
23-502	BLUE MIRROR LENS SAFETY GLASSES
23-504	SILVER MIRROR LENS SAFETY GLASSES

FACE SHIELD

Face shield for protection against debris with a mounting bracket for hard hats.



SHIELD AND MOUNT
UPC: 626939235063

FEATURES

- Plastic shield.
- Bracket manufactured with precision formed aluminum.
- Securely fits on all hard hats.

PART #	PRODUCT NAME
23-506	FACE SHIELD AND MOUNT
23-507	FACE SHIELD
23-508	FACE SHIELD MOUNT



CSA TYPE 2 HARD HAT

Provides crown and lateral impact & penetration force transmission protection, dielectric protection up to 2kV.



WHITE
UPC: 6626939235612

FEATURES

- Shell molded from 1% high density polyethylene with special UV radiation protection additive.
- Low profile design. Flame retardant foam liner.
- PPE slots to accommodate protective equipment.
- Multi-positional suspension adjustment.
- Low riding nape strap and pad.
- Heat exhaust and rain channels.

PART #	PRODUCT NAME
23-561	CSA TYPE 2 HARD HAT WHITE
23-562	CSA TYPE 2 HARD HAT BLUE
23-563	CSA TYPE 2 HARD HAT YELLOW
23-564	CSA TYPE 2 HARD HAT RED

DUST MASKS

Approved for 95% efficient protection against non-oil particulates. Can be used for welding where a mask or full-face respirator is not required.



WITH EXHAUST VALVE
UPC: 626939235810

FEATURES

- Soft pre-shaped nose cushion and adjustable head strap with soft polypropylene inner layer provide the industry accepted N95 disposable respirator.
- This mask is also available with a layer of activated carbon that filters out nuisance levels (below PEL) of organic vapors and some acid gases.
- Does not contain latex rubber.
- NIOSH Approved.

PART #	PRODUCT NAME
23-580	DUST MASK BASIC—20 PACK
23-581	DUST MASK WITH EXHAUST VALVE—10 PACK

23-582 EAR BAND

Band-style hearing protection.



EAR BAND
UPC: 626939235827

FEATURES

- Lightweight and comfortable with soft caps. Flexible, durable band.
- Fits over the ear canal for sufficient noise reduction.
- All materials are non-toxic. Clean in soap and water.
- NRR 26dB, meets CSA Class A.

LASER LITE EARPLUGS

Economical choice for work situations that demand a high degree of comfort, frequent changes, or where hygiene presents a problem for re-use.



CORDED LASER LITE
UPC: 626939235858

FEATURES

- Highly visible earplug.
- Self expanding polyurethane foam.
- Contoured T-shape for easy handling and wear.
- Ideal for any noise environment 100dB to 105dB.

PART #	PRODUCT NAME
23-584	LASER LITE EARPLUGS UNCORDED—200 PAIRS
23-585	LASER LITE EARPLUGS CORDED—100 PAIRS

MAX EARPLUGS

Polyurethane foam earplug.



CORDED MAX
UPC: 626939235872

FEATURES

- Bell shape delivers maximum in-ear comfort.
- Contoured design easier to insert.
- Smooth closed cell-foam skin prevents dirt build-up.
- Complies with ANSI, OSHA and CSA regulations.

PART #	PRODUCT NAME
23-586	MAX EARPLUGS UNCORDED—200 PAIRS
23-587	MAX EARPLUGS CORDED—100 PAIRS

23-588 HEARPACK SMARTFIT EARPLUGS

Uses body heat to adapt to the shape of the ear canal for a comfortable, personalized fit. Reusable.



HEARPACK SMARTFIT EARPLUG
UPC: 626939235889

FEATURES

- Detachable cord system and HearPack® carry case.
- Simplifies inventory control—a single product fits most wearers.
- SmartFit Process Industry style features attached cotton cord.

23-589 LEIGHTNING EARMUFF

Howard Leight's patented Air Flow Control delivers optimal attenuation across all frequencies, without increasing earcup size or weight.



LEIGHTNING EARMUFF
UPC: 626939235896

FEATURES

- Robust steel headband resists tough environment.
- Snap-in ear cushions for easy replacement.
- Padded foam headband delivers superb comfort.
- Three attenuation levels for targeted attenuation.
- Height adjustment for use with other equipment.
- Folding design for easy storage, less than 4" wide.

43-114

KNEE SAVER KNEE PADS



The Knee Saver is constructed with a specially formulated foam rubber for comfort and have our popular Knee Pit Saver strap sleeves built-in.



KNEE SAVER

UPC: 626939431144

FEATURES

- Extra softness and comfort.
- Superb traction on any surface.
- Ergonomic concave design holds knee pads from sliding or riding up while offering true shin and thigh comfort while standing.
- Built-in Knee Pit Savers prevent pressure and chafing from the leather straps, and has air holes for breathability.

43-112

ROOFER'S KNEE PADS

Constructed from a special sponge rubber blend, they are perfect for use on cement, masonry, asphalt and other roof surfaces.



ROOFER'S KNEE PADS

UPC: 626939431120

FEATURES

- Specially formulated natural sponge rubber.
- Reinforced by "power mesh" for extra durability.
- ¾" wide leather straps.
- Adjustable buckles.

43-115

FOAM RUBBER KNEE PADS

Lightweight and durable foam rubber knee pads.



FOAM RUBBER KNEE PADS

UPC: 626939431151

FEATURES

- Comfortable elastic strap.
- One size fits all.

43-118
QUICK GRIP KNEE PADS

Grooved knee pads with firm grip. Quick connect buckles allow for quick adjustment and removal.



QUICK GRIP KNEE PADS
UPC: 626939431182

FEATURES

- Soft premium quality rubber for extra comfort and long life.
- Ergonomic design for better grip.
- Comfortable padding.
- Quick connect buckles for easy adjustment.

43-123
LEATHER KNEE PADS

For veterans of the trades who prefer to go with leather when it comes to their knee pads.



LEATHER KNEE PADS
UPC: 626939431236

FEATURES

- Non-marring leather is excellent for flooring. Riveted for extra strength.
- Designed for comfort, protection and support.
- ½" thick water-repellent felt lining.
- Adjustable leather straps with steel buckles.

43-132
POLYURETHANE KNEE PADS

Heavy-duty knee pads.



POLYURETHANE KNEE PADS
UPC: 626939431328

FEATURES

- Extra thick polyurethane material.
- 2¾" leather straps per pad and metal buckles.

43-109
KNEE PIT SAVER

Soft rubber sleeve that slips onto knee pad straps to prevent the straps from chafing the knee pit.



KNEE PIT SAVER
UPC: 626939431090

FEATURES

- Soft, flexible rubber for comfort.
- Air holes for breathability. Easy to clean.
- Slip-resistant. Durable and long-lasting.
- 2 pairs per pack — 10¼" and 8".

43-111 ROOFER'S KNEE PAD STRAP

Replacement strap for Roofer's Knee Pads (43-112).



ROOFER'S KNEE PAD STRAP
UPC: 626939431113

FEATURES

- ¾" width.
- Adjustable buckles.

43-148 KNEE PAD INSERTS—PAIR

Pair of foam knee pad inserts for additional comfort.



KNEE PAD INSERTS
UPC: 626939431489

FEATURES

- Compatible with all Primegrip knee pads.
- Stick-on surface.
- Good for up to 5 uses.

FALL PROTECTION KITS

This is a complete all-in-one kit for fall protection. It includes a harness, rope grab with a 2' energy absorber, anchorage connector and a 25' or 50' lifeline all housed in a 5 gallon storage pail. The kit is fully customizable with a variety of rope lengths and anchor options, and is ideal for nearly any roofing job.



25' FALL PROTECTION KIT
UPC: 626939234400

FEATURES

- Full body safety harness.
- Rope grab with 2' lanyard energy absorber.
- Reusable roof anchor with D-ring.
- Single hook lifeline.
- 5 gallon storage pail.

PART #	PRODUCT NAME	23-440	23-450
		25' KIT	50' KIT
23-101	5-POINT FULL BODY HARNESS	✓	✓
23-202	ROPE GRAB WITH E-4 ABSORBER	✓	✓
23-413	REUSABLE ROOF ANCHOR	✓	✓
23-254	25' SINGLE HOOK LIFELINE	✓	
23-263	50' SINGLE HOOK LIFELINE		✓

**FULLY CUSTOMIZABLE WITH
A VARIETY OF ROPE LENGTHS
AND ANCHOR OPTIONS**

23-441

WORK POSITIONING KIT

All-in-one kit for fall protection and work positioning. The kit is fully customizable with a variety of rope lengths and anchor options, and is ideal for nearly any roofing job.



WORK POSITIONING KIT
UPC: 626939234417

FEATURES

- 23-103 5-Point Full Body Harness with Side D-Rings.
- 23-202 Rope Grab with E-4 Absorber.
- 23-413 Reusable Anchor.
- 23-254 25' Single Hook Lifeline.
- 5 gallon storage pail.

23-467

COOL BLAZE BURN KIT

A natural aloe base burn care product that is clear, odorless, effective and gentle. It is a must have item in every home, workplace and first aid kit.



COOL BLAZE BURN KIT
UPC: 626939234677

FEATURES

- Provides immediate relief for minor burns and cuts.
- Wall mountable and easy to transport.
- Packaged in a durable, hard cover case.

QTY	PRODUCT NAME	QTY	PRODUCT NAME
2	10x10 CM BURN DRESSING	6	1/2 OZ BURN GEL PACKET
2	NITRILE GLOVES—PAIR	1	4 OZ BURN GEL BOTTLE
12	ANTISEPTIC TOWELETTE	2	3"x4" STERILE PAD
1	2"x5 YARDS STERILE BANDAGE	1	14 CM BANDAGE SCISSORS
1	CLOTH TAPE	1	BILINGUAL FIRST AID BOOKLET

23-448

10 PIECE ROOFER'S KIT

Complete tool and equipment kit for any professional roofer.



10 PIECE ROOFER'S KIT
UPC: 626939234486

FEATURES

- 43-112 Roofer's Knee Pads.
- 43-393 2" Waist Belt.
- 36-250 Retractable Utility Knife.
- 36-256 2-Notch Deep Hook Blades—5 Pack.
- 43-204 10 Pocket Leather Pouch.
- 23-500 Clear Safety Glasses.
- 26-127 25'x1" Rubber Grip Measuring Tape.
- 04-458 14 oz Cushion Grip Shingling Hatchet.
- 36-344 12½" Tinsnips.
- 23-930 High Performance Gloves—Large.

HORIZONTAL LIFELINE KITS

This 5° fixed length horizontal lifeline system is for use by 3 workers in fall restraint or 2 in fall arrest. Uses a 3/8" galvanized cable connected to Hinge-2 anchors instead of using an expensive rope/block/tackle/pulley system. Can be rigged in succession to make a longer system with multiples of 10', 16' or 20' being used.

FEATURES

- Extremely cost effective with replaceable parts.
- Temporary installation on flat or pitched surfaces.
- 2-person fall arrest or 3-person fall restraint.

PART #	PRODUCT NAME
23-SA1321	20' HORIZONTAL LIFELINE KIT
23-SA1322	20' HORIZONTAL LIFELINE KIT WITH CARGO BAG



20' WITH CARGO BAG
UPC: 786158132212

- Reusable screws provided.
- Super heavy duty 3/8" galvanized cable rated for 14,000+ lb.
- Complies with OSHA 1926:502/1910.66 and ANSI Z359.1-07/A10.32-2012 Standards.

23-SA3001 MAX SAFETY KIT

Entry-level fall protection safety kit. The easiest and least expensive way to achieve OSHA compliance.



MAX SAFETY KIT
UPC: 786158300109

FEATURES

- Swaged 50' lifeline, 3,600 lb gate strength snaphook.
- Universal fit full body 5-point harness with hi-vis webbing.
- Reusable anchor for flat and pitched roofs.
- 48" tie-off strap.
- Mechanical rope grab with integral energy absorbing lanyard.
- Heavy duty storage bucket.
- Complies with OSHA, ANSI Standards.

MAX-X SAFETY KITS

Complete fall protection kit with the X-Line pneumatic lifeline with integrated air hose.



30' WITH PRUSSIC KNOT ROPE GRAB
UPC: 786158407617

FEATURES

- 12-strand lifeline with integrated 1/4" air hose.
- Prussic or ADP rope grab configurations available.
- E-4 energy absorber. 2 steel carabiners. Snaphook.
- Hinged reusable fall arrest roof anchor with 36 16d Duplex nails. 4 gallon storage bucket.

PART #	PRODUCT NAME
23-SA407630	30' WITH PRUSSIC KNOT ROPE GRAB
23-SA407650	50' WITH PRUSSIC KNOT ROPE GRAB
23-SA407730	30' WITH ADP ROPE GRAB
23-SA407750	50' WITH ADP ROPE GRAB

PADDED SUPPORT BELTS

Lightweight for worker comfort.



SMALL

UPC: 626939235339

FEATURES

- Padded lumbar support made from closed cell foam.
- Plated grommets for improved corrosion resistance.
- Polyester webbing.

PART #	PRODUCT NAME	BELT	PAD
23-533	SMALL	51"x2"	27.5"x6.25"
23-534	MEDIUM	53"x2"	30"x6.25"
23-535	LARGE	56"x2"	31"x6.25"
23-536	X-LARGE	61"x2"	33.5"x6.25"
23-537	XX-LARGE	64"x2"	35"x6.25"

SUPPORT BELTS

General purpose lightweight support belts for all trades, available with single or double D-rings.



2 RING MEDIUM

UPC: 626939235339

FEATURES

- Fits all harnesses.
- Plated grommets for improved corrosion resistance.
- Polyester webbing.

PART #	PRODUCT NAME	BELT	PAD
23-541	1 RING SMALL	51"x2"	27.5"x6.25"
23-542	1 RING MEDIUM	53"x2"	30"x6.25"
23-543	1 RING LARGE	56"x2"	31"x6.25"
23-544	1 RING X-LARGE	61"x2"	33.5"x6.25"
23-545	2 RING SMALL	51"x2"	27.5"x6.25"
23-546	2 RING MEDIUM	53"x2"	30"x6.25"
23-547	2 RING LARGE	56"x2"	31"x6.25"
23-548	2 RING X-LARGE	61"x2"	33.5"x6.25"



23-532

BELT-POUCH COMBO

Padded double ring work positioning support belt system with 2" utility belt and 3 nylon pouches.



BELT-POUCH COMBO
UPC: 626939235322

FEATURES

- Lightweight for worker comfort.
- Padded lumbar support made from closed cell foam.
- Plated grommets for improved corrosion resistance.
- Polyester webbing.
- Includes a 2-pocket pouch, 3-pocket pouch and hammer holder.

23-538

HARNESS PAD

Removable shoulder and back pad for harnesses.



HARNESS PAD
UPC: 626939235384

FEATURES

- Universal fit for any harness.
- Breathable nylong construction.
- Soft and comfortable closed-cell foam inside.
- Velcro and button for simple and secure fit.

23-SA6405X

16 GROMMET UTILITY BELT

X-Large 16-grommet All-Pakka black utility belt.



16 GROMMET UTILITY BELT
UPC: 786158640526

FEATURES

- 2" wide.
- 5/16" commercial grade black zinc-coated grommets.
- Waist size: 66".

RUBBER TIE DOWNS

EPDM rubber tie downs, ideal for securing heavy loads.



15" RUBBER TIE DOWN
UPC: 626939251131

FEATURES

- Heavy-duty, premium EPDM rubber stretches up to 1½" times its original length.
- Resists cracking, abrasion and other damage caused by steam, sunlight, oxidation, heat and cold.
- 2.5"×1.5" Steel hooks are pre-certified for strength.

PART #	PRODUCT NAME	MAX. LENGTH
25-113	15" RUBBER TIE DOWN	23.00"
25-114	21" RUBBER TIE DOWN	32.00"
25-116	31" RUBBER TIE DOWN	47.00"
25-117	41" RUBBER TIE DOWN	62.00"

RATCHET TIE DOWNS

Heavy duty multi-purpose ratchet tie downs that do the tightening for you.



1x15" RATCHET
UPC: 626939253456

FEATURES

- Minimum breaking strength 10,000 lb.
- Use for loads up to 3,333 lb.
- Superb holding power, precise tension adjustment.
- Push-button quick release. Vinyl-coated steel hooks.

PART #	PRODUCT NAME
25-345	1x15" RATCHET—1,000 LB
25-346	1x15" RATCHET—1,500 LB
25-353	2"×27' CAMO RATCHET
25-354	2"×27' RATCHET—BULK PACK
25-355	2"×27' RATCHET
25-356	2"×20' RATCHET

4-PACK TIE DOWNS

Ratchet and cambuckle tie downs available in retail-friendly 4 piece value packs.



1"×15" RATCHET
UPC: 626939253586

FEATURES

- Minimum breaking strength 1,500 lb.
- Use for loads up to 500 lb.
- Superb holding power, precise tension adjustment.
- Available in safety yellow or camo patterns.

PART #	PRODUCT NAME
25-347	1"×15' CAMO RATCHET—4 PACK
25-348	1"×15' CAMO—2 RATCHET & 2 CAMBUCKLE
25-358	1"×15' RATCHET—4 PACK

HOSE ENDS—2 PACK

Used to create or repair hoses by inserting hose end into a 1/4" I.D. air hose and crimping with a ferrule.



1/4" HOSE END
UPC: 626939306008

FEATURES

- Brass hose ends.
- 1/4" NPT thread. Male.

PART #	PRODUCT NAME
30-600	1/4" HOSE END
30-602	3/8" HOSE END

HOSE MENDERS

Used to assemble new hoses or replace old fittings on hoses by securing with a crimped ferrule.



1/4" HOSE MENDERS
UPC: 626939306404

FEATURES

- Brass hose menders with hose barbs.
- Both ends of mender have the same diameter as indicated.

PART #	PRODUCT NAME
30-640	1/4" HOSE MENDERS
30-642	3/8" HOSE MENDERS

TRIPLE OUTLET MANIFOLDS

With a triple outlet manifold, you can supply 3 air tools from a single inlet without having to disconnect and connect for every tool change.



FLAT HEX MANIFOLD
UPC: 626939306831

FEATURES

- Solid brass and aluminum construction.
- 1/4" NPT female inlet.
- Three 1/4" NPT female outlets.

PART #	PRODUCT NAME
30-683	FLAT HEX MANIFOLD
30-685-4	ALUMINUM MANIFOLD

M-STYLE COUPLERS

The M-style quick connect couplers and plugs will interchange with all US military specification MIL-C-4109 complying manufacturers.



1/4" FEMALE
UPC: 626939307159

FEATURES

- Brass body with brass sleeve. 1/4" or 3/8" NPT.
- 300 psi maximum inlet pressure.
- 250°F maximum temperature. Air flow 40 SCFM.

PART #	PRODUCT NAME
30-715	M-STYLE COUPLER 1/4" FEMALE
30-716	M-STYLE COUPLER 1/4" MALE
30-718	M-STYLE COUPLER 3/8" FEMALE
30-719	M-STYLE COUPLER 3/8" MALE

M-STYLE PLUGS

The M-style quick connect couplers and plugs will interchange with all US military specification MIL-C-4109 complying manufacturers.



1/4" MALE
UPC: 626939307272

FEATURES

- Case-hardened steel body with rust resistant plating.
- 1/4" or 3/8" NPT.
- 300 psi maximum inlet pressure.
- 250°F maximum temperature. Air flow 40 SCFM.

PART #	PRODUCT NAME
30-727	M-STYLE PLUG 1/4" MALE
30-728	M-STYLE PLUG 1/4" FEMALE
30-732	M-STYLE PLUG 3/8" FEMALE
30-733	M-STYLE PLUG 3/8" MALE

A-STYLE COUPLERS

Easy to use A-style push type couplers.



1/4" FEMALE
UPC: 626939307753

FEATURES

- Push type. Steel body with rust-resistant plating.
- 1/4" NPT.
- 300 psi maximum inlet pressure.
- 250°F maximum temperature. Air flow 40 SCFM.

PART #	PRODUCT NAME
30-775	A-STYLE COUPLER 1/4" FEMALE
30-776	A-STYLE COUPLER 1/4" MALE

30-746 1/4" MALE AMT-STYLE COUPLER

Three-way coupler that accepts A-style, M-style and T-style 1/4" plugs.



1/4" MALE AMT-STYLE COUPLER
UPC: 626939307463

FEATURES

- 1/4" NPT male.
- Push type with drag guard.
- Heavy duty rust-resistant brass body.

30-800 TEFLON TAPE

Used to wrap around the exposed threads of pipes and air hoses before being screwed in.



TEFLON TAPE
UPC: 626939308002

FEATURES

- Comes in resealable plastic container.
- Works with any fitting to provide a high quality seal.
- Impervious to fuel and oil.
- Ensures a secure and tight seal.

LOW TEMPERATURE AIR HOSES

Primegrip's "Yukon Tough" low temperature air hoses, made from specially formulated compounds of high grade PVC resin, are engineered to be tough and flexible at very low temperatures. The superior physical properties and design of the hose makes it outperform other general purpose PVC and rubber hoses in cold weather air tool applications.



1/4" NPT x 100' LENGTH
UPC: 626939311170

PART #	PRODUCT NAME
31-115	1/4" NPT x 25' LENGTH LOW TEMPERATURE AIR HOSE
31-116	1/4" NPT x 50' LENGTH LOW TEMPERATURE AIR HOSE
31-117	1/4" NPT x 100' LENGTH LOW TEMPERATURE AIR HOSE
31-120	3/8" NPT x 25' LENGTH LOW TEMPERATURE AIR HOSE
31-121	3/8" NPT x 50' LENGTH LOW TEMPERATURE AIR HOSE
31-122	3/8" NPT x 100' LENGTH LOW TEMPERATURE AIR HOSE

FEATURES

- Excellent low temperature flexibility.
- Extremely easy to handle, even in cold weather.
- Excellent abrasion resistance.
- Resilient material avoids permanent deformation.
- Lightweight.

31-813 AIR TOOL LUBRICANT

Specifically designed for use in piston type and rotary air tools, as well as in-line air lubrication systems.



AIR TOOL LUBRICANT
UPC: 626939318131

FEATURES

- 1 litre bottle with nozzle.
- Maximizes the life of air tools, lubricators, valves and cylinders.
- Prevents seizure of air tools and pneumatic equipment.

31-823 AIR COMPRESSOR OIL

For use in centrifugal compressors where the manufacturer specifies a non-detergent 30 weight oil.



AIR COMPRESSOR OIL
UPC: 626939318230

FEATURES

- 1 litre bottle with nozzle.
- Protects against oxidation, corrosion, foaming and wear of metal parts.
- Protects against sludge and maintains its viscosity in the temperature range of 20°F–440°F.

45-121 SKELETON-TYPE GUN

9" half-barrel caulking gun. Suitable for light-to-medium applications of glazing, sealing or caulking.



SKELETON-TYPE GUN
UPC: 626939451210

FEATURES

- Quick-twist pressure release. Hex rod.
- Ladder hook at rear end of push rod.
- Aluminum handle. Built-in seal punch under rail.
- Orange steel frame and black handle.

45-146 PREMIUM GUN

9" high-performance caulking gun for use with 300ml tubes.



PREMIUM GUN
UPC: 626939451463

FEATURES

- Smooth Rod. Quick-twist pressure release.
- High quality corrosion-resistant steel.
- Rotative cartridge frame. Spout cutter and pin.

SAUSAGE-TYPE GUN

15" high-performance caulking gun suitable for use with sausage packs and cartridges.



CAULKING GUN
UPC: 626939451524

FEATURES

- Die-cast body with aluminum tube.
- Plastic plunger and application nozzles included.
- Replacement nozzles available.

CONTRACTOR GRADE GUN

These heavy duty professional caulking guns are ideal for quick and efficient high quality finishes.



9" GUN
UPC: 626939451623

FEATURES

- 18:1 thrust ratio for use with acrylic, adhesives, asphalt, butyl and cement.
- 9 mm metallurgy driving dog. Zinc alloy handle.
- Quick-twist pressure release. Revolving barrel.
- Includes ladder hook.

PART #	PRODUCT NAME
45-152	SAUSAGE-TYPE CAULKING GUN
45-153	PLASTIC NOZZLE

PART #	PRODUCT NAME
45-162	9" CONTRACTOR GRADE GUN
45-163	13" CONTRACTOR GRADE GUN

SINGLE OUTLET EXTENSION CORDS

Primegrip hard service extension cords feature a thermoplastic jacket and weather-resistance.



100' 12/3 GAUGE 15A
UPC: 626939242276

FEATURES

- Heavy duty oil and water resistant jacket.
- Lit end indicates when power is on.

PART #	LENGTH	AWG GAUGE	CURRENT
24-205	50'	16/3 GAUGE	13A
24-206	80'	16/3 GAUGE	10A
24-215	50'	14/3 GAUGE	15A
24-217	100'	14/3 GAUGE	13A
24-223	25'	12/3 GAUGE	15A
24-225	50'	12/3 GAUGE	15A
24-227	100'	12/3 GAUGE	15A

TRIPLE OUTLET EXTENSION CORDS

Primegrip hard service extension cords feature a thermoplastic jacket and weather-resistance.



100' 14/3 GAUGE 13A
UPC: 626939242184

FEATURES

- Triple outlet for flexible usage.
- Heavy duty oil and water resistant jacket.
- Lit end indicates when power is on.

PART #	LENGTH	AWG GAUGE	CURRENT
24-219	50'	16/3 GAUGE	13A
24-216	50'	14/3 GAUGE	15A
24-218	100'	14/3 GAUGE	13A
24-200	2'	12/3 GAUGE	15A
24-224	25'	12/3 GAUGE	15A
24-226	50'	12/3 GAUGE	15A

26-124

16'/5M×3/4" MEASURING TAPE

Max strength professional measuring tape.



16'/5M×3/4" MEASURING TAPE
UPC: 626939261246

FEATURES

- Imperial and Metric units.
- Blade lock mechanism.
- Ergonomically designed rubber grip.
- Rubber lanyard for easy carrying.

26-126

25'/7.5M×1" MEASURING TAPE

Max strength professional measuring tape.



25'/7.5M×1" MEASURING TAPE
UPC: 626939261260

FEATURES

- Imperial and Metric units.
- Blade lock mechanism.
- Ergonomically designed rubber grip.
- Rubber lanyard for easy carrying.

26-127

25'×1" MEASURING TAPE

Max strength professional measuring tape.



25'×1" MEASURING TAPE
UPC: 626939261277

FEATURES

- Imperial units only.
- Blade lock mechanism.
- Ergonomically designed rubber grip.
- Rubber lanyard for easy carrying.

26-136

25'/7.5M×1" AUTO LOCK

Professional measuring tape with automatic blade locking and push release button.



25'/7.5M×1" AUTO LOCK
UPC: 626939261369

FEATURES

- Imperial and Metric units.
- Automatic blade lock with release button.

26-137

25'×1" AUTO LOCK

Professional measuring tape with automatic blade locking and push release button.



25'×1" AUTO LOCK
UPC: 626939261376

FEATURES

- Imperial units only.
- Automatic blade lock with release button.

26-139

25'/7.5M×1" QUICK RELEASE

Magnetic marking measuring tape with blade lock mechanism and push release button.



25'/7.5M×1" QUICK RELEASE
UPC: 626939261390

FEATURES

- Imperial and Metric units.
- Blade locking mechanism with release button.
- Rubber lanyard for easy carrying.

26-603

INFRARED THERMOMETER

Compact, rugged and easy to use, this infrared thermometer reads surface temperatures in less than a second. Just aim and push the button to safely measure surface temperatures of hot, hazardous or hard-to-reach objects without contact.



INFRARED THERMOMETER
UPC: 626939266036

FEATURES

- Simple, one-handed operation.
- Laser targeting.
- Backlit LCD display.
- °C and °F toggle.
- Automatic switch off capability.
- Display hold function.

SPECIFICATION	RATING
TEMP RANGE	-50°C — 530°C
ACCURACY	+2% OR 2°C
RESOLUTION	0.1°C
RESPONSE TIME	< 0.8S
EMISSIVITY	0.95 FIXED
DISTANCE TO SPOT RATIO	12:1
SPECTRAL RESPONSE	8 — 14 MM
STORAGE TEMPERATURE	-30°C — 50°C
OPERATING TEMPERATURE	0°C — 50°C

26-614
100' METAL CHALK REEL

100' abrasion-resistant metal chalk reel for marking.



100' METAL CHALK REEL
UPC: 626939266142

FEATURES

- Fast retrieve chalk line reel for 6 times faster line rewind than traditional chalk reels.
- Robust steel handle and large ergonomic clutch for increased durability, strength, and torque.
- Strong metal housing withstands wear and tear.

26-617
2 PIECE CHALKLINE SET

Chalkline set with 100' metal chalk reel and 4 oz standard blue marking chalk.



2 PIECE CHALKLINE SET
UPC: 626939266173

FEATURES

- Fast retrieve chalk line reel for 6 times faster line rewind than traditional chalk reels.
- Robust steel handle and large ergonomic clutch for increased durability, strength, and torque.
- Strong metal housing withstands wear and tear.
- Blue chalk provides high visibility temporary markings for indoor or outdoor use.

PAINT BRUSHES

General purpose paint brushes ideal for small painting projects.



2" BRUSH
UPC: 626939381821

FEATURES

- Polyester filament bristles.
- For use with all paints.
- Wood handle.

PAINT ROLLERS

General purpose paint rollers ideal for standard paint jobs.



9" PAINT ROLLER
UPC: 626939381975



9" PAINT ROLLER CAGE
UPC: 626939381982

FEATURES

- For use on walls, doors and lightly textured wood.
- 10mm pile thickness.
- 5-wire cages are threaded for extension poles.

PART #	PRODUCT NAME
38-182	2" BRUSH
38-183	3" BRUSH
38-184	4" BRUSH

PART #	PRODUCT NAME
38-199	4" PAINT ROLLER
38-194	4" PAINT ROLLER CAGE
38-197	9" PAINT ROLLER
38-198	9" PAINT ROLLER CAGE

38-190

METAL PAINT TRAY

Steel tray for all types of paint jobs.



METAL PAINT TRAY
UPC: 626939381906

FEATURES

- Sturdy, ribbed roll-off area for even roller loading.
- Made of heavy gauge rust-resistant steel.
- Durable welded legs to keep the tray level.

38-196

PAINT ROLLER KIT

This 3 piece paint kit is a convenient starter pack for any painting project.



PAINT ROLLER KIT
UPC: 626939381968

FEATURES

- Includes a plastic tray, roller and cage.
- 9" roller with 10mm pile thickness.
- 5-wire cage is threaded for extension poles.
- Tray has ribbed roll-off area and durable legs.

28-116

DUCT TAPE

An excellent duct insulating tape made of a polyester scrim laminated to a silver polyethylene film and coated with a calendered natural rubber adhesive.



DUCT TAPE
UPC: 626939281169

FEATURES

- 48 mm x 55 m, 7 mil thickness.
- General repair tape for indoor and outdoor uses.
- Good balance between strength, thickness and adhesion.
- Easy to unwind and tearable by hand.
- Conforms well to surfaces and water resistant.

28-314

ALUMINUM FOIL TAPE

This aluminum foil tape is designed to be used in duct insulation. The tape offers good conformability, high holding power and long term performance. UL 723 listed.



ALUMINUM FOIL TAPE
UPC: 626939283149

FEATURES

- 2" x 50 yards, 2.9 mil thickness.
- Designed with special adhesive formulation for cold application with excellent temperature resistance.
- Good reflectivity of heat and light.
- Ideal for join and seal duct work and insulation boards and batts, seaming, sealing and patching of fiberglass duct board, or other foil faced products.
- Listed UL 723 "Test for Surface Burning Characteristics of Building Materials".

SHEATHING TAPE

This tape is made of a UV resistant polypropylene film and coated with high shear, high tack solvent based acrylic adhesive.



SHEATHING TAPE RED—60 MM×55 M
UPC: 626939284146

FEATURES

- 4.1 mil thickness.
- Ideal for sealing joints and seams of insulation.
- High tack adhesive provides aggressive contact.
- Strong and durable holding power.
- Excellent resistance to moisture, UV and weathering.
- Prevents air infiltration.

PART #	PRODUCT NAME
28-413	SHEATHING TAPE WHITE—60MM×60M
28-414	SHEATHING TAPE RED—60MM×55M

28-415

VAPOR BARRIER SHEATHING TAPE

This tape is made of a UV resistant polypropylene film and coated with a specially formulated solvent-based acrylic adhesive.



VAPOR BARRIER SHEATHING TAPE
UPC: 626939284153

FEATURES

- 60mm×60m, 3 mil thickness.
- Ideal for sealing of joints and seams of polyethylene vapor barriers.
- High tack adhesive provides aggressive contact.
- Outstanding adhesion on polyethylene.
- Strong and durable holding power.
- Excellent resistance to moisture, mold and UV.
- Prevents air infiltration.

28-613

CAUTION TAPE

1000' contractor-grade roll of 3" caution tape. Easily covers large areas.



CAUTION TAPE
UPC: 626939286133

FEATURES

- Useful for setting up warnings and zoning off areas.
- Contractor-grade polyurethane is job-site tough and remains pliant in cold weather.
- Bold, black print on a bright yellow background offers excellent visibility to help ensure safety.
- Unleaded pigments and inks for safe handling.

BLUE TARPS

Standard duty blue tarps.



15'x20' BLUE TARP'
UPC: 626939381524

FEATURES

- Rust-resistant aluminum grommets.
- Rope-reinforced hem with strengthened corner bars.
- 8x8 netting.
- Waterproof. Built-in UV protection.
- Flexible and lightweight for easy storage.

PART #	PRODUCT NAME
38-0608	6'x8' BLUE TARP
38-0810	8'x10' BLUE TARP
38-0912	9'x12' BLUE TARP
38-1015	10'x15' BLUE TARP
38-1218	12'x18' BLUE TARP
38-1520	15'x20' BLUE TARP
38-1824	18'x24' BLUE TARP
38-2030	20'x30' BLUE TARP
38-2440	24'x40' BLUE TARP
38-3050	30'x50' BLUE TARP

38-0707 GARBAGE TARP

Roofer's general purpose garbage tarp.



GARBAGE TARP
UPC: 626939380701

FEATURES

- Constructed from heavy duty canvas and high strength vinyl coated mesh.
- Treated for rot, mould/mildew, and water resistant for wet applications.
- Heavy duty stitched hems and seams.
- High strength and UV resistant thread.
- 2" seatbelt webbing reinforcement.
- 1 piece forged D-rings at each corner.



PRODUCT INDEX

02-234	14" ALUMINUM PIPE WRENCH	26	19-014	75 LB HEAVY DUTY ROLLER	32
02-235	18" ALUMINUM PIPE WRENCH	26	19-015	100 LB HEAVY DUTY ROLLER	32
02-236	24" ALUMINUM PIPE WRENCH	26	19-020	EXTENDABLE ROLLER	32
02-332	6" ADJUSTABLE WRENCH	26	19-401	HEAT GUN KIT	30
02-333	8" ADJUSTABLE WRENCH	26	19-404	20 MM STANDARD NOZZLE	31
02-334	10" ADJUSTABLE WRENCH	26	19-405	5 MM STANDARD NOZZLE	31
02-335	12" ADJUSTABLE WRENCH	26	19-406	40 MM STANDARD NOZZLE	31
03-520	FIRST STAGE HAND SEAMER	44	19-407	5 MM SPEED WELDING NOZZLE	31
03-521	FINISHING HAND SEAMER	44	19-408	80 MM STANDARD NOZZLE	31
03-525	3" FORGED HAND SEAMER	45	19-409	20 MM 90° NOZZLE	31
03-526	6" FORGED HAND SEAMER	45	19-410	5 MM ROUND NOZZLE	31
03-527	9" FORGED HAND SEAMER	45	19-411	5 MM×150 MM ROUND NOZZLE	31
03-532	12" FOLDING TOOL	45	19-412	20 MM×150 MM ROUND NOZZLE	31
03-533	18" FOLDING TOOL	45	19-413	NOZZLE WITH ROLLER WELDING TIP	31
03-535	3" HAND SEAMER	45	19-414	ROUND SPEED WELDING NOZZLE	31
03-536	1"×3" HAND SEAMER	46	19-415	TRIANGLE SPEED WELDING NOZZLE	31
03-537	3" CHROME SEAMER	45	19-416	TACKING NOZZLE	31
03-539	1"×6" HAND SEAMER	46	19-417	20 MM 45° NOZZLE	31
03-540	1"×9" HAND SEAMER	46	19-418	40 MM 45° NOZZLE	31
03-541	1"×12" HAND SEAMER	46	19-500	RAPID NOZZLE FOR WALL COVERING	31
03-542	180° CLINCHER	47	19-510	RAPID WELDING NOZZLE	31
03-543	45° CLINCHER	47	19-512	HEAT GUN ELEMENT	31
03-544	90° CLINCHER	47	22-402	2" CORE CUTTER	14
03-546	2"×6" HAND SEAMER	46	22-403	3" CORE CUTTER	14
03-547	3"×6" HAND SEAMER	46	22-880	7/4"×4T HARDIBOARD BLADE	52
04-175	16 OZ CLAW HAMMER	16	22-881	10"×6T HARDIBOARD BLADE	52
04-442	16 OZ SHINGLING HATCHET	17	23-002	PRO SERIES HI-VIS HARNESS S	71
04-443	14 OZ SHINGLING HATCHET	17	23-003	PRO SERIES HI-VIS HARNESS M	71
04-444	20 OZ SHINGLING HATCHET	17	23-004	PRO SERIES HI-VIS HARNESS L	71
04-445	24 OZ SHINGLING HATCHET	17	23-005	PRO SERIES HI-VIS HARNESS XL	71
04-456	16 OZ STEEL SHINGLING HATCHET	16	23-101	5-POINT FULL BODY HARNESS STANDARD	71
04-458	ANTI-VIBRATION SHINGLING HATCHET	16	23-103	5-POINT FULL BODY HARNESS (D-RINGS)	71
04-820	SLATE HAMMER	55	23-105	5-POINT FULL BODY HARNESS (GROMMETS)	71
04-951	6 MM-10 MM HAMMER TACKER	15	23-115	6-POINT CONSTRUCTION HARNESS M-L	72
06-403	6 LB RAILROAD PICK HEAD	27	23-116	6-POINT CONSTRUCTION HARNESS L-XL	72
06-860	HAND SPUDDER	56	23-120	DELUXE HI-VIS HARNESS S	73
06-865	3½" SPUD BAR	27	23-122	DELUXE HI-VIS HARNESS M	73
06-866	7" SPUD BAR	27	23-124	DELUXE HI-VIS HARNESS L	73
06-867	3½" SPUD BAR BLADE	27	23-125	DELUXE HI-VIS HARNESS L LONG	73
06-868	7" SPUD BAR BLADE	27	23-126	DELUXE HI-VIS HARNESS XL	73
09-201	15" UTILITY BAR	24	23-127	DELUXE HI-VIS HARNESS XL LONG	73
09-272	SLATE RIPPER	55	23-129	DELUXE SILVER HARNESS L	74
09-273	SLATE RIPPER & TRIMMER	55	23-130	DELUXE HI-VIS HARNESS S (TOOL BAGS)	73
09-275	STRAIGHT SLATE STAKE	55	23-131	DELUXE SILVER HARNESS S (TOOL BAGS)	74
09-276	CLAWVERINE	23	23-132	DELUXE HI-VIS HARNESS M (TOOL BAGS)	73
09-277	ROOF SNAKE	24	23-133	DELUXE SILVER HARNESS M (TOOL BAGS)	74
18-600	2¼" QUICK CONNECT EXTENSION BIT HOLDER	48	23-134	DELUXE HI-VIS HARNESS L (TOOL BAGS)	73
18-601	3" QUICK CONNECT EXTENSION BIT HOLDER	48	23-135	DELUXE HI-VIS HARNESS L LONG (TOOL BAGS)	73
18-602	6" QUICK CONNECT EXTENSION BIT HOLDER	48	23-136	DELUXE HI-VIS HARNESS XL (TOOL BAGS)	73
18-603	12" QUICK CONNECT EXTENSION BIT HOLDER	48	23-137	DELUXE HI-VIS HARNESS XL LONG (TOOL BAGS)	73
18-604	24" QUICK CONNECT EXTENSION BIT HOLDER	48	23-138	DELUXE SILVER HARNESS L (TOOL BAGS)	74
18-916	6-IN-1 STUBBY SCREWDRIVER	48	23-139	DELUXE SILVER HARNESS L LONG (TOOL BAGS)	74
18-917	7-IN-1 SCREWDRIVER	48	23-141	2-POCKET TOOL POUCH	19
19-012	16 LB HEAVY DUTY ROLLER	32	23-142	3-POCKET TOOL POUCH	19
19-013	35 LB HEAVY DUTY ROLLER	32	23-143	HAMMER HOLDER	20

23-144	ULTRA-VIS DELUXE HARNESS L	75	23-532	BELT-POUCH COMBO	92
23-145	ULTRA-VIS DELUXE HARNESS L LONG	75	23-533	PADDED SUPPORT BELT S	91
23-147	EVOLUTION DELUXE HARNESS S	76	23-534	PADDED SUPPORT BELT M	91
23-148	EVOLUTION DELUXE HARNESS M-L	76	23-535	PADDED SUPPORT BELT L	91
23-149	EVOLUTION DELUXE HARNESS L-XL	76	23-536	PADDED SUPPORT BELT XL	91
23-150	EVOLUTION DELUXE HARNESS XL-XXL	76	23-537	PADDED SUPPORT BELT XXL	91
23-152	TUBULAR SHOCK-ABSORBING LANYARD	77	23-538	HARNESS PAD	92
23-153	EVOLUTION DELUXE HARNESS S (TOOL BAGS)	76	23-541	1 RING SUPPORT BELT S	91
23-154	EVOLUTION DELUXE HARNESS M-L (TOOL BAGS)	76	23-542	1 RING SUPPORT BELT M	91
23-155	EVOLUTION DELUXE HARNESS L-XL (TOOL BAGS)	76	23-543	1 RING SUPPORT BELT L	91
23-156	EVOLUTION DELUXE HARNESS XL-XXL (TOOL BAGS)	76	23-544	1 RING SUPPORT BELT XL	91
23-162	DUAL HOOK SHOCK-ABSORBING LANYARD	77	23-545	2 RING SUPPORT BELT S	91
23-171	3' SHOCK-ABSORBING LANYARD	77	23-546	2 RING SUPPORT BELT M	91
23-172	6' SHOCK-ABSORBING LANYARD	77	23-547	2 RING SUPPORT BELT L	91
23-176	TOOL SAFETY LANYARD	78	23-548	2 RING SUPPORT BELT XL	91
23-201	PRIMEGRIP ADP ROPE GRAB	65	23-561	CSA TYPE 2 HARD HAT WHITE	84
23-202	ROPE GRAB WITH E-4 ABSORBER	65	23-562	CSA TYPE 2 HARD HAT BLUE	84
23-206	ROPE GRAB WITH E-6 ABSORBER	65	23-563	CSA TYPE 2 HARD HAT YELLOW	84
23-254	25' SINGLE HOOK LIFELINE	79	23-564	CSA TYPE 2 HARD HAT RED	84
23-255	30' SINGLE HOOK LIFELINE	79	23-580	DUST MASK BASIC—20 PACK	84
23-257	35' SINGLE HOOK LIFELINE	79	23-581	DUST MASK WITH EXHAUST VALVE—10 PACK	84
23-259	30' X-LINE (CLAMSHELL ROPE GRAB)	80	23-582	EAR BAND	84
23-260	50' X-LINE (CLAMSHELL ROPE GRAB)	80	23-584	LASER LITE EARPLUGS UNCORDED—200 PAIRS	85
23-263	50' SINGLE HOOK LIFELINE	79	23-585	LASER LITE EARPLUGS CORDED—100 PAIRS	85
23-264	100' SINGLE HOOK LIFELINE	79	23-586	MAX EARPLUGS UNCORDED—200 PAIRS	85
23-266	30' X-LINE (PRUSSIC KNOT ROPE GRAB)	80	23-587	MAX EARPLUGS CORDED—100 PAIRS	85
23-267	50' X-LINE (PRUSSIC KNOT ROPE GRAB)	80	23-588	HEARPACK SMARTFIT EARPLUGS	85
23-300	3' CLASS A ROPE LANYARD	78	23-589	LEIGHTNING EARMUFF	85
23-301	6' CLASS A ROPE LANYARD	78	23-602	3'x2" WEBSTRAP SLING	63
23-408	D-MINUS ANCHOR KIT	56	23-607	3' CONCRETE ANCHOR STRAP	63
23-411	SINGLE PLATE LITE-ANCHOR	57	23-608	4' CONCRETE ANCHOR STRAP	63
23-412	DUAL PLATE LITE-ANCHOR	57	23-609	6' CONCRETE ANCHOR STRAP	63
23-413	REUSABLE ANCHOR	56	23-610	6' CONCRETE ANCHOR STRAP (SINGLE D-RING)	63
23-415	SINGLE PLATE HEAVY DUTY ANCHOR	57	23-611	3' PREMIUM CROSS ARM STRAP	63
23-416	DUAL PLATE HEAVY DUTY ANCHOR	57	23-612	4' PREMIUM CROSS ARM STRAP	63
23-417	SINGLE RING RETROFIT ANCHOR	58	23-613	6' PREMIUM CROSS ARM STRAP	63
23-418	DOUBLE RING RETROFIT ANCHOR	58	23-614	6' CONCRETE ANCHOR STRAP (DOUBLE D-RING)	63
23-426	CLAW TYPE 2x4 ANCHOR	58	23-651	SPLIT LEATHER WORK GLOVES	67
23-440	25' FALL PROTECTION KIT	88	23-914	COTTON MASONRY GLOVES	67
23-441	WORK POSITIONING KIT	89	23-923	SPOTTED GRIP GLOVES	68
23-448	10 PIECE ROOFER'S KIT	89	23-927	FULLY SPOTTED GLOVES	68
23-450	50' FALL PROTECTION KIT	88	23-950	GRIP-PRO MEDIUM	68
23-467	COOL BLAZE BURN KIT	89	23-951	GRIP-PRO LARGE	68
23-471	VERTICAL GUARD RAIL POST	70	23-952	GRIP-PRO X-LARGE	68
23-472	PARAPET GUARD RAIL SYSTEM	70	23-953	FREEZEMATE MEDIUM	68
23-473	PARAPET GUARD RAIL BASE	70	23-954	FREEZEMATE LARGE	68
23-500	CLEAR LENS SAFETY GLASSES	83	23-955	FREEZEMATE X-LARGE	68
23-502	BLUE MIRROR LENS SAFETY GLASSES	83	23-956	NIGHT HAWK MEDIUM	69
23-504	SILVER MIRROR LENS SAFETY GLASSES	83	23-957	NIGHT HAWK LARGE	69
23-506	FACE SHIELD AND MOUNT	83	23-958	NIGHT HAWK X-LARGE	69
23-507	FACE SHIELD	83	23-961	XTREME GRIP MEDIUM	69
23-508	FACE SHIELD MOUNT	83	23-962	XTREME GRIP LARGE	69
23-513	SELF-LOCKING CARABINER	66	23-963	XTREME GRIP X-LARGE	69

23-964 PHANTOM MEDIUM	69	23-SA5010 O-RING	67
23-965 PHANTOM LARGE	69	23-SA6015 36" TIE-OFF STRAP	64
23-966 PHANTOM X-LARGE	69	23-SA6025 MAX FORCE E-4 ENERGY ABSORBER	79
23-1032 12" CRA WITH RISER	61	23-SA6040C E-4 ENERGY ABSORBING LANYARD	66
23-1033 18" CRA WITH RISER	61	23-SA6050D 3' VALUE TIE-OFF STRAP	64
23-1033P 18" CRA WITH RISER & PASS THROUGH TOP	61	23-SA6060 TRAUMA SUSPENSION LADDER	75
23-2901K 50' SELF-RETRACTING LIFELINE	80	23-SA6405X 16 GROMMET UTILITY BELT	92
23-2903K 30' SELF-RETRACTING LIFELINE	80	23-SA6415 SAFETY GLASSES HOLDER	21
23-2904K 20' SELF-RETRACTING LIFELINE	80	23-SA6416 VERTICAL MOBILE PHONE HOLDER	22
23-2906K 10' SELF-RETRACTING LIFELINE	80	23-SA6418 PERSONAL EFFECTS HOLDER	22
23-SA1006 ARS 2x8 ANCHOR	59	23-SA6421 ALL-PAKKA JUMBO CARGO BAG	22
23-SA1010 2x4 SAFETY BAR	59	23-SA407630 30' MAX-X SAFETY KIT (PRUSSIC KNOT)	90
23-SA1011 2x6 SAFETY BAR	59	23-SA407650 50' MAX-X SAFETY KIT (PRUSSIC KNOT)	90
23-SA1012 2x4/2x6 COMBINATION BAR	59	23-SA407730 30' MAX-X SAFETY KIT (ADP ROPE GRAB)	90
23-SA1031 CRA BACKING PLATE	60	23-SA407750 50' MAX-X SAFETY KIT (ADP ROPE GRAB)	90
23-SA1034 LADDER LOCK	6	23-SAIV6061 MAX FORCE E-6 ENERGY ABSORBER	79
23-SA1038 D-PLATE CRA	62	24-200 2' 12/3 GAUGE TRIPLE OUTLET EXT CORD	98
23-SA1039 D-PLATE BACKING	62	24-205 50' 16/3 GAUGE SINGLE OUTLET EXT CORD	98
23-SA1050P CRA HORIZONTAL LIFELINE KIT S	81	24-206 80' 16/3 GAUGE SINGLE OUTLET EXT CORD	98
23-SA1051P CRA HORIZONTAL LIFELINE KIT L	81	24-215 50' 14/3 GAUGE SINGLE OUTLET EXT CORD	98
23-SA1053 COUPLER	82	24-216 50' 14/3 GAUGE TRIPLE OUTLET EXT CORD	98
23-SA1055 GALVANIZED WIRE ROPE	82	24-217 100' 14/3 GAUGE SINGLE OUTLET EXT CORD	98
23-SA1058 HORIZONTAL LIFELINE TURNBUCKLE	82	24-218 100' 14/3 GAUGE TRIPLE OUTLET EXT CORD	98
23-SA1059 METALLIC ENERGY ABSORBER	82	24-219 50' 16/3 GAUGE TRIPLE OUTLET EXT CORD	98
23-SA1321 20' HORIZONTAL LIFELINE KIT	90	24-223 25' 12/3 GAUGE SINGLE OUTLET EXT CORD	98
23-SA1322 20' HORIZONTAL LIFELINE KIT WITH CARGO BAG	90	24-224 25' 12/3 GAUGE TRIPLE OUTLET EXT CORD	98
23-SA2000 ABS FLASHING BASE	60	24-225 50' 12/3 GAUGE SINGLE OUTLET EXT CORD	98
23-SA2004 LEAD FLASHING BASE	61	24-226 50' 12/3 GAUGE TRIPLE OUTLET EXT CORD	98
23-SA2008F CRA CAP LEASH	62	24-227 100' 12/3 GAUGE SINGLE OUTLET EXT CORD	98
23-SA2009 HEX HEAD SCREWS—10 PACK	64	25-113 15" RUBBER TIE DOWN	93
23-SA2012 BRIGHT DUPLEX NAILS	64	25-114 21" RUBBER TIE DOWN	93
23-SA2015 2 3/8" DETENT PIN WITH 6" SHOCK TETHER	60	25-116 31" RUBBER TIE DOWN	93
23-SA2016 4 3/8" DETENT PIN WITH 6" SHOCK TETHER	60	25-117 41" RUBBER TIE DOWN	93
23-SA2017 6 3/8" DETENT PIN WITH 6" SHOCK TETHER	60	25-345 1x15" RATCHET—1,000 LB	93
23-SA2022 CRA INSTALLATION SCREW	62	25-346 1x15" RATCHET—1,500 LB	93
23-SA2801 ARS 2x8 ANCHOR KIT	59	25-347 1"x15' CAMO RATCHET—4 PACK	93
23-SA2810 EPDM, STEM COVER & TETHER KIT	59	25-348 1"x15' CAMO—2 RATCHET & 2 CAMBUCKLE	93
23-SA2813 RS-10 ANCHOR	58	25-353 2"x27' CAMO RATCHET	93
23-SA2816 RS-20 ANCHOR	58	25-354 2"x27' RATCHET—BULK PACK	93
23-SA2831 BOLT-ON TYPE TRUSS BAR ANCHOR	60	25-355 2"x27' RATCHET	93
23-SA2832 DETENT PIN TYPE TRUSS BAR ANCHOR	60	25-356 2"x20' RATCHET	93
23-SA3001 MAX SAFETY KIT	90	25-358 1"x15' RATCHET—4 PACK	93
23-SA3002 MAX HARNESS	75	26-124 16'/5Mx3/4" MEASURING TAPE	99
23-SA3006 MAX HINGED ROOF ANCHOR	57	26-126 25'/7.5Mx1" MEASURING TAPE	99
23-SA3007 SINKER NAILS	64	26-127 25'x1" MEASURING TAPE	99
23-SA3013D HINGE-2 ANCHOR	57	26-136 25'/7.5Mx1" AUTO LOCK	99
23-SA4015 SUPER GRAB	65	26-137 25'x1" AUTO LOCK	100
23-SA4015C CLAMSHELL ROPE GRAB	65	26-139 25'/7.5Mx1" QUICK RELEASE	100
23-SA4020 25' VALUE LIFELINE	81	26-603 INFRARED THERMOMETER	100
23-SA4021 50' VALUE LIFELINE	81	26-614 100' METAL CHALK REEL	101
23-SA4023 100' VALUE LIFELINE	81	26-617 2 PIECE CHALKLINE SET	101
23-SA5001 AUTO-LOCK CARABINER	66	28-116 DUCT TAPE	102
23-SA5006Z ALUMINUM AUTO-LOCK CARABINER	66	28-314 ALUMINUM FOIL TAPE	102

28-413	SHEATHING TAPE WHITE—60MMx60M	103	36-259	2-NOTCH SUPER HOOK BLADES—5 PACK	11
28-414	SHEATHING TAPE RED—60MMx55M	103	36-260	2-NOTCH TITANIUM STRAIGHT BLADES—100 PACK	11
28-415	VAPOR BARRIER SHEATHING TAPE	103	36-261	3-NOTCH STRAIGHT BLADES—100 PACK	11
28-613	CAUTION TAPE	103	36-263	2-NOTCH STRAIGHT BLADES—100 PACK	11
30-600	¼" HOSE END	94	36-266	2-NOTCH DEEP HOOK BLADES—100 PACK	11
30-602	¾" HOSE END	94	36-267	2-NOTCH TITANIUM SUPER HOOK BLADES—100 PACK	11
30-640	¼" HOSE MENDERS	94	36-268	2-NOTCH BLUNT HOOK BLADES—100 PACK	11
30-642	¾" HOSE MENDERS	94	36-269	2-NOTCH SUPER HOOK BLADES—100 PACK	11
30-683	FLAT HEX MANIFOLD	94	36-271	3" FELT KNIFE WITH WOODEN HANDLE	13
30-685-4	ALUMINUM MANIFOLD	94	36-273	4" FELT KNIFE WITH WOODEN HANDLE	13
30-715	M-STYLE COUPLER ¼" FEMALE	94	36-274	FIXED BLADE ROOFER'S KNIFE	8
30-716	M-STYLE COUPLER ¼" MALE	94	36-275	2-STAR ANGULAR BLADE	14
30-718	M-STYLE COUPLER ¾" FEMALE	94	36-276	4-STAR ANGULAR BLADE	14
30-719	M-STYLE COUPLER ¾" MALE	94	36-279	BARRACUDA PROFESSIONAL KNIFE	9
30-727	M-STYLE PLUG ¼" MALE	95	36-280	ROOFER'S SHARK KNIFE	9
30-728	M-STYLE PLUG ¼" FEMALE	95	36-288	18 MM SNAP-OFF HOOK BLADES	11
30-732	M-STYLE PLUG ¾" FEMALE	95	36-290	FIXED BLADE SWING TYPE KNIFE	9
30-733	M-STYLE PLUG ¾" MALE	95	36-291	DUAL BLADE ROOFING KNIFE	9
30-746	¼" MALE AMT-STYLE COUPLER	95	36-292	KNUCKLE SAVER ROOFING KNIFE	10
30-775	A-STYLE COUPLER ¼" FEMALE	95	36-301	3" FELT KNIFE WITH DURAGRIP HANDLE	13
30-776	A-STYLE COUPLER ¼" MALE	95	36-302	4" FELT KNIFE WITH DURAGRIP HANDLE	13
30-800	TEFLON TAPE	95	36-303	6" FELT KNIFE WITH DURAGRIP HANDLE	13
31-115	¼" NPTx25' LENGTH LOW TEMP AIR HOSE	96	36-304	8" FELT KNIFE WITH DURAGRIP HANDLE	13
31-116	¼" NPTx50' LENGTH LOW TEMP AIR HOSE	96	36-305	6" FELT KNIFE WITH WOODEN HANDLE	13
31-117	¼" NPTx100' LENGTH LOW TEMP AIR HOSE	96	36-306	8" FELT KNIFE WITH WOODEN HANDLE	13
31-120	¾" NPTx25' LENGTH LOW TEMP AIR HOSE	96	36-317	STRAIGHT CUT AVIATION SNIPS	52
31-121	¾" NPTx50' LENGTH LOW TEMP AIR HOSE	96	36-318	LEFT CUT AVIATION SNIPS	52
31-122	¾" NPTx100' LENGTH LOW TEMP AIR HOSE	96	36-319	RIGHT CUT AVIATION SNIPS	52
31-813	AIR TOOL LUBRICANT	96	36-320	DRILL-OPERATED AVIATION SNIPS	53
31-823	AIR COMPRESSOR OIL	96	36-344	12½" TINSNIPS	53
33-640	SNAP LOCK PUNCH	51	36-352	8" TINSNIPS	53
33-641	HAND NOTCHER	50	36-353	10" TINSNIPS	53
33-643	SNAP LOCK PUNCH—EASY HANDLE	51	36-354	12" TINSNIPS	53
33-700	SHEET METAL CRIMPER	50	36-373	12" ALUMINUM COMPOUND SCISSORS	53
36-101	SIDING REMOVER—CURVED HANDLE	51	36-374	12" ALUMINUM SCISSORS	53
36-102	SIDING REMOVER—STRAIGHT HANDLE	51	36-375	14" ALUMINUM SCISSORS	53
36-199	18 MM KNIFE IN BULK DISPLAY	12	36-384	12" REPLACEMENT BLADE (PAIR)	53
36-200	18 MM KNIFE	12	36-385	14" REPLACEMENT BLADE (PAIR)	53
36-201	18 MM KNIFE WITH RUBBER GRIP	12	36-464	8" STAINLESS STEEL SCISSORS	13
36-202	25 MM KNIFE WITH RUBBER GRIP	12	36-466	10" STAINLESS STEEL SCISSORS	13
36-210	ROOFING AIR KNIFE	8	36-468	12" STAINLESS STEEL SCISSORS	13
36-212	ROOFING AIR KNIFE BLADES—3 PACK	8	36-470	TEFLON-COATED SCISSORS	14
36-213	ROOFING AIR KNIFE BLADE—1 PACK	8	36-480	8" MULTI-PURPOSE SHEARS	54
36-218	18 MM BLADES—10 PACK	12	36-481	8" MULTI-FUNCTION SCISSORS	54
36-219	18 MM BLADES—50 PACK	12	36-482	10" MULTI-PURPOSE OFFSET SHEARS	54
36-220	25 MM BLADES—10 PACK	12	38-182	2" BRUSH	101
36-250	RETRACTABLE UTILITY KNIFE	8	38-183	3" BRUSH	101
36-251	3-NOTCH STRAIGHT BLADES—5 PACK	11	38-184	4" BRUSH	101
36-253	2-NOTCH STRAIGHT BLADES—5 PACK	11	38-190	METAL PAINT TRAY	102
36-254	2-NOTCH TITANIUM STRAIGHT BLADES—5 PACK	11	38-194	4" PAINT ROLLER CAGE	101
36-256	2-NOTCH DEEP HOOK BLADES—5 PACK	11	38-196	PAINT ROLLER KIT	102
36-257	2-NOTCH TITANIUM SUPER HOOK BLADES—5 PACK	11	38-197	9" PAINT ROLLER	101
36-258	2-NOTCH BLUNT HOOK BLADES—5 PACK	11	38-198	9" PAINT ROLLER CAGE	101

38-199	4" PAINT ROLLER	101	46-109	MAXXFLO UNIVERSAL TOOL	29
38-0608	6'x8' BLUE TARP	104	46-203	3" FLEXIBLE COUPLING	30
38-0707	GARBAGE TARP	104	46-204	4" FLEXIBLE COUPLING	30
38-0810	8'x10' BLUE TARP	104	46-206	6" FLEXIBLE COUPLING	30
38-0912	9'x12' BLUE TARP	104	46-207	4"x3" FLEXIBLE COUPLING REDUCER	30
38-1015	10'x15' BLUE TARP	104	46-900	3" TEST PLUG	30
38-1218	12'x18' BLUE TARP	104	46-901	4" TEST PLUG	30
38-1520	15'x20' BLUE TARP	104	69-461	ASH PICK HANDLE	27
38-1824	18'x24' BLUE TARP	104	70-001	CAST ALUMINUM DIPPER	43
38-2030	20'x30' BLUE TARP	104	70-004	GRAVEL PUSHER	43
38-2440	24'x40' BLUE TARP	104	70-105	RIP CART	44
38-3050	30'x50' BLUE TARP	104	71-002	2"x5½" ROUND-EDGED ROOFING TROWEL	37
43-109	KNEE PIT SAVER	87	71-003	2"x7" ROUND-EDGED ROOFING TROWEL	37
43-111	ROOFER'S KNEE PAD STRAP	88	71-005	2"x5" MARGIN TROWEL	37
43-112	ROOFER'S KNEE PADS	86	71-006	ALUMINUM FLOAT	37
43-114	KNEE SAVER KNEE PADS	86	72-000	1"x1" SINGLE FORK SILICONE ROLLER	33
43-115	FOAM RUBBER KNEE PADS	86	72-001	1¼"x1¾" SINGLE FORK SILICONE ROLLER	33
43-118	QUICK GRIP KNEE PADS	87	72-002	2"x4" DOUBLE FORK SILICONE ROLLER	33
43-123	LEATHER KNEE PADS	87	72-010	SEAM PROBE	34
43-132	POLYURETHANE KNEE PADS	87	72-013	FOLDABLE SEAM PROBE	34
43-148	KNEE PAD INSERTS—PAIR	88	72-020	1"x1¼" SINGLE FORK SILICONE ROLLER	33
43-204	10-POCKET LEATHER POUCH	19	72-022	1¾"x1¼" SINGLE FORK SILICONE ROLLER	33
43-206	13-POCKET LEATHER POUCH WITH 2" LEATHER BELT	20	72-026	1"x1¼" DOUBLE HEAD SILICONE ROLLER	33
43-216	HAMMER & KNIFE HOLDER	20	72-028	3½"x1¼" DOUBLE FORK SILICONE ROLLER	33
43-226	13-POCKET SUEDE POUCH WITH 2" LEATHER BELT	20	72-030	2-IN-1 SILICONE/PENNY ROLLER	33
43-300	LEATHER HAMMER HOLDER	21	72-031	2-IN-1 SILICONE ROLLER/SEAM PROBE	33
43-313	KNIFE SHEATHE	21	72-032	2"x2" SINGLE FORK STEEL ROLLER	33
43-314	LEATHER SCISSOR HOLDER	21	72-033	2"x2" DOUBLE FORK STEEL ROLLER	33
43-392	1½" WAIST BELT	20	72-034	2"x2" RADIUS EDGE STEEL ROLLER	33
43-393	2" WAIST BELT	20	72-035	2"x4" DOUBLE FORK STEEL ROLLER	33
45-121	SKELETON-TYPE GUN	97	72-036	ERGONOMIC SILICONE ROLLER	32
45-146	PREMIUM GUN	97	72-045	2"x4" THREADED SILICONE ROLLER	34
45-152	SAUSAGE-TYPE CAULKING GUN	97	72-046	2"x6" THREADED SILICONE ROLLER	34
45-153	PLASTIC NOZZLE	97	72-047	2"x4" THREADED STEEL ROLLER	34
45-162	9" CONTRACTOR GRADE GUN	97	72-048	2"x6" THREADED STEEL ROLLER	34
45-163	13" CONTRACTOR GRADE GUN	97	72-049	STEEL CAMEL ROLLER	34
45-165	ALUMINUM FOAM GUN	54	72-100	PIN ADAPTER	36
45-522	8"x8" CHIMNEY CAP	7	72-101	MOP STEEL BELL ADAPTER	36
45-523	8"x12" CHIMNEY CAP	7	72-102	MOP COMPRESSION HEAD ADAPTER	36
45-526	12"x12" CHIMNEY CAP	7	72-103	MOP HEAD WIRE CLIP	36
46-003	3" DRAIN SEAL	28	72-105	24" MOP YARN	35
46-004	4" DRAIN SEAL	28	72-106	30" MOP YARN	35
46-005	5" DRAIN SEAL	28	72-107	MOP BELL HEAD	36
46-006	6" DRAIN SEAL	28	72-110	ASPHALT SKIMMER	43
46-007	MAXXFLO 3" DRAIN SEAL	29	72-120	24" NEOPRENE APPLICATOR SERRATED SQUEEGEE	35
46-008	MAXXFLO 4" DRAIN SEAL	29	72-121	30" NEOPRENE APPLICATOR SERRATED SQUEEGEE	35
46-009	MAXXFLO 5" DRAIN SEAL	29	72-122	36" NEOPRENE APPLICATOR SERRATED SQUEEGEE	35
46-010	MAXXFLO 6" DRAIN SEAL	29	72-123	24" SAHARA SERRATED SQUEEGEE	35
46-100	DRAIN SEAL SCREWDRIVER	28	72-124	18" SAHARA FLAT SQUEEGEE	35
46-101	MAXXFLO 3" DRAIN SEAL TOOL	29	72-125	24" SAHARA FLAT SQUEEGEE	35
46-102	MAXXFLO 4" DRAIN SEAL TOOL	29	72-200	PIGTAIL HOOK	43
46-103	MAXXFLO 6" DRAIN SEAL TOOL	29	72-202	12" GINWHEEL WITH HOOK	43
46-104	MAXXFLO 5" DRAIN SEAL TOOL	29	72-204	ROLL PULLER	37

72-206	ALUMINUM ROLL PULLER	37	88-301	60 MM TITANIUM TORCH HEAD	40
72-207	EXTENDABLE ALUMINUM ROLL PULLER	37	88-302	70 MM TITANIUM TORCH HEAD	40
73-218	18" MAGNET BROOM	19	88-402	STAINLESS STEEL TORCH HOLDER	41
73-222	20" SURE-PICK MAGNET BROOM	18	88-413	SINGLE FLINT SPARK LIGHTER	40
73-223	24" SURE-PICK MAGNET BROOM	18	88-415	25' PROPANE HOSE	41
73-244	16" MAGNET SWEEPER	19	88-416	50' PROPANE HOSE	41
73-255	MAGNET BROOM WITH U-HANDLE	18	88-417	100' PROPANE HOSE	41
73-320	SLATE ROOFING BRACKET	56	88-500	QUICK CONNECT COUPLER SET	41
73-321	2"×6" ROOFING BRACKET—45°	4	88-672	220G DIAMOND SOLDERING TIP	50
73-322	2"×6" ROOFING BRACKET—60°	4	88-679	315G STANDARD SOLDERING TIP	50
73-325	2"×10" ROOFING BRACKET—45°	4	88-778	220G TURBO SOLDERING TIP	50
73-326	2"×10" ROOFING BRACKET—60°	4	88-900	FIRE DRAGON TORCH KIT	42
73-334	2"×6" ROOFING BRACKET—90°	4	88-902	ULTRA-LITE TITANIUM TORCH KIT	42
73-335	ADJUSTABLE ROOF BRACKET	5	AR-50CT	CELTILE STAPLES—1250 PACK	15
73-338	LADDER HOOK WITH WHEEL	5	AR-504	¼"—1250 PACK	15
73-340	SHINGLE CUTTER	12	AR-504IP	¼"—5000 PACK	15
73-341	ALUMINUM SHINGLE CUTTER	12	AR-505	5/16"—1250 PACK	15
73-343	LADDER STABILIZER STRAPS	5	AR-505IP	5/16"—5000 PACK	15
73-400	SHORT BODY LADDER JACK	6	AR-506	3/8"—1250 PACK	15
73-403	SAFE-T LADDER EXTENSION SYSTEM	7	AR-506IP	3/8"—5000 PACK	15
73-405	LADDER RUNG STEP	6	AR-508	½"—1250 PACK	15
83-300	PRIME RIPPER ROOFING SHOVEL	25	AR-508IP	½"—5000 PACK	15
83-301	PRIME RIPPER WITH 48" HANDLE	25	AR-509	9/16"—1250 PACK	15
83-302	PRIME RIPPER WITH 24" HANDLE	25	AR-HT50P	ARROW HAMMER TACKER	15
83-321	24" MINI SHINGLE POPPER	24	E3-16S	16 OZ RIPPING HAMMER	16
83-326	ROOF RUNNER	24	E3-20S	20 OZ RIPPING HAMMER	16
83-329	48" SHINGLE POPPER	24	E3-CA	REPLACEABLE BLADE HATCHET	17
83-330	36" SHINGLE POPPER WITH D-HANDLE	24	E3-LS	MILLED FACE LIGHTWEIGHT SHINGLING HATCHET	17
83-333	HEAVY DUTY ROOFER'S SHOVEL	26	E3-S	MILLED FACE SHINGLING HATCHET	17
83-337	HEAVY DUTY PITCH FORK	26	GE-50T	50 MM EXPRESS TITANIUM TORCH HEAD	40
88-100	TORCH HANDLE	38	GE-100T	60 MM EXPRESS TITANIUM TORCH HEAD	40
88-105	ANTI-EXPLOSION REGULATOR	38	GE-150T	70 MM EXPRESS TITANIUM TORCH HEAD	40
88-106	ADJUSTABLE REGULATOR	38	GE-364	HOSELESS SOLDERING IRON	49
88-107	5" TORCH WAND	39	GE-367/8US	AUTO IGNITION SOLDERING IRON—235G TIP	49
88-108	15" TORCH WAND	39	GE-367/9US	AUTO IGNITION SOLDERING IRON—315G TIP	49
88-109	24" TORCH WAND	39	GE-620/US	BI-MATERIAL HANDLE	38
88-120	35 MM STAINLESS TORCH HEAD	40	GE-640/US	METAL HANDLE	38
88-121	45 MM STAINLESS TORCH HEAD	40	GE-6364	HOSELESS SOLDERING IRON KIT	49
88-122	55 MM STAINLESS TORCH HEAD	40	PT-SA903B	SIDING GAUGE—PAIR	51
88-123	65 MM STAINLESS TORCH HEAD	40	PT-SA904	GABLE SCRIBE	51
88-125	5" HYBRID TORCH WAND	39	PT-SS404	FIBER CEMENT SIDING SHEAR	52
88-126	15" HYBRID TORCH WAND	39			
88-127	24" HYBRID TORCH WAND	39			
88-128	20" HYBRID TORCH WAND	39			
88-130	130 MM E-TYPE TORCH WAND	39			
88-131	400 MM E-TYPE TORCH WAND	39			
88-132	600 MM E-TYPE TORCH WAND	39			
88-133	5" S-TYPE TORCH WAND	39			
88-134	15" S-TYPE TORCH WAND	39			
88-135	24" S-TYPE TORCH WAND	39			
88-220	TITANIUM DETAIL TORCH KIT	42			
88-221	TITANIUM FIELD TORCH KIT	42			
88-300	50 MM TITANIUM TORCH HEAD	40			

NOTES



A DIVISION OF PRIMELINE TOOLS INC.

3170 Orlando Dr. Unit 1
Mississauga, ON Canada
L4V 1R5

T: 905.671.4788

F: 905.672.5499

info@primelinetools.com

PRIMELINETOOLS.COM

